



Manufacturer and Supplier of
Restaurant Equipment
 and **Display Cases**
 for the Food Service Industry



MODEL: SC-48-LB

PRODUCT FEATURES

Work top/Undercounter cooler

Stainless Steel front

1 1/2 pull out Stainless Steel doors

Self-contained

Heavy duty stainless steel top

Interior lighting

Holds 33°-41°F temperatures

Compressor can be serviced easily

Environmentally friendly 134A refrigerant

1/4 HP, 115V, 7.5 Amps

CUSTOM SIZES AVAILABLE

Casters

5" Casters Optional

Warranty

1 yr Parts & Compressor

Front Door

Stainless Steel

Front Motor Cover

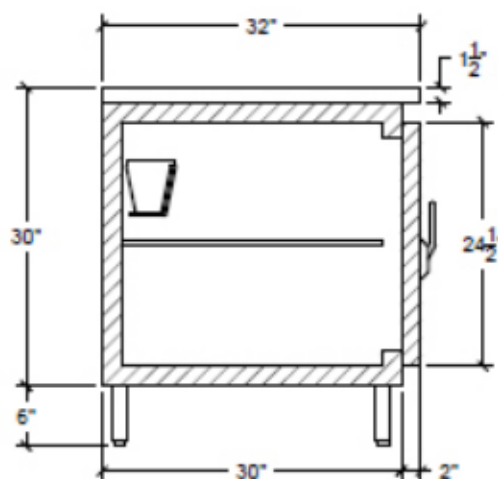
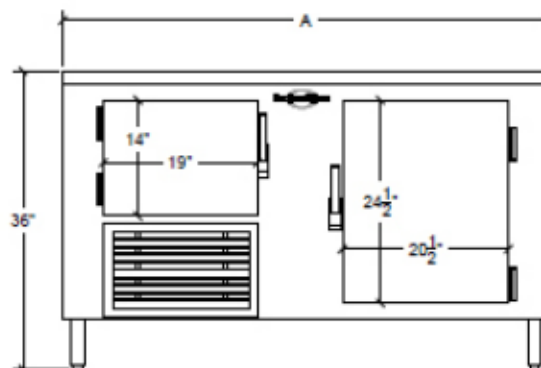
Anodized Aluminum

Interior Walls

Stainless Steel

Outside Back

Galvanized



Product Specifications

Dimensions	Doors	Shelves	Cooling Cycle	Refrigerant	HP	Power	Ampr.	BTU	Freon (oz)
48" x 32" x 36"	1 1/2	1	33-41	134a	1/3	115/60/1	7.5	900	11.5

Additional Models

Model #	Doors	Shelves	Cooling Cycle	Refrigerant	HP	Power	Ampr.	BTU	Freon (oz)
SC-27-LB	1	1	33-41	134a	1/4	115/60/1	8	850	10
SC-60-LB	1 1/2	1	33-41	134a	1/3	115/60/1	8.5	900	11.5
SC-72-LB	2 1/2	2	33-41	134a	1/3	115/60/1	9	1150	11.5

* Model number designates product length. Due to product improvement, we reserve the right to change specifications without notice.

Kitchenall 917-525-2066 www.kitchenall.com support@kitchenall.com