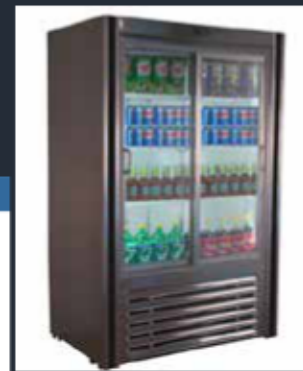




Manufacturer and Supplier of  
**Restaurant Equipment**  
 and **Display Cases**  
 for the Food Service Industry

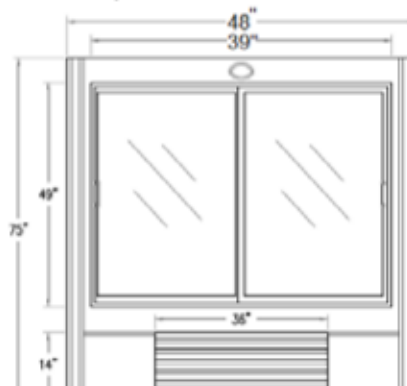
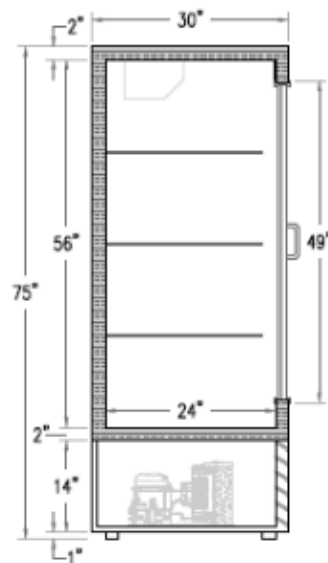


# MODEL: RW-48-SC

## PRODUCT FEATURES

Self-Contained  
 Stainless Steel front  
 White vinyl coated aluminum interior  
 (2) Glass Sliding doors  
 Florescent interior lighting  
 Holds 33°-41°F temperatures  
 Adjustable vinyl coated wire shelves  
 Compressor can be serviced easily  
 Environmentally friendly 134A refrigerant  
 1/3 HP, 115V, 9.2 Amps

Casters	5" Casters Optional
Warranty	1 yr Parts & Compressor
Front Door	Glass
Front Motor Cover	Anodized Aluminum
Interior Walls	White Aluminum
Outside Back	Galvanized



### Product Specifications

Dimensions	Doors	Shelves	Cooling Cycle	Refrigerant	HP	Power	Ampr.	BTU	Freon (oz)
48" X 30" X 75"	2	6	33-41	134a	1/3	115/60/1	13.5	1400	11.5

### Additional Models

Model #	Doors	Shelves	Cooling Cycle	Refrigerant	HP	Power	Ampr.	BTU	Freon (oz)
RW-38-SC	2	3	33-41	134a	1/3	115/60/1	12.5	1200	11.5
RW-54-SC	2	6	33-41	134a	1/3	115/60/1	13.5	1400	11.5
RW-73-SC	2	6	33-41	134a	1/2	115/60/1	15.5	1700	15
RW-96-SC	4	12	33-41	134a	1/2	115/60/1	18.5	2300	15

\* Model number designates product length. Due to product improvement, we reserve the right to change specifications without notice.