

REFRIGERATOR MANUFACTURER
Turbo air
 more durable, efficient, beautiful

4184 E. Conant St.
 Long Beach, CA 90808
 Tel. 310-900-1000
 Fax. 310-900-1077
www.turboairinc.com

Project:	
Model #:	
Item #:	
Available W/H:	Qty:
Approval:	
AIA #:	SIS #:
CSI Section 11400	

Solid Door Heated Cabinet - Universal Tray Slide

Reach-In
 M3 Series

Model : M3H47-2-TS

FEATURES & BENEFITS

- **Digital temperature control & monitor system**

 - Keeps food products safe by maintaining constant temperatures
 - Alarm beeps when doors are not sealed
 - Digital display allows for easy monitoring
- **Ducted fan air distribution system**

Maintains temperature within the food zone
- **On/Off switch**

ON/OFF switch is located on control panel
- **Stainless steel cabinet construction**

The Turbo Air M3 heated cabinet model boasts a stainless steel exterior (galvanized steel top, bottom and back) and interior. It guarantees the utmost in cleanliness and long product life. Sharp corners and edges have been rounded to reduce the risk of injury. The M3 adds a touch of style to the most refined setting.
- **LED interior lighting**
- **High-density polyurethane insulation**

The entire cabinet structure and solid doors are foamed-in-place using high density, CFC free polyurethane insulation.
- **Stainless steel universal tray slides standard**

Each tray slide accommodates up to one (1) 6" deep full size pan or one (1) 18" x 26" size pan or two (2) 14" x 18" size pans or three (3) 12" x 20" size pans.
- **Heated cabinet holds 140°F ~ 180°F for the best in food preservation**




Model	Swing Doors	CU./FT.	#of Tray slides (pairs)	Wattage (W)	AMPS	Crated Weight (lbs.)	L x D x H [†] (inches)
M3H47-2-TS	2	42.9	10	1550	13.5	345	51³/₄ x 30³/₄ x 78

Solid Door Heated Cabinet - Universal Tray Slide

Reach-In
M3 Series

Model : M3H47-2-TS

ELECTRICAL DATA	
Voltage	115/60/1
Plug Type	 NEMA 5-15P
Full Load Amperes	13.5
Wattage (W)	1550
Cord Length (ft.)	8
DIMENSIONAL DATA	
# of Doors	2
Net Capacity (cu. ft.)	42.9
Ext. Length Overall (in.)	51 ³ / ₄ (1314mm)
Ext. Depth Overall (in.)	30 ³ / ₄ (780mm)
Ext. Height Overall (in.)†	78 (1981mm)
Int. Length Overall (in.)	45 ¹ / ₄ (1151mm)
Int. Depth Overall (in.)	25 ¹ / ₈ (639mm)
Int. Height Overall (in.)	58 ³ / ₄ (1493mm)
# of Tray slides (pairs)	10
Net Weight (lbs.)	282
Gross Weight (lbs.)	345

Design and specifications subject to change without notice.

Actual shipping weight may differ due to extra packing materials for product protection.

† Height does not include 5" for caster height.

■ WARRANTY : 3 Year Parts and Labor Warranty

■ STANDARD FEATURES

- Door locks
- 4" dia. swivel casters with locks on the front set
- Easy replaceable one piece magnetic door gaskets
- Solid and sturdy grille design

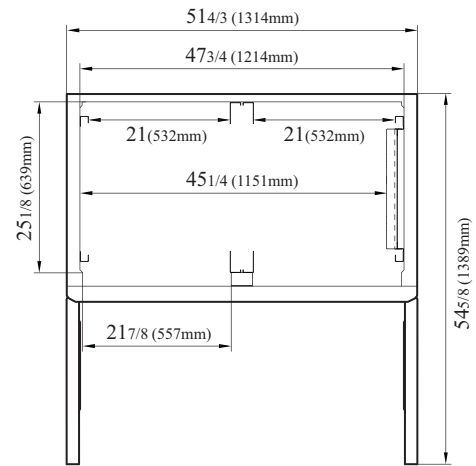
** Lead time applies. Please contact your sales representative for more details to order.

■ OPTIONAL ACCESSORIES

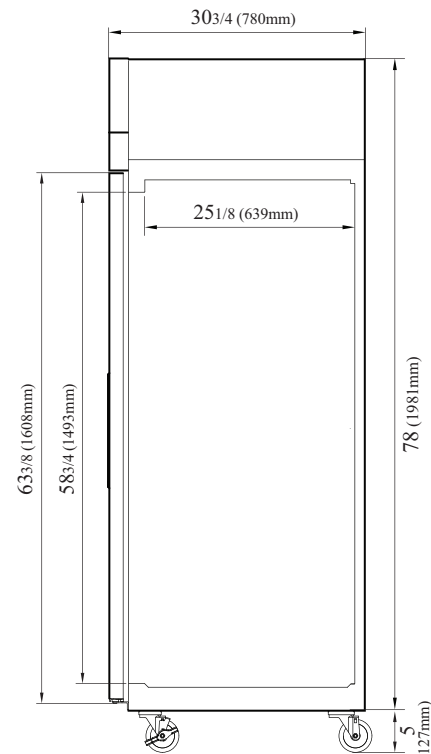
- 5" caster, 1/2" diameter & 13 TPI:
M726500100 (non-brake), M726500200 (w/ brake)
- 6" stainless steel leg: 30221M0600
- Additional universal tray slides (1 pair): T24H139080

PLAN VIEW

(unit : inch)



TOP VIEW



SIDE VIEW

Ver.20220126



- Turbo Air : 800-627-0032
- GK : 800-500-3519
- Warranty : 800-381-7770
- AC : 888-900-1002

REFRIGERATOR MANUFACTURER
Turbo air

GERMAN
KNIFE

||| **RADIANCE**

REFRIGERATION SYSTEM
Turbo air

TEXAKING

Continued product development may necessitate specification changes without notice.