

Insulated Self-Contained Kettle

Electric, 2/3 Jacketed Insulated for Safety™ Deep Drawn Construction Stationary, Floor Mounted Made in USA

THERMA KETTLE
Model
TT-TK2/3J-S-HWE

Standard Features



TT-TK2/3J-S-HWE40QT

- ◆ Kettle System
 - ◇ Seamless deep-drawn 304 kettle liner with a integrally formed radius lip
 - ◇ 304 stainless draw-off tube and welds
 - ◇ 304 stainless 2" compression draw-off
- ◆ 304L stainless kettle jacket
- ◆ Kettle protection system
 - ◇ Thermostat temperature control, 150°F - 260°F
 - ◇ Pressure relief valve
 - ◇ Air eliminator valve
 - ◇ Pressure gauge
 - ◇ Jacket-water fill
 - ◇ Automatic low water cut off and indicator light
 - ◇ Field replaceable heating elements
- ◆ Full body insulation between kettle jacket and outer casing
- ◆ 304 stainless outer casing seam welded to radius lip
- ◆ 304 stainless, seam welded control console
- ◆ 304 stainless, one piece, domed cover, actuator-assisted on 40 - 125 gallon
- ◆ Perforated disc strainer, 1/4" holes
- ◆ Adjustable bullet feet

Legion equipment is built to comply with applicable standards for manufacturers. Approval agencies may include ASME, NSF, UL, ETL, AGA, CSA, CGA and others. Legion reserves the right of design improvement or modification as warranted.

Models and Capacities

Optional Features and Accessories

See price list for supplemental information regarding options

TT-TK2/3J-S-HWE20QT 20 gal. (76 l.)

TT-TK2/3J-S-HWE30QT 30 gal. (114 l.)

TT-TK2/3J-S-HWE40QT 40 gal. (151 l.)

Faucet Options:

- _ Single or dual faucet with bracket & 12" or 18" swing nozzle
- _ 48" flexible spray hose assembly (vinyl or stainless) for dual or single faucet
- _ Faucet bracket
- _ Automatic water filling meter

(Call for information regarding additional faucet options)

Prison/Security Options:

- _ Fasteners (screws & nuts)
- _ Nut driver tool
- _ Draw-off nut driver tool
- _ Screw driver tool
- _ Lockable control cover
- _ Lockable lid
- _ Draw-off protection

Feet:

- _ Adjustable flanged feet

Other Options:

- _ Electric timer with buzzer
- _ Pressure switch
- _ Mixer/agitator, 2 speed

Accessories:

- _ Draw-off drain hose
- _ Measuring strip
- _ Disc strainer; solid or perforated, 1/8" or 1/4"
- _ Care kit

Covers:

- _ Lift-off or 2 piece hinged
- _ 1 piece actuator-assisted, 20 - 30 gal.

Baskets:

- _ Single basket, 20 - 40 gal.
- _ Tri-basket insert
- _ Nylon bag insert with spreader ring

Select draw-off valve: _2" _3"

With: _compression _ball type fitting
See price list for other draw-off options.

Select Voltage: _208V _240V _380V
_415V _440V _480V

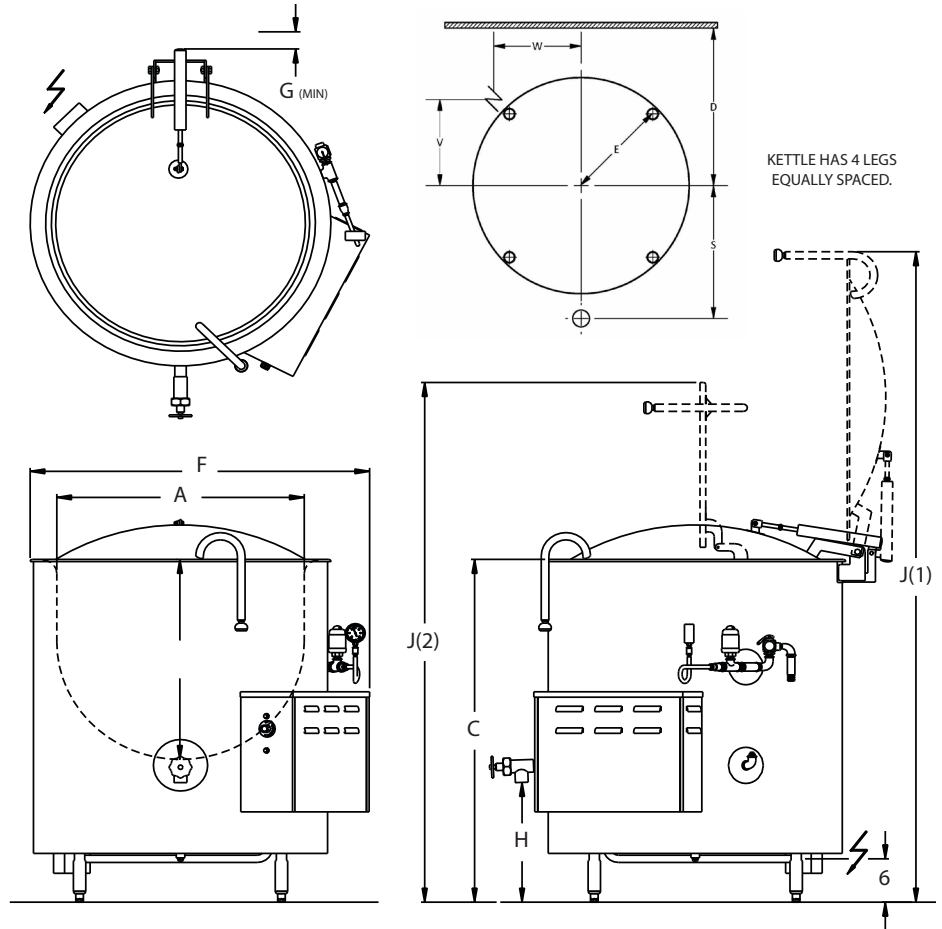
Revision 7719

THERMA KETTLE
Model
TT-TK2/3J-S-HWE

Electric, 2/3 Jacketed Insulated
for Safety Deep Drawn
Construction Stationary, Floor
Mounted Made in USA

Insulated Self-Contained Kettle

MODEL LEC/HEC DIMENSIONS			
Gal	20	30	60
A	22.0	23.0	29.5
B	16.0	20.3	25.0
C	32.4	37.6	44.0
D	22.0	22.6	26.1
E	13.5	13.9	17.3
F	34.0	35.0	41.4
G	4.0	4.0	4.0
H	12.9	14.3	15.4
J(1)	64.3	70.4	83.0
J(2)	49.5	55.8	66.1
S	16.5	17.0	20.3
V	11.5	11.9	14.3
W	11.5	11.9	14.3



Model HEC Electrical Specifications (Amperes per Leg)													
Gal	KW	208 Volt		240 Volt		380 Volt		415 Volt		440 Volt		480 Volt	
		1ø	3ø	1ø	3ø	1ø	3ø	1ø	3ø	1ø	3ø	1ø	3ø
20	12	57.7	33.3	50.0	28.9	31.6	18.2	28.9	16.7	27.3	15.7	25.0	14.4
30	24	115.4	66.6	100.0	57.7	63.2	36.5	57.8	33.4	54.5	31.5	50.0	28.9
40	24	115.4	66.6	100.0	57.7	63.2	36.5	57.8	33.4	54.5	31.5	50.0	28.9