



STAR® Belgian Waffle Baker

Model Description

☐ SWBB

PRODUCT IMAGE



Model SWBB

SPECIFICATIONS

Construction - Front, top, sides and drip tray are fabricated with heavy duty stainless steel for durability, ease-of cleaning and long life. Nickel-plated, open-coil handles minimize heat transfer for user safety. Powered by a cord set that is 4 Feet in length.

Controls & Heating – Operator-controlled, programmable digital timers and temperature-controls allow the operators to precisely establish the perfect bake times and temperatures for any unique waffle batter. The timers are adjustable from 1 second to 10 minutes while temperatures are adjustable from 250°F - 425°F (121°C - 218°C). Unit has a manually adjusted push button control with digital display. Temperature display icon indicates the exact real time temperature of the baking grids for: temperature-ready start times while an audible electric alarm beeps when the baking cycle is complete. Features also include lighted ON/OFF rocker switch.

Baking Grids & Hinges – 7 Inch diameter (178mm) energy efficient cast aluminum grids provide faster bake times and use less energy than hard-to-clean cast iron grids.

DESCRIPTION

STAR new improved Belgian Waffle Baker provides versatility, is easy-to-use and bakes the perfect waffle time after time. Its rotating feature allows the batter to evenly fill the grids. Operator adjustable, programmable, solid-state temperature and timer controls with digital display provide precise temperatures and perfect bake times for any waffle mix recipe.

FEATURES

- Single Belgian waffle baker
- 120V OR 208/240V with 4 Feet cords & their plugs
- Operator controlled programmable digital timer and temperature controls
- Elements are cast into the upper and lower grids to provide superior temperature uniformity.
- New digital display illuminates time and temperature settings, eliminating guesswork and may be set in F° or C°
- Handle is nickel-plated steel with an open-coil design and heat-resistant coating.
- Real Time temperature display icon
- Lighted ON/OFF indicator light with rocker switch
- Audible end of bake cycle alarm
- Stainless steel top, front, sides and drip trays
- 7 Inch (178 mm) diameter energy efficient cast aluminum grids, 1/2" deep
- Durable stainless steel hinge with heavy-duty bearing.

ACCESSORIES / OPTIONS

- Replacement drip tray (part # 21107)

PRODUCT WARRANTY

- ONE YEAR part and ONE YEAR labor warranty

CERTIFICATIONS

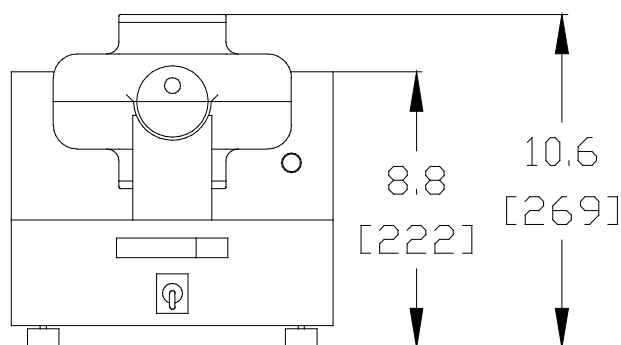
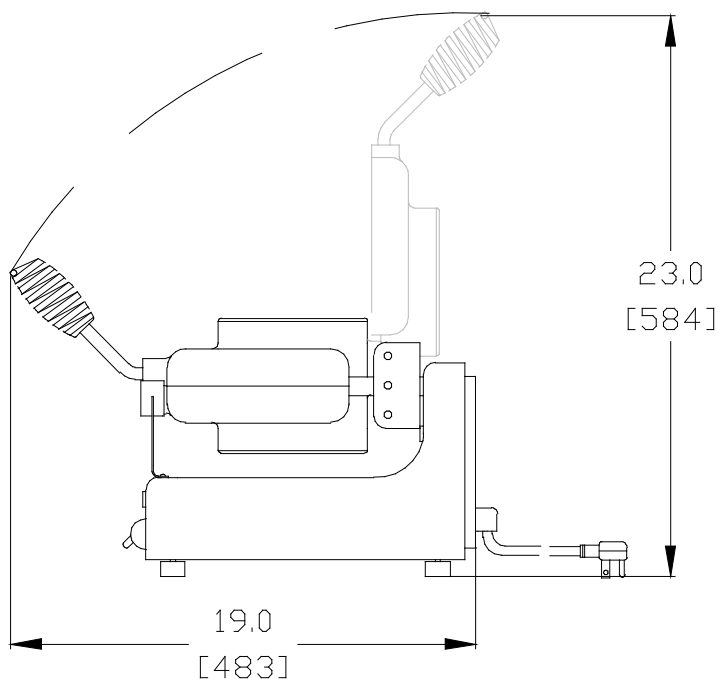
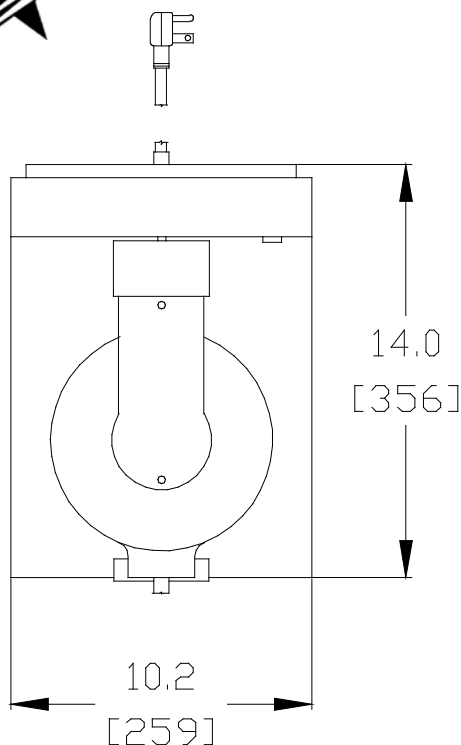




STAR® Belgian Waffle Baker

Model Description

□ SWBB



5-15P 6-15P
 120V 208/240V
 PLUG TYPE PLUG TYPE

MODEL	DESCRIPTION	HEIGHT (mm) CLOSED	WIDTH (mm)	DEPTH (mm) (not to include handles)	VOLTS	WATTS	AMPS	NEMA PLUG	APPROX SHIP WEIGHT LBS. (kg.)	APPROX WEIGHT INSTALLED LBS. (kg.)
SWBB	SINGLE BELGIAN WAFFLE BAKER	10.6 (269)	10.2 (259)	14 (356)	120	900	7.5	5-15P	30.2 (13.4)	29 (13.2)
					208/240	676/900	3.3/3.8	6-15P		
					220/240	900	3.8	CE VII 436U		
					230			NO CORD		

Due to periodic changes in designs, methods, procedures, policies and regulations, the specifications contained in this sheet are subject to change without notice. While STAR MANUFACTURING exercises good faith efforts to provide information that is accurate, we are not responsible for errors or omissions in information provided or conclusions reached as a result of using the specifications. By using the information provided, the user assumes all risks in connection with such use.



Star Manufacturing – 10 Sunnen Drive - P.O. Box 430129 - St. Louis, MO 63143

Phone: (800) 264-7827 – FAX: (314) 781-5445 – www.star-mfg.com

2M-Z21107_REV-