

SPACEMAN USA

COMMERCIAL ICE CREAM & FROZEN BEVERAGE EQUIPMENT

PARTS LIST



MODEL SM-6795H

FROZEN BEVERAGE - FLOOR STANDING - TWO FLAVOR

Customer Service

Sunday – Saturday
8 AM – 5 PM Mountain

Toll-Free: +1 (888) 610-5520
Local: +1 (720) 328-1020

service@spacemanusa.com

Spaceman USA, LLC

226 Commerce Street
Suite B
Broomfield, CO 80020

Sales and Product Information

Monday – Friday
8 AM – 5 PM Mountain

Toll-Free: +1 (888) 610-5520
Local: +1 (720) 328-1020

sales@spacemanusa.com
info@spacemanusa.com

TROUBLESHOOTING

PROBLEM: PRODUCT IS TOO FIRM

Probable Cause

1. Inadequate mix in hopper
2. Improper mixing of product
3. Torque arm is not installed correctly
4. Viscosity adjustment is set incorrectly

Remedy

1. Ensure hopper is at least half full
2. Follow manufacturer instructions for mixing product; ensure correct mix ratios
3. Install torque arm on dispensing door
4. Lower viscosity setting as required (Page 17)

PROBLEM: PRODUCT IS TOO SOFT

Probable Cause

1. Improper mixing of product
2. Missing, damaged, or incorrectly installed beater blades
3. Viscosity adjustment is set incorrectly
4. Beater is rotating counter-clockwise

Remedy

1. Follow manufacturer instructions for mixing product; ensure correct mix ratios
2. Inspect beater blades for damage and correct installation
3. Increase viscosity setting as required (Page 17)
4. Call Spaceman USA Technical Support

PROBLEM: MACHINE WON'T OPERATE IN

Probable Cause

1. Machine is unplugged
2. Tripped circuit breaker or blown fuse
3. Machine has tripped safety reset

Remedy

1. Verify machine is plugged into power source
2. Verify and reset circuit breaker and/or fuse
3. Reset machine (Page 16)

PROBLEM: COMPRESSOR DOESN'T WORK

Probable Cause

1. Machine has tripped safety reset due to motor overload

Remedy

1. Reset machine (Page 16)

PROBLEM: DRIVE SHAFT WON'T REMOVE

Probable Cause

1. Lubrication on square ends of drive shaft
2. Scoring due to lack of lubrication

Remedy

1. Do NOT lubricate the square end of the drive shaft; contact Spaceman USA Technical Support for instructions on removing and inspecting drive shaft and gear box for damage
2. Replace Drive Shaft, use additional lubrication

PROBLEM: PRODUCT WON'T DISPENSE

Probable Cause

1. Product is over-frozen in cylinder
2. Inadequate mix in hopper
3. Power switch is in the OFF position
4. Unit is unplugged
5. Tripped circuit breaker or blown fuse
6. Improper mixing of product
7. Machine has tripped safety reset
8. Beater assembly is rotating counter-clockwise or is not rotating

Remedy

1. Lower viscosity setting as required (Page 17)
2. Ensure hopper is at least half full
3. Turn power switch to FREEZE
4. Verify machine is plugged into power source
5. Verify and reset circuit breaker and/or fuse
6. Follow manufacturer instructions for mixing product; ensure correct mix ratios

PROBLEM: SCORED CYLINDER WALLS

Probable Cause

1. Broken torque or beater assembly
2. Beater guide worn or missing

Remedy

1. Repair or replace torque or beater assembly
2. Replace or install beater guide

PROBLEM: PRODUCT LEAKS EXCESSIVELY

Probable Cause

1. Improper or inadequate lubrication of drive shaft gasket
2. Damaged, missing, or improperly installed drive shaft gasket

Remedy

1. Use sufficient food-grade lubricant, and add sufficient lubricant inside drive shaft gasket during assembly (Page 11)
2. Replace drive shaft gasket every 1 to 3

PROBLEM: PRODUCT LEAKS EXCESSIVELY

Probable Cause

1. Improper or inadequate lubrication of draw valve and draw valve O-rings.
2. Cracked, broken, or worn draw valve O-rings

Remedy

1. Use sufficient food-grade lubricant when assembling draw valve (Page 12)

PROBLEM: MACHINE SHUTS DOWN

Probable Cause

1. Cylinders are experiencing freeze-up (usually due to viscosity being set too high for selected product)

Remedy

1. Reset machine (Page 16), and lower viscosity as

MACHINE SPECIFICATIONS

SM-6795H

FROZEN BEVERAGE FREEZER

PRODUCT INFORMATION

Type	Floor Standing
Flavors	2
Cooling	Air Cooled
Freezing Cylinders	2x 6.9 L / 7.3 qt
Product Mix Hoppers	2x 15.0 L / 15.9 qt
Output (8oz Servings)	116 qt / hr 465 servings / hour
Motor	2x 0.80 HP, 600W
Compressor (Main)	2x 8000 BTU, R404A
Compressor (Auxilliary)	1x 480 BTU, R134A

FEATURES

Machine Controls	Dual, Analog
Refrigerated Hopper	Yes
Hopper Agitator	Yes
Temperature Display	No
Standby Mode	Yes
Low Mix Indicator Light	Yes
Low Mix Indicator Alarm	Yes
Low Temperature Protection	No
Motor Amperage Protection	Yes, Mechanical
High Pressure Protection	Yes
Thermal Overload Protection	Yes



DESCRIPTION

A high capacity dual flavor floor standing frozen beverage freezer. Designed to produce a variety of frozen beverages including: Margaritas, Daiquiris, Fruit Juices, Slushies, etc. Independent automated analog control systems automatically regulate and maintain consistent product quality in each cylinder. Refrigerated hopper allows product to stay fresh, and is approved for use with dairy products.

CUSTOM OPTIONS

Air Chute, Light Box, Spinner (1 or 2), Dual Plug

ELECTRICAL SPECIFICATIONS

	Maximum Fuse Size	Min. Circuit Ampacity	Poles (P) Wires (W)
208-230/60/1	1 x 30A	1 x 24A	2P / 3W

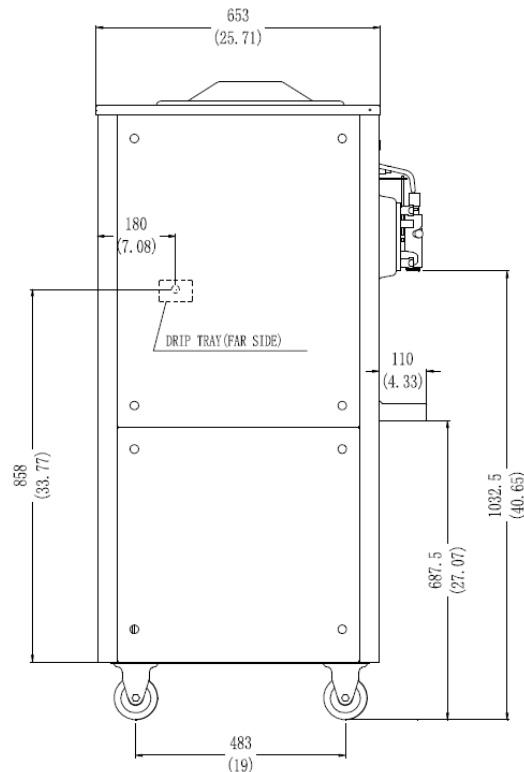
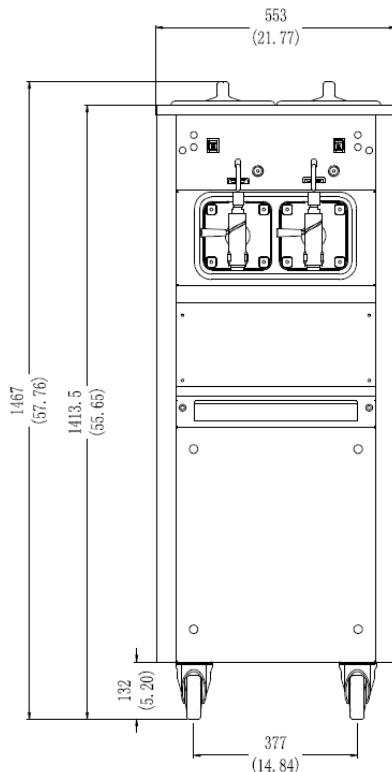
Electrical Plug: 1x NEMA L6-30

SIZE SPECIFICATIONS

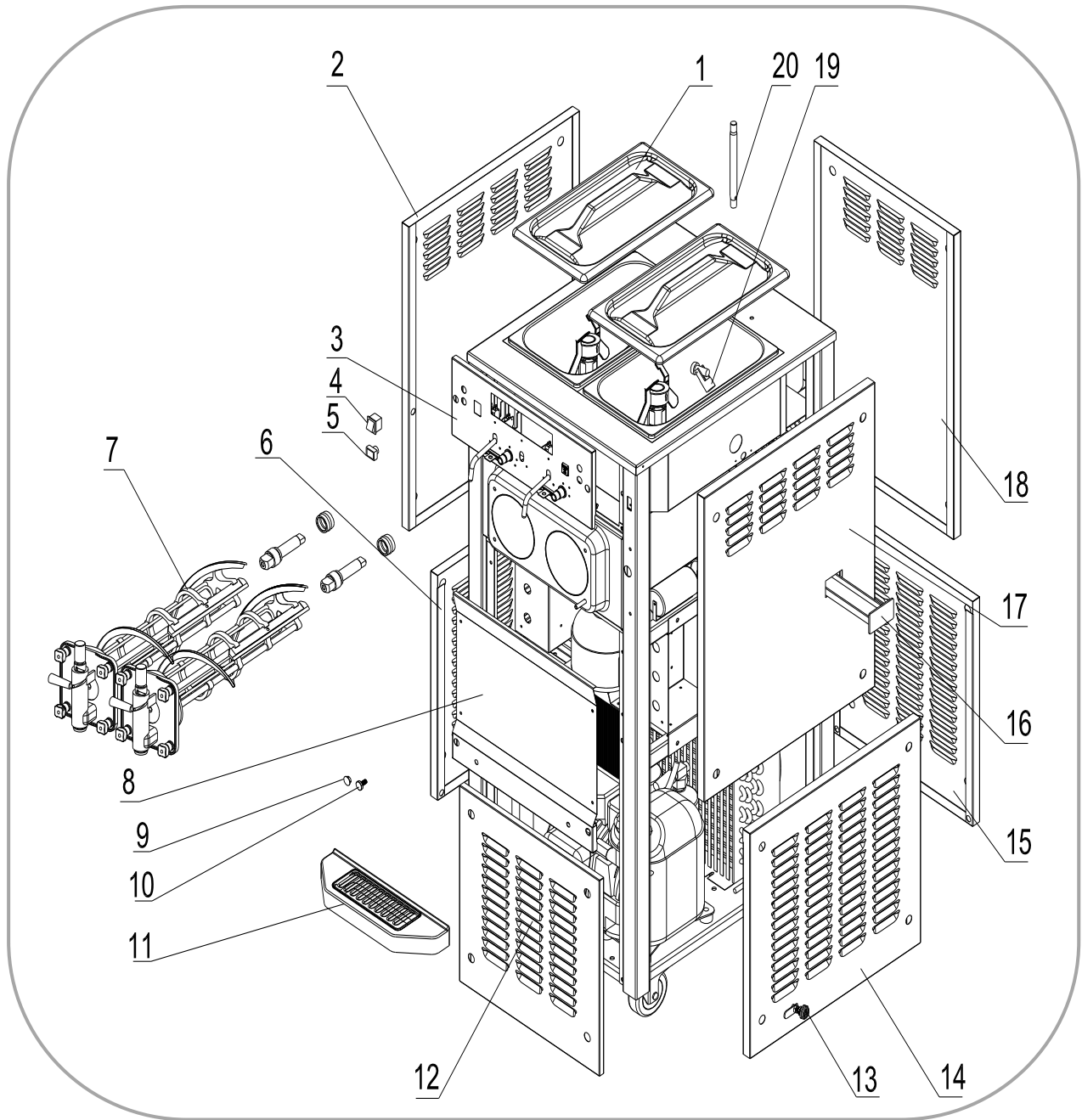
	Machine		Shipping	
Weight	251 kg	553 lbs	281 kg	619 lbs
Depth (mm / in)	653*	25.8*	870	34.3
Width (mm / in)	553*	21.8*	790	31.1
Height (mm / in)	1467	57.8	1640	64.6

Shipping Volume: 1.16 CBM / 39.81 CBF

** Machine Requires Minimum 6" Clearance on all sides*



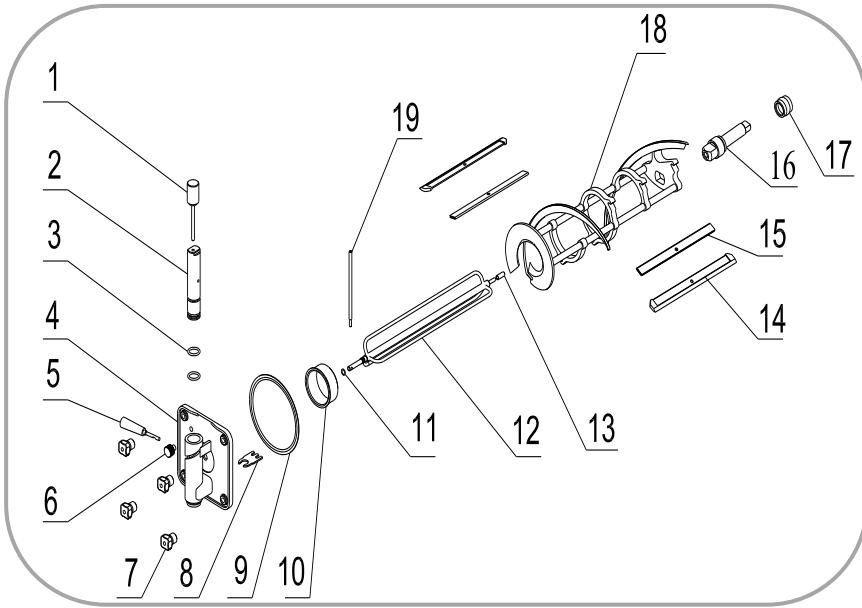
SPECS—EXTERNAL PARTS



Item	Part #	Description	Item	Part #	Description	Item	Part #	Description
1	3.4.03.01.004	Hopper Lid	9	3.4.07.01.001	Bolt Cover	17	2.3.4.21.005	Panel - Right - U
2	2.3.4.19.006	Panel - Left - U	10	3.6.39.004	Drip Tray Mount	18	2.3.4.14.004	Panel - Rear - U
3	2.3.4.07.013	Panel - Front - U	11	3.4.04.01.003	Drip Tray	19	3.1.03.04.009	Low Mix Sensor
4	3.1.03.03.002	Power Switch	12	2.3.4.17.013	Panel - Front - L	20	2.1.3.39.0006	Air Tube
5	3.1.03.04.015	Standby Switch	13	8.1.07.001	Panel Lock			
6	2.3.4.22.004	Panel - Left - L	14	2.3.4.22.004	Panel - Right - L			
7	2.1.1.10.0004	Beater	15	2.3.4.15.004	Panel - Rear - L			
8	2.3.4.16.006	Panel - Front - M	16	3.4.04.02.001	Internal Drip Tray			

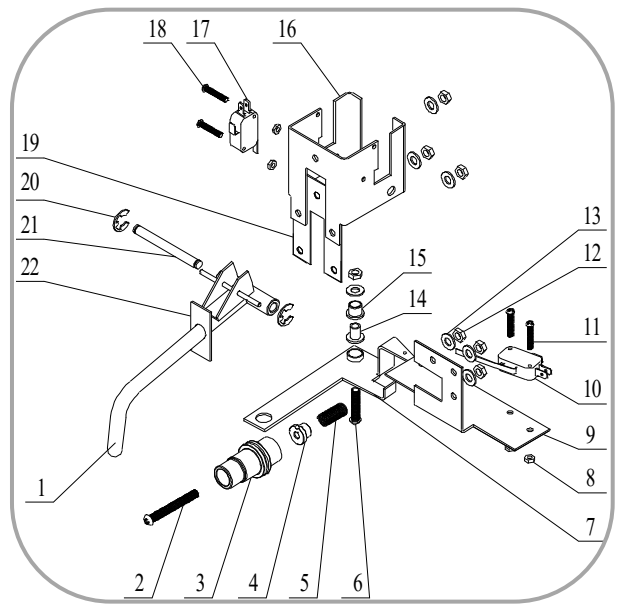
SPECS—OPERATING PARTS

Dispensing Door and Beater



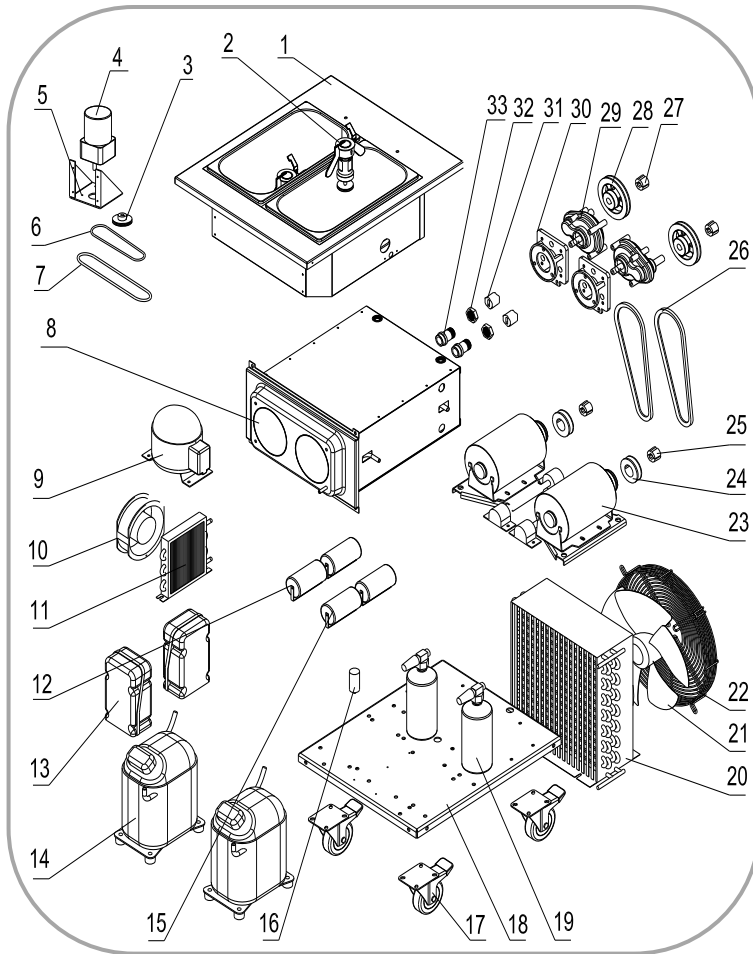
Item	Part #	Description
1	2.1.3.36.0004	Draw Valve Pin
2	2.1.3.01.0006	Draw Valve
3	3.4.08.01.036	O-Ring - Valve
4	2.1.3.14.0006	Dispensing Door
5	3.4.05.01.002	Dispensing Handle
6	3.4.07.08.001	Prime Plug
7	2.1.4.01.002	Hand Screws
8	2.1.4.04.014	Ice Buster
9	3.4.08.02.005	Door Gasket
10	3.4.01.03.003	Beater Guide
11	3.4.08.01.012	O-Ring - Torque
12	2.1.1.31.0001	Torque Assembly
13	3.4.01.03.004	Torque Guide
14	3.4.02.01.003	Scraper Blade
15	2.3.4.04.003	Scraper Blade Clip
16	2.1.3.25.0003	Drive Shaft
17	3.4.07.05.002	Drive Shaft Gasket
18	2.1.1.10.0004	Beater
19	2.3.6.03.004	Torque Arm

Control Levers

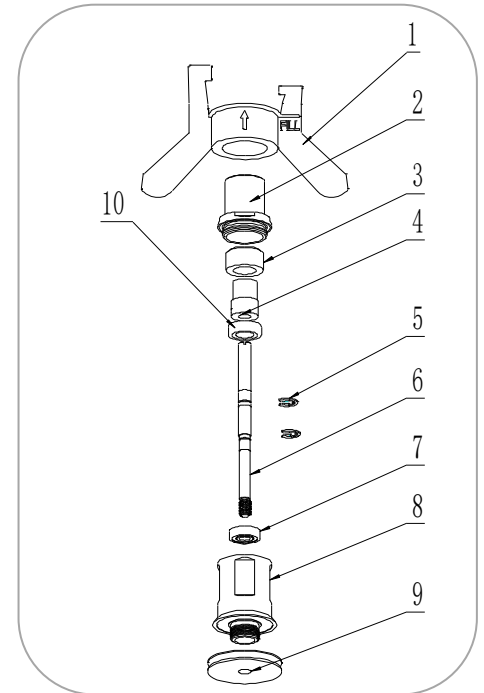


Item	Part #	Description
1	2.1.4.04.002	Draw Lever
2	3.6.22.026	Visc. Screw - M5x45
3	2.1.4.04.012	Viscosity Housing
4	2.1.4.04.011	Nut - Viscosity
5	3.6.02.006	Spring - 0.8mm
6	3.6.22.014	Screw - M5x30
7	2.3.6.03.005	Torque Lever
8	3.6.35.001	Nut - M4x3
9	2.3.6.03.016	Bracket - T Lever
10	3.1.03.02.002	Switch - Torque
11	3.6.21.010	Screw - M4x25
12	3.6.35.003	Nut - M5
13	3.6.14.022	Washer - 5x12x0.8
14	2.1.4.04.010	Bearing - T Lever
15	2.1.4.04.009	Sleeve - T Lever
16	2.1.4.04.020	Bracket - D Lever
17	3.1.03.01.004	Switch - Draw
18	3.6.20.001	Screw—M3x16
19	2.3.6.03.002	Guide - D Lever
20	3.6.34.001	Lock Ring - #5
21	2.1.4.04.001	Retention Pin
22	2.1.4.04.019	Draw Lever Seat

SPECS—INTERNAL PARTS



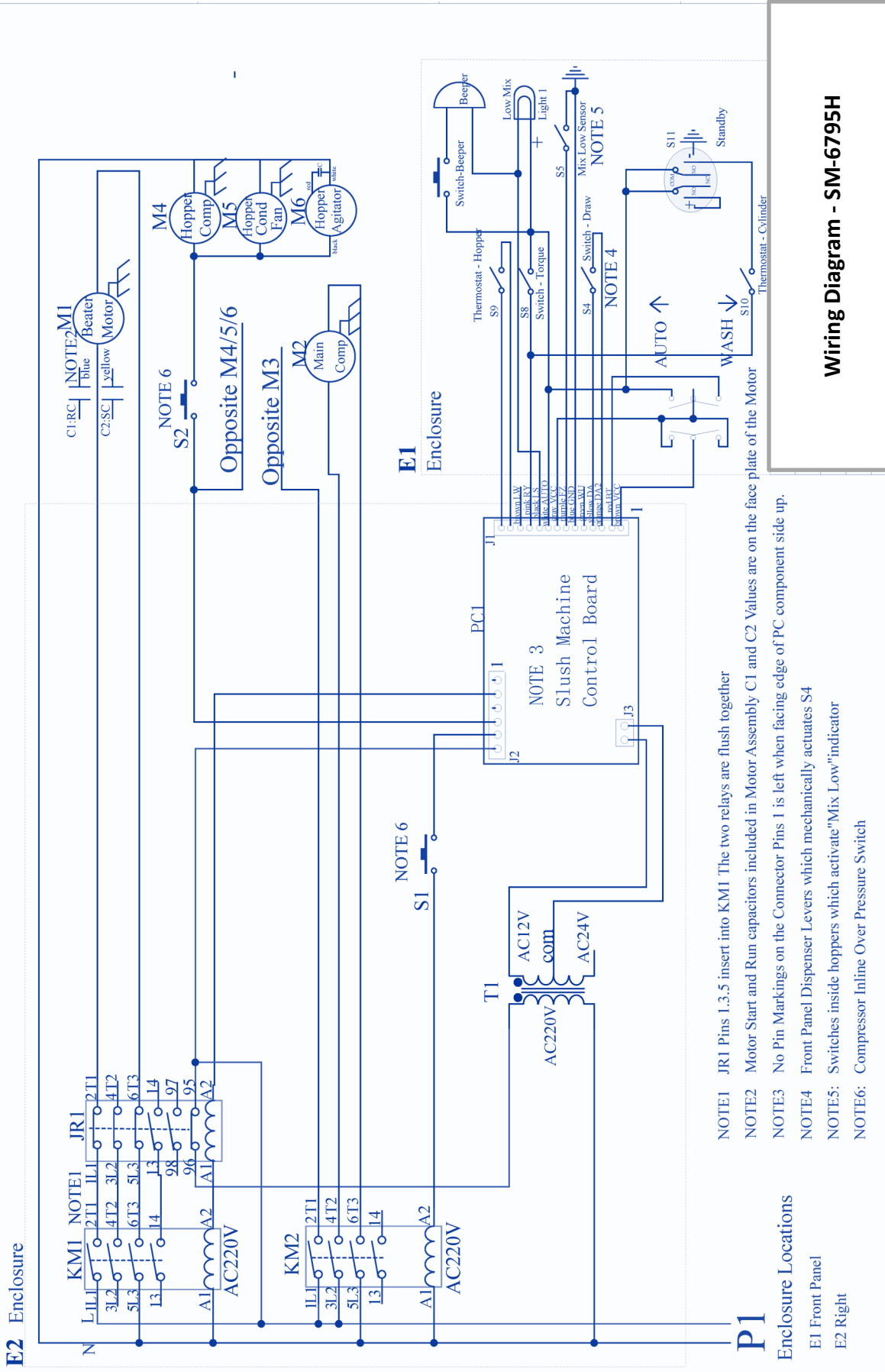
Hopper Agitator



Item	Part #	Description
1	2.1.1.23.0001	Agitator Blade
2	2.1.4.02.005	HA Housing Cap
3	2.1.4.02.002	HA Main Magnet
4	2.1.4.02.003	HA Shaft Magnet
5	3.6.34.003	C-Clip
6	2.1.3.42.0004	Drive Shaft
7	3.3.02.07.004	HA Bearing - Lower
8	2.1.4.02.001	HA Housing
9	2.1.4.02.015	Pulley - HA
10	3.3.02.07.003	HA Bearing - Upper
11	2.1.4.02.016	Pulley - Double

Item	Part #	Description	Item	Part #	Description
1	2.1.1.03.0020	Hopper Assembly	18	2.2.4.01.0028	Chassis
2	2.1.1.23.0001	Agitator Blade	19	3.2.04.08.001	Liquid Receiver
3	3.3.04.04.008	Pulley - HA 34mm	20	3.2.02.01.011	Condenser - Main
4	3.3.01.01.001	HA Motor	21	3.2.03.04.001	Fan Motor - Main
5	2.3.4.45.007	HA Motor Mount	22	3.2.03.04.001-1	Fan Cover
6	2.1.4.08.024	Belt - HA - 600mm	23	3.3.01.07.003	Motor - 600W
7	2.1.4.08.004	Belt - HA - 730mm	24	3.3.04.02.012	Pulley - 63x1-1008
8	2.1.1.06.0029	Cylinder Assembly	25	3.3.04.01.005	Bushing - 1008
9	3.2.01.01.002	Compressor - Aux	26	3.3.03.01.018	Belt - XPA982
10	3.2.03.01.001	Fan Motor - Aux	27	3.3.04.01.007	Bushing - 1210
11	3.2.02.01.001	Condenser - Main	28	3.3.04.02.011	Pulley - 168x1-1210
12	3.1.02.22.052	Capacitor - Start	29	3.3.02.01.005	Gear Box
13	3.2.01.04.004	Start Component	30	2.1.3.15.0003	Gear Box Mount
14	3.2.01.02.005	Compressor - Main	31	3.3.02.04.002	Drive Coupling
15	3.1.02.22.032	Capacitor - Run	32	3.3.02.02.010	Nut - RS Bearing
16	3.2.03.04.001-2	Capacitor - Fan	33	3.3.02.02.002	Rear Shell Bearing
17	3.3.05.02.002	Caster - Swivel			

SPECS — WIRING



Wiring Diagram - SM-6795H

Item	Part #	Description	Item	Part #	Description	Item	Part #	Description
M1	3.3.01.07.003	Motor - 600W	M6	3.3.01.01.001	HA Motor	S4	3.1.03.01.004	Draw Switch
M2	3.2.01.02.005	Compressor - Main	KM	3.1.01.01.010	Contactors	S5	3.1.03.04.009	Low Mix Sensor
M3	3.2.03.04.001	Fan Motor - Main	JR	3.1.01.02.010	Thermal Relay	S8	3.1.03.02.002	Torque Switch
M4	3.2.01.01.002	Compressor - Aux	T	3.1.01.04.005	Transformer	S9	3.1.01.07.003	Thermostat - H
M5	3.2.03.01.001	Fan Motor - Aux	S1/2	3.2.04.06.004	Pressure Switch	S10	3.1.01.07.003	Thermostat - C
S11	3.1.03.04.015	Standby Switch	PWR	3.1.03.03.002	Power Switch	LAMP	3.1.02.14.001	Low Mix Light
BELL	3.1.02.15.003	Low Mix Alarm	PCB	2.1.1.30.0012	Control Board			

