

SPACEMAN USA

COMMERCIAL ICE CREAM & FROZEN BEVERAGE EQUIPMENT

PARTS LIST



MODEL SM-6268H

SOFT SERVE - FLOOR STANDING - THREE FLAVOR + TWO TWIST

Customer Service

Sunday – Saturday
8 AM – 5 PM Mountain

Toll-Free: +1 (888) 610-5520

Local: +1 (720) 328-1020

service@spacemanusa.com

Spaceman USA, LLC

226 Commerce Street
Suite B
Broomfield, CO 80020

Sales and Product Information

Monday – Friday
8 AM – 5 PM Mountain

Toll-Free: +1 (888) 610-5520

Local: +1 (720) 328-1020

sales@spacemanusa.com

info@spacemanusa.com

TROUBLESHOOTING

PROBLEM: STOP 1 - LOW TEMP PROTECT

Probable Cause

1. Inadequate mix in hopper
2. Improper mixing of product
3. Air Tube is not installed correctly
4. Viscosity adjustment is set incorrectly
5. Product being drawn too quickly

Remedy

1. Ensure hopper is at least half full
2. Follow manufacturer instructions for mixing product; ensure correct mix ratios
3. Clean Air Tube, ensure proper orientation
4. Lower viscosity setting as required (Page 17)
5. Ensure Air Tube not clogged, allow machine 2-3 seconds in between servings.

PROBLEM: STOP 2 - MOTOR OVERLOAD

Probable Cause

1. Viscosity adjustment is set incorrectly
2. Inadequate mix in hopper
3. Improper mixing of product
4. Air Tube is not installed correctly
5. Product being drawn too quickly

Remedy

1. Lower viscosity setting as required (Page 17)
2. Ensure hopper is at least half full
3. Follow manufacturer instructions for mixing product; ensure correct mix ratios
4. Clean Air Tube, ensure proper orientation
5. Ensure Air Tube not clogged, allow machine 2-3 seconds in between servings to recover.

PROBLEM: PRODUCT TOO SOFT

Probable Cause

1. Machine not cleaned/lubricated adequately
2. Inadequate mix in hopper
3. Improper mixing of product
4. Machine does not have adequate ventilation
5. Viscosity adjustment is set incorrectly

Remedy

1. Clean and properly lubricate machine daily
2. Ensure hopper is at least half full
3. Follow manufacturer instructions for mixing product; ensure correct mix ratios
4. Ensure at least 6" of clearance on all sides
5. Raise viscosity setting as required (Page 17)

PROBLEM: HOPPER NOT COLD ENOUGH

Probable Cause

1. Warm Product Recently Added
2. Hopper Temperature Setting too High
3. Temperature Offsets need adjustment

Remedy

1. Allow at least 1 hour after adding new mix for hopper temperatures to stabilize
2. Adjust Hopper Temperature down.
3. Call Spaceman Technical Support

PROBLEM: HOPPER FREEZING

Probable Cause

1. Inadequate Mix in Hopper
2. Hopper Temperature Setting too Low

Remedy

1. Ensure hopper is at least half full
2. Adjust Hopper Temperature Up

PROBLEM: MACHINE MAKING NOISE

Probable Cause

1. Improper Assembly
2. Wearable Parts Need Replacement
3. Internal Cleaning / Maintenance Required
4. Damaged Internal Parts

Remedy

1. Stop machine use, drain product with machine powered OFF. Clean and Inspect Parts.
2. Replace wearable parts with new Tune-Up Kit and Scraper Blades at least once every 3 months
3. Contact Spaceman USA Technical Support
4. Inspect parts carefully for damage, ensure proper assembly. Replace as required.

PROBLEM: STOP 4 - TEMPERATURE

Probable Cause

1. Malfunctioning Temperature Probe

Remedy

1. Replace Temperature Probe

PROBLEM: STOP 6 - MOTOR AMP

Probable Cause

1. Malfunctioning Power Board

Remedy

1. Replace Power Board

PROBLEM: PRODUCT LEAKS EXCESSIVELY INTO INTERNAL DRIP TRAY

Probable Cause

1. Improper or inadequate lubrication of drive shaft gasket
2. Damaged, missing, or improperly installed drive shaft gasket

Remedy

1. Use sufficient food-grade lubricant, and add sufficient lubricant inside drive shaft gasket during assembly (Page 11)
2. Replace drive shaft gasket every 1 to 3 months; replace torque assembly guide every 1 to 3 months

PROBLEM: PRODUCT LEAKS EXCESSIVELY FROM DISPENSING DOOR SPOUT

Probable Cause

1. Improper or inadequate lubrication of draw valve and draw valve O-rings.
2. Cracked, broken, or worn draw valve O-rings

Remedy

1. Use sufficient food-grade lubricant when assembling draw valve (Page 12)
2. Replace O-rings every 1 to 3 months

PROBLEM: MACHINE SHUTS DOWN AUTOMATICALLY

Probable Cause

1. Cylinders are experiencing freeze-up (usually due to viscosity being set too high for selected product)

Remedy

1. Reset machine (Page 16), and lower viscosity as required (Page 17)

MACHINE SPECIFICATIONS

SM-6265H

SOFT SERVE FREEZER

PRODUCT INFORMATION

Type	Counter Top
Flavors	3 + 2 Twist
Cooling	Air Cooled
Freezing Cylinders	3x 1.7 L / 1.8 qt
Product Mix Hoppers	3x 8.0 L / 8.5 qt
Output (4oz Servings)	68.0 qt / hr 549 servings / hr
Motor	3x 1.20 HP
Compressor (Main)	1x 6500 BTU, R404A
Compressor (Auxilliary)	1x 650 BTU, R134A

FEATURES

Machine Controls	Triple, Digital
Refrigerated Hopper	Yes, Digital Control
Hopper Agitator	Yes
Temperature Display	Yes
Standby Mode	Yes
Low Mix Indicator Light	Yes
Low Mix Indicator Alarm	No
Low Temperature Protection	Yes
Motor Amperage Protection	Yes, Mechanical
High Pressure Protection	Yes
Thermal Overload Protection	Yes



DESCRIPTION

A medium capacity, 5-handle, gravity feed, counter top soft serve freezer. Capable of producing a variety of products including: Soft Serve, Frozen Yogurt, Ice Cream, Custards, and Sorbets. Independent digital control systems automatically regulate and maintain consistent product quality on each cylinder. Refrigerated hoppers and Standby Mode keeps product fresh, even overnight. Three cylinders and two twists allow for maximum flavor variety.

CUSTOM OPTIONS

Water Cooled, Air Chute, Spinner (1 or 2)

ELECTRICAL SPECIFICATIONS

	Maximum Fuse Size	Min. Circuit Ampacity	Poles (P) Wires (W)
208-230/60/1	1 x 30A	1 x 22A	2P / 3W

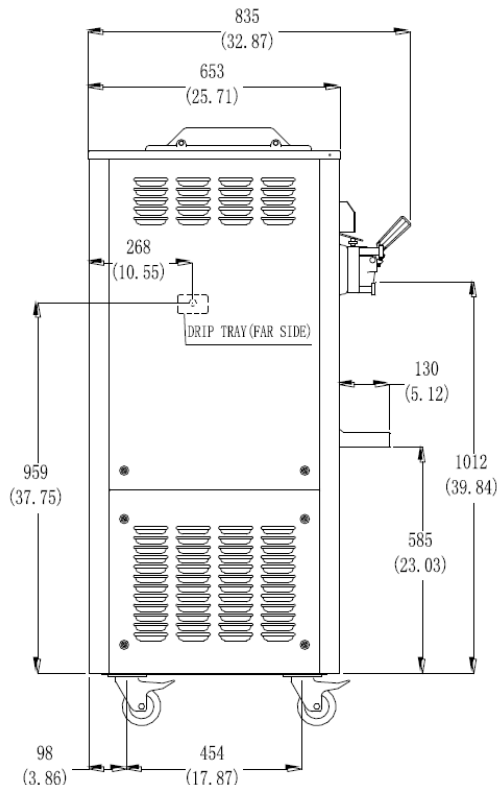
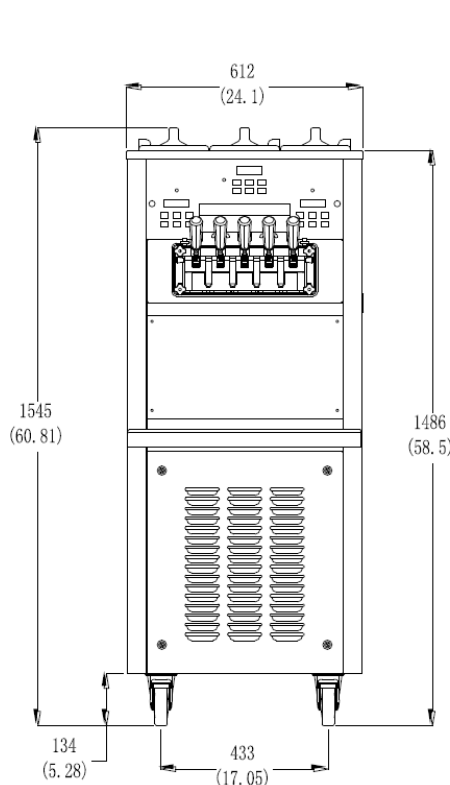
Electrical Plug: 1x NEMA L6-30

SIZE SPECIFICATIONS

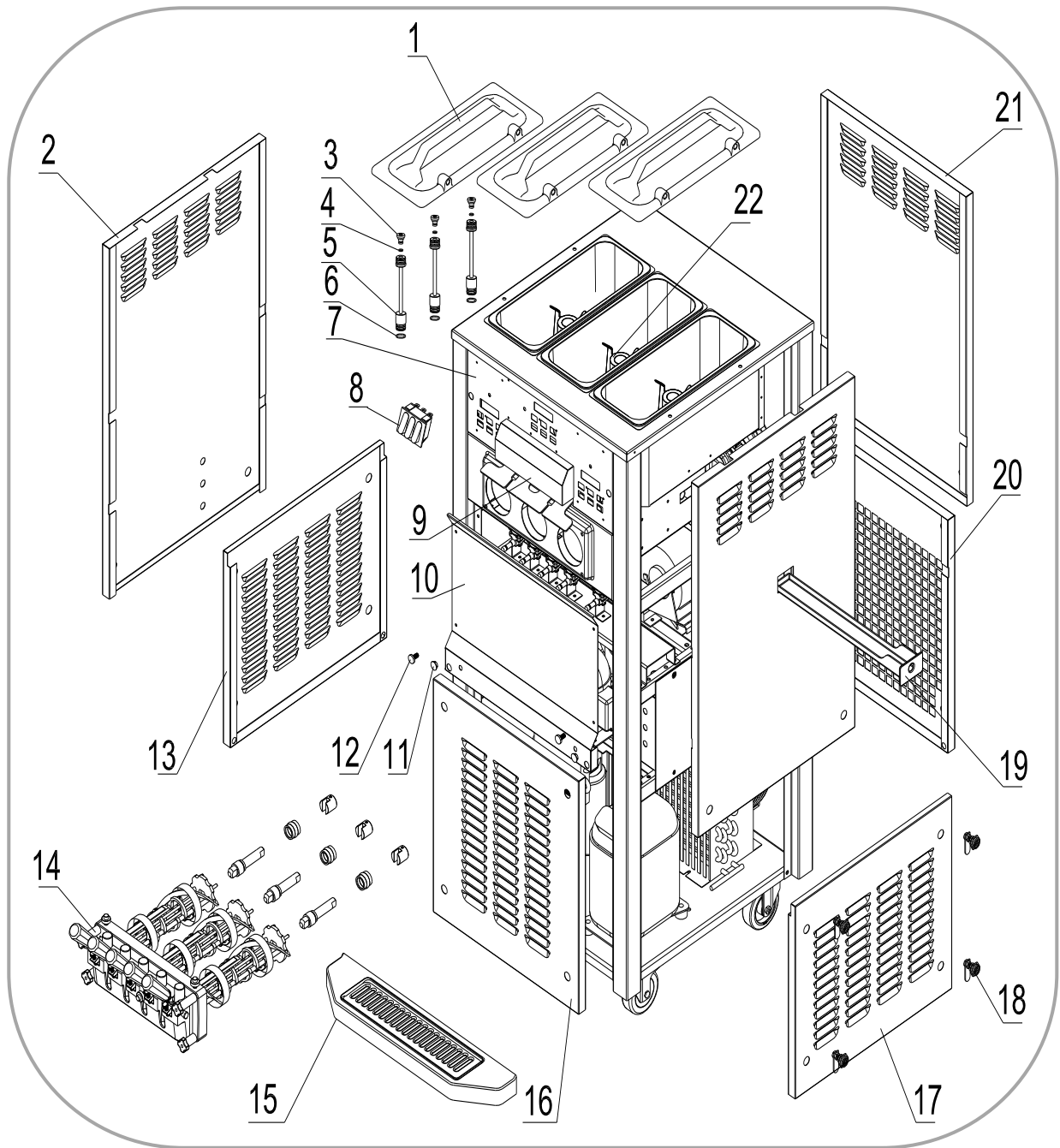
	Machine		Shipping	
Weight	238 kg	529 lbs	251 kg	571 lbs
Depth (mm / in)	792*	31.2*	965	38.0
Width (mm / in)	612*	24.1*	680	26.8
Height (mm / in)	1044	41.2	1200	47.2

Shipping Volume: 0.79 CBM / 27.81 CBF

* Machine Requires Minimum 6" Clearance on all sides



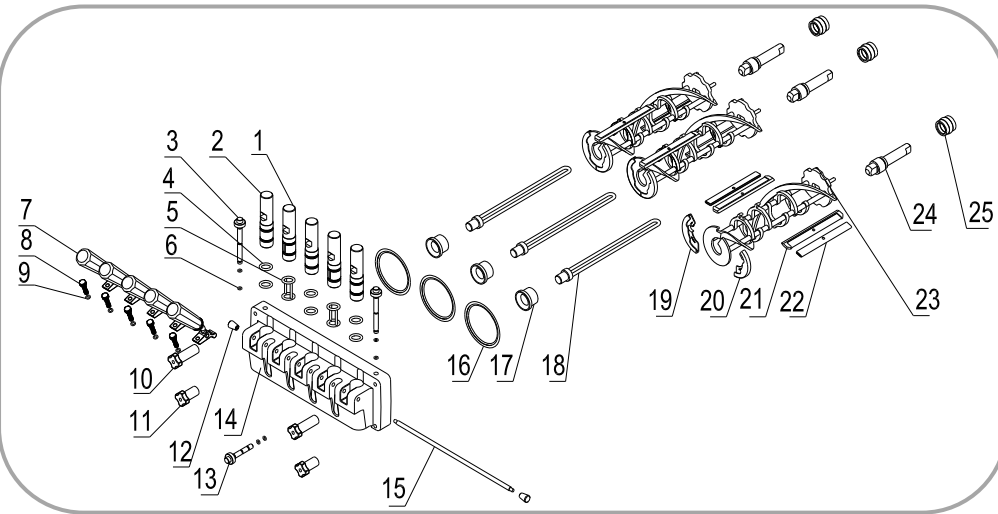
SPECS—EXTERNAL PARTS



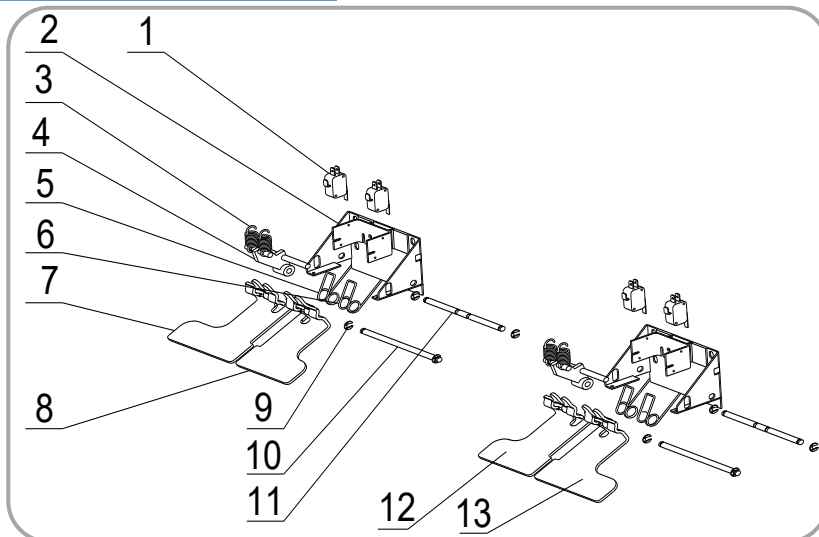
Item	Part #	Description	Item	Part #	Description	Item	Part #	Description
1	3.4.03.01.002	Hopper Lid	9	3.4.07.07.006	Switch Cover	17	2.3.4.22.005	Panel - Right - L
2	2.3.4.19.008	Panel - Left - U	10	2.3.4.16.011	Panel - Front - M	18	8.1.07.001	Panel Lock
3	2.1.3.23.0001	Air Tube Cap	11	3.4.07.01.001	Bolt Cover	19	3.4.04.02.001	Internal Drip Tray
4	3.4.08.01.028	O-Ring - Cap	12	3.6.39.004	Drip Tray Mount	20	2.3.4.15.005	Panel - Rear - L
5	2.1.1.22.0004	Air Tube	13	2.3.4.22.005	Panel - Left - L	21	2.3.4.14.005	Panel - Rear - U
6	3.4.08.01.002	O-Ring - Air Tube	14	2.1.1.15.0008	Dispensing Door	22	2.1.1.23.0003	Agitator Blade
7	2.3.4.07.012	Panel - Front - U	15	3.4.04.01.008	Drip Tray			
8	3.1.03.03.005	Power Switch	16	2.3.4.17.016	Panel - Front - L			

SPECS—OPERATING PARTS

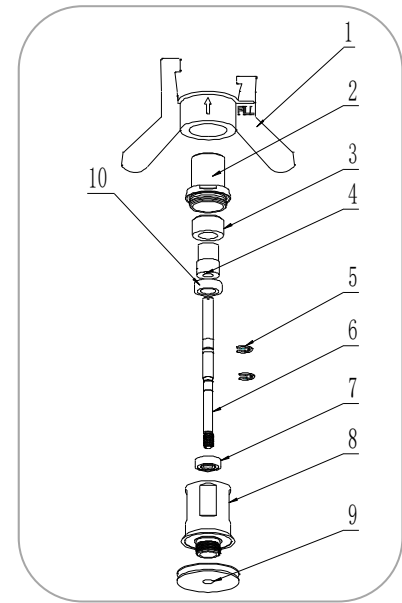
Dispensing Door and Beater



Item	Part #	Description	Item	Part #	Description
1	2.1.3.02.0004	Draw Valve - Mid	14	2.1.3.14.0007	Dispensing Door
2	2.1.3.01.0008	Draw Valve - Side	15	2.1.3.27.0005	Retention Pin
3	2.1.3.02.0015	Prime Plug - Side	16	3.4.08.02.007	Door Gasket
4	3.4.08.01.011	O-Ring - Valve	17	3.4.01.03.001	Beater Guide
5	3.4.08.01.019	H-Ring - Valve	18	2.1.3.11.0001	Beater Rod
6	3.4.08.01.013	O-Ring - Prime	19	3.4.01.02.002	Beater Shoe - L
7	3.4.05.01.001	Dispensing Handle	20	3.4.01.02.001	Beater Shoe - R
8	3.6.39.009	Adjustment Screw	21	3.4.02.01.002	Scraper Blade
9	3.4.08.01.012	O-Ring - Screw	22	2.3.4.04.001	Scraper Blade Clip
10	3.4.05.03.002	Hand Screw - Long	23	2.1.1.10.0002	Beater
11	3.4.05.02.001	Hand Screw - Short	24	2.1.3.25.0001	Drive Shaft
12	2.1.3.27.0025	Nut - Retention Pin	25	3.4.07.05.002	Drive Shaft Gasket
13	2.1.3.02.0017	Prime Plug - Front			



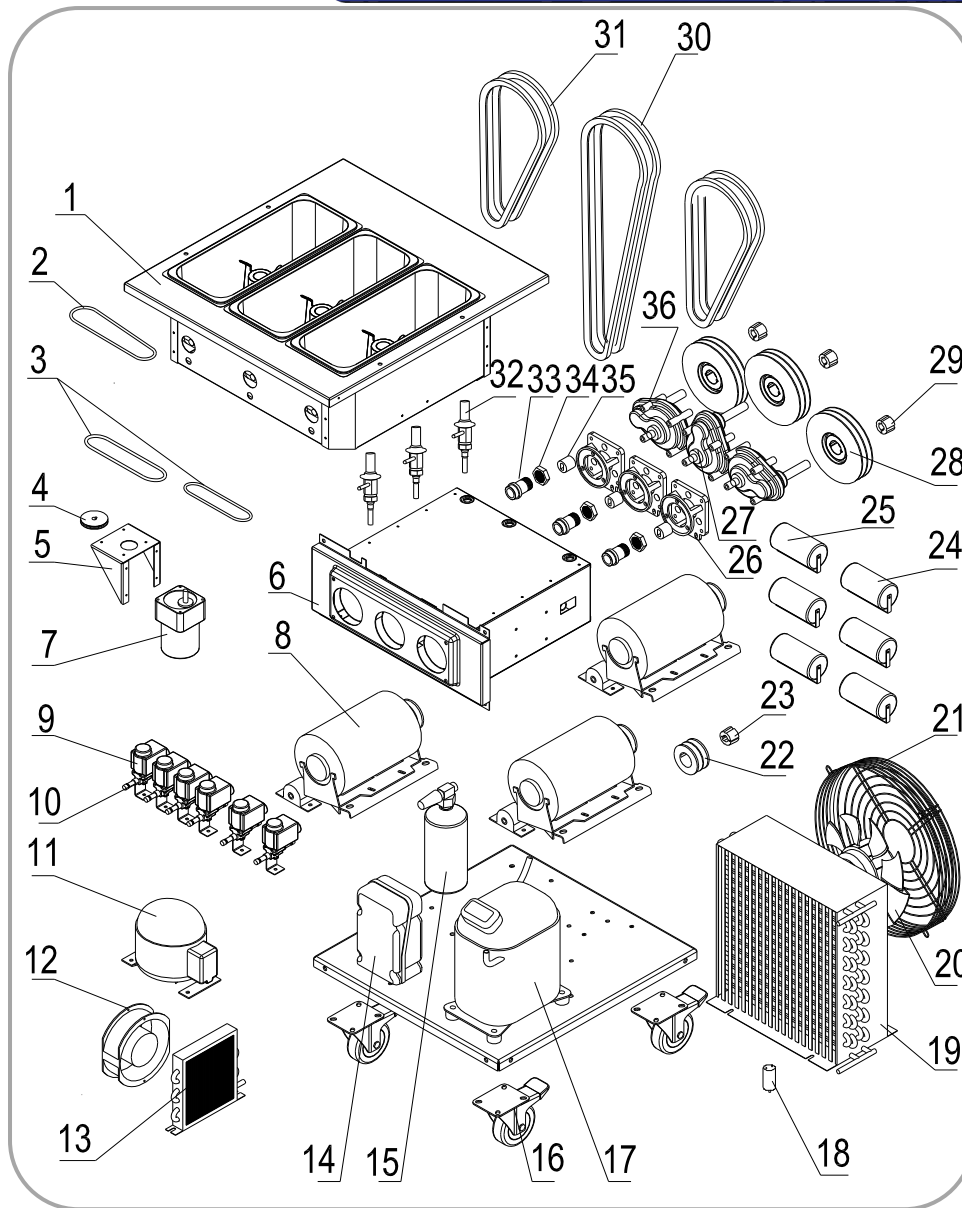
Hopper Agitator



Item	Part #	Description
1	2.1.1.23.0003	Agitator Blade
2	2.1.4.02.005	HA Housing Cap
3	2.1.4.02.002	HA Main Magnet
4	2.1.4.02.003	HA Shaft Magnet
5	3.6.34.003	C-Clip
6	2.1.3.42.0001	Drive Shaft
7	3.3.02.07.004	HA Bearing - Lower
8	2.1.4.02.001	HA Housing
9	2.1.4.02.015	Pulley - HA
10	3.3.02.07.003	HA Bearing - Upper
11	2.1.4.02.016	Pulley - Double

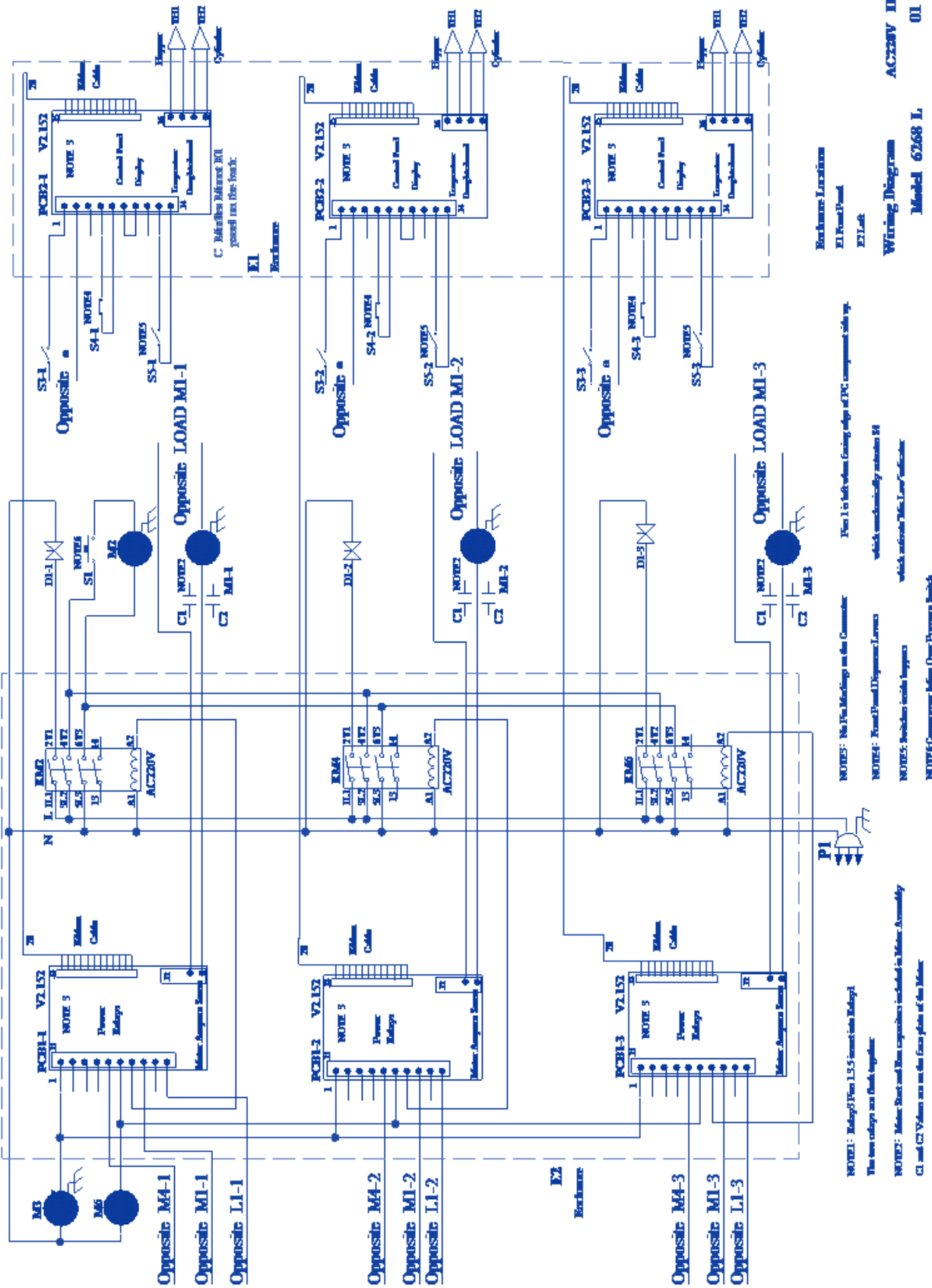
Item	Part #	Description
1	3.1.03.01.004	Switch - Draw
2	2.1.1.19.0010	Switch Mount
3	3.6.34.002	C-Clip - #6
4	2.1.1.19.0006	Draw Arm Lever
5	3.6.01.002	Spring - Return - L
6	3.6.01.001	Spring - Return - R
7	2.1.4.05.011	Return Arm - L
8	2.1.4.05.012-1	Return Arm - LM
9	3.6.34.002	C-Clip - #6
10	2.1.4.05.001	Retention Pin - F
11	2.1.4.05.002	Retention Pin - R
12	2.1.4.05.011-1	Return Arm - RM
13	2.1.4.05.012	Return Arm - R

SPECS—INTERNAL PARTS



Item	Part #	Description	Item	Part #	Description	Item	Part #	Description
1	2.1.1.03.0005	Hopper Assembly	13	3.2.02.01.001	Condenser - Aux	25	3.1.02.22.061	Capacitor - Start
2	2.1.4.08.047	Belt - HA - 280mm	14	3.2.01.04.004	Start Component	26	2.1.3.15.0002	Gear Box Mount
3	2.1.4.08.048	Belt - HA - 480mm	15	3.2.04.08.001	Liquid Receiver	27	3.3.02.01.001	Gear Box - Middle
4	3.3.04.04.007	Pulley - HA - 26mm	16	3.3.05.02.001	Caster—Swivel	28	3.3.04.02.013	Pulley - 160x-1008
5	2.3.4.45.007	Bracket - HA Motor	17	3.2.01.02.005	Compressor - Main	29	3.3.04.01.005	Bushing - 1008
6	2.1.1.06.0017	Cylinder Assembly	18	3.2.03.04.001-2	Capacitor - Fan	30	3.3.03.03.016	Belt - A1321
7	3.3.01.01.001	HA Motor	19	3.2.02.01.007	Condenser - Main	31	3.3.03.03.004	Belt - A710
8	3.3.01.05.003	Motor - 900W	20	3.2.03.04.001	Fan Motor - Main	32	3.2.04.01.003	Hot Gas Discharge
9	3.2.04.04.015	Solenoid Coil	21	3.2.03.04.001-1	Fan Cover	33	3.3.02.02.001	Rear Shell Bearing
10	3.2.04.04.002	Solenoid Body	22	3.3.04.02.001	Pulley—63x2-1008	34	3.3.02.02.010	Nut - RS Bearing
11	3.2.01.01.003	Compressor - Aux	23	3.3.04.01.005	Bushing - 1008-16	35	3.3.02.04.001	Drive Coupling
12	3.2.03.01.001	Fan Motor - Aux	24	3.1.02.22.009	Capacitor - Running	36	3.3.02.01.002	Gear Box - Side

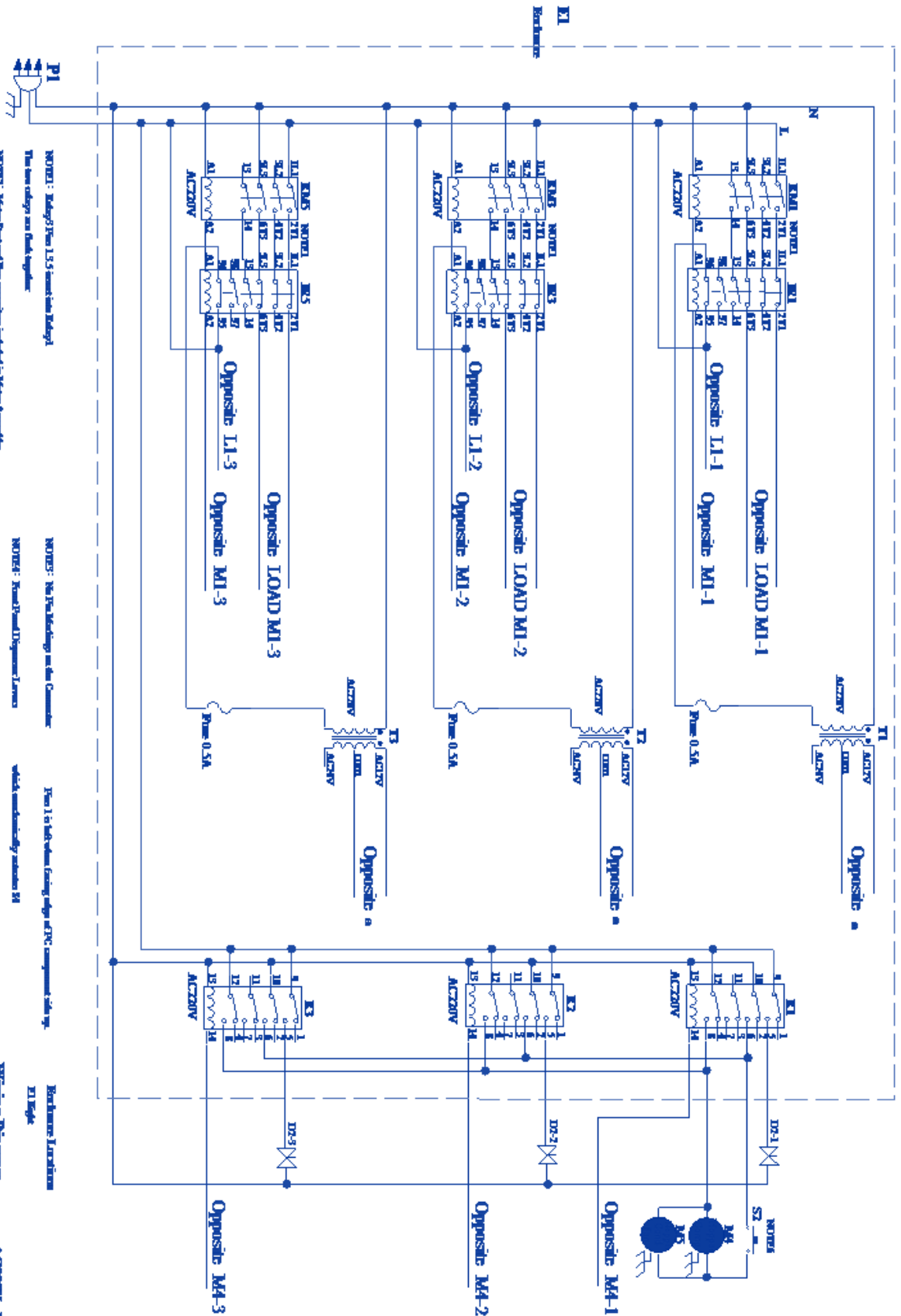
SPECS—WIRING DIAGRAM - LEFT



Wiring Diagram
Model 6268 L
AC220V 1PH
01

Item	Part #	Description	Item	Part #	Description	Item	Part #	Description
M1	3.3.01.05.003	Motor - 900W	M6	3.3.01.01.001	Agitator Motor	PC1	2.2.1.01.0007	Power Board
M2	3.2.01.02.005	Compressor - Main	JR	3.1.01.02.011	Thermal Relay	PC2-1	2.2.1.01.0004	Control Board
M3	3.2.03.04.001	Fan Motor - Main	KM	3.1.01.01.010	Contactor	PC2-2	2.2.1.01.0009	Control Board
M4	3.2.01.01.003	Compressor - Aux	T	3.1.01.04.007	Transformer	PC2-3	2.2.1.01.0004	Control Board
M5	3.2.03.01.001	Fan Motor - Aux	TH	3.1.02.13.020	Thermostat	D	3.2.04.04.015	Solenoid Coil
						F	3.1.02.08.002	Fuse - 0.5A
						S1/2	3.2.04.06.004	Pressure Switch
						S3	3.1.03.03.005	Power Switch
						S4	3.1.03.01.004	Draw Switch
						S5	3.1.03.04.009	Low Mix Sensor

WIRING DIAGRAM - RIGHT



Item	Part #	Description	Item	Part #	Description	Item	Part #	Description	Item	Part #	Description
M1	3.3.01.05.003	Motor - 900W	M6	3.3.01.01.001	Agitator Motor	PC1	2.2.1.01.0007	Power Board	SI/2	3.2.04.06.004	Pressure Switch
M2	3.2.01.02.005	Compressor - Main	JR	3.1.01.02.011	Thermal Relay	PC2-1	2.2.1.01.0004	Control Board	S3	3.1.03.03.005	Power Switch
M3	3.2.03.04.001	Fan Motor - Main	KM	3.1.01.01.010	Contactors	PC2-2	2.2.1.01.0009	Control Board	S4	3.1.03.01.004	Draw Switch
M4	3.2.01.01.003	Compressor - Aux	T	3.1.01.04.007	Transformer	PC2-3	2.2.1.01.0004	Control Board	S5	3.1.03.04.009	Low Mix Sensor
M5	3.2.03.01.001	Fan Motor - Aux	TH	3.1.02.13.020	Thermostat	D	3.2.04.04.015	Solenoid Coil	F	3.1.02.08.002	Fuse - 0.5A

