

SPACEMAN^{USA}

COMMERCIAL ICE CREAM & FROZEN BEVERAGE EQUIPMENT

PARTS LIST



MODEL SM-6236H

SOFT SERVE - COUNTER TOP - SINGLE FLAVOR

Customer Service

Sunday – Saturday
8 AM – 5 PM Mountain

Toll-Free: +1 (888) 610-5520
Local: +1 (720) 328-1020

service@spacemanusa.com

Spaceman USA, LLC

226 Commerce Street
Suite B
Broomfield, CO 80020

Sales and Product Information

Monday – Friday
8 AM – 5 PM Mountain

Toll-Free: +1 (888) 610-5520
Local: +1 (720) 328-1020

sales@spacemanusa.com
info@spacemanusa.com

TROUBLESHOOTING

PROBLEM: STOP 1 - LOW TEMP PROTECT

Probable Cause

1. Inadequate mix in hopper
2. Improper mixing of product
3. Air Tube is not installed correctly
4. Viscosity adjustment is set incorrectly
5. Product being drawn too quickly

Remedy

1. Ensure hopper is at least half full
2. Follow manufacturer instructions for mixing product; ensure correct mix ratios
3. Clean Air Tube, ensure proper orientation
4. Lower viscosity setting as required (Page 17)
5. Ensure Air Tube not clogged, allow machine 2-3 seconds in between servings.

PROBLEM: STOP 2 - MOTOR OVERLOAD

Probable Cause

1. Viscosity adjustment is set incorrectly
2. Inadequate mix in hopper
3. Improper mixing of product
4. Air Tube is not installed correctly
5. Product being drawn too quickly

Remedy

1. Lower viscosity setting as required (Page 17)
2. Ensure hopper is at least half full
3. Follow manufacturer instructions for mixing product; ensure correct mix ratios
4. Clean Air Tube, ensure proper orientation
5. Ensure Air Tube not clogged, allow machine 2-3 seconds in between servings to recover.

PROBLEM: PRODUCT TOO SOFT

Probable Cause

1. Machine not cleaned/lubricated adequately
2. Inadequate mix in hopper
3. Improper mixing of product
4. Machine does not have adequate ventilation
5. Viscosity adjustment is set incorrectly

Remedy

1. Clean and properly lubricate machine daily
2. Ensure hopper is at least half full
3. Follow manufacturer instructions for mixing product; ensure correct mix ratios
4. Ensure at least 6" of clearance on all sides
5. Raise viscosity setting as required (Page 17)

PROBLEM: HOPPER NOT COLD ENOUGH

Probable Cause

1. Warm Product Recently Added
2. Hopper Temperature Setting too High
3. Temperature Offsets need adjustment

Remedy

1. Allow at least 1 hour after adding new mix for hopper temperatures to stabilize
2. Adjust Hopper Temperature down.
3. Call Spaceman Technical Support

PROBLEM: HOPPER FREEZING

Probable Cause

1. Inadequate Mix in Hopper
2. Hopper Temperature Setting too Low

Remedy

1. Ensure hopper is at least half full
2. Adjust Hopper Temperature Up

PROBLEM: MACHINE MAKING NOISE

Probable Cause

1. Improper Assembly
2. Wearable Parts Need Replacement
3. Internal Cleaning / Maintenance Required
4. Damaged Internal Parts

Remedy

1. Stop machine use, drain product with machine powered OFF. Clean and Inspect Parts.
2. Replace wearable parts with new Tune-Up Kit and Scraper Blades at least once every 3 months
3. Contact Spaceman USA Technical Support
4. Inspect parts carefully for damage, ensure proper assembly. Replace as required.

PROBLEM: STOP 4 - TEMPERATURE

Probable Cause

1. Malfunctioning Temperature Probe

Remedy

1. Replace Temperature Probe

PROBLEM: STOP 6 - MOTOR AMP

Probable Cause

1. Malfunctioning Power Board

Remedy

1. Replace Power Board

PROBLEM: PRODUCT LEAKS EXCESSIVELY INTO INTERNAL DRIP TRAY

Probable Cause

1. Improper or inadequate lubrication of drive shaft gasket
2. Damaged, missing, or improperly installed drive shaft gasket

Remedy

1. Use sufficient food-grade lubricant, and add sufficient lubricant inside drive shaft gasket during assembly (Page 11)
2. Replace drive shaft gasket every 1 to 3 months; replace torque assembly guide every 1 to 3 months

PROBLEM: PRODUCT LEAKS EXCESSIVELY FROM DISPENSING DOOR SPOUT

Probable Cause

1. Improper or inadequate lubrication of draw valve and draw valve O-rings.
2. Cracked, broken, or worn draw valve O-rings

Remedy

1. Use sufficient food-grade lubricant when assembling draw valve (Page 12)
2. Replace O-rings every 1 to 3 months

PROBLEM: MACHINE SHUTS DOWN AUTOMATICALLY

Probable Cause

1. Cylinders are experiencing freeze-up (usually due to viscosity being set too high for selected product)

Remedy

1. Reset machine (Page 16), and lower viscosity as required (Page 17)

MACHINE SPECIFICATIONS

SM-6236H

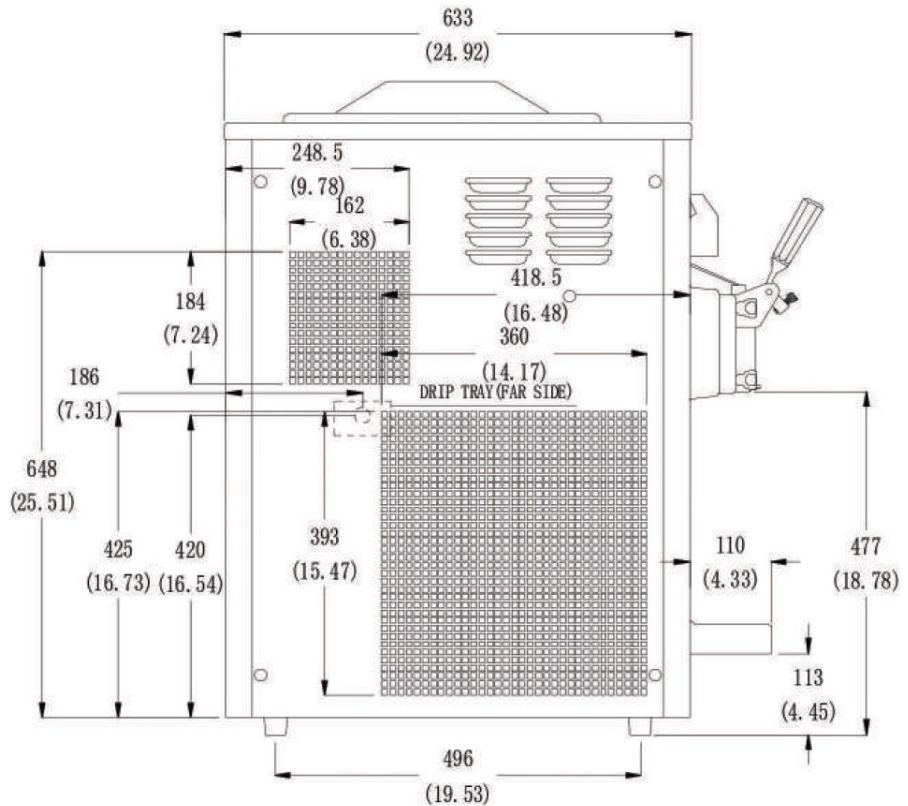
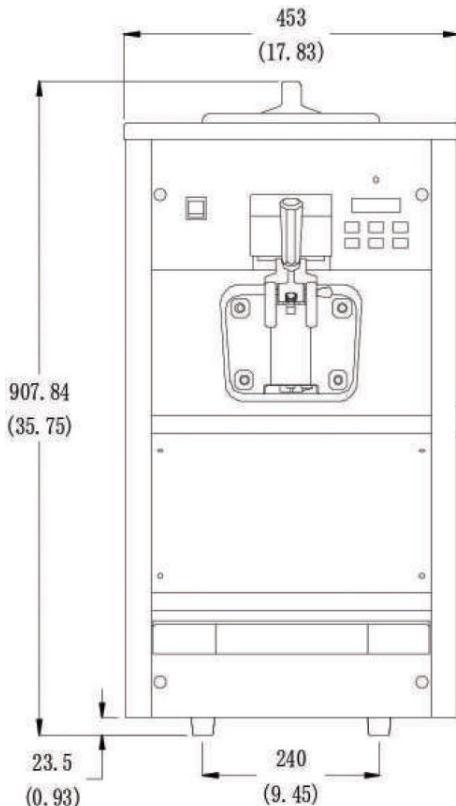
SOFT SERVE FREEZER

PRODUCT INFORMATION

Type	Counter Top
Flavors	1
Cooling	Air Cooled
Freezing Cylinders	1x 3.2 L / 3.4 qt
Product Mix Hoppers	1x 15.0 L / 15.9 qt
Output (4oz Servings)	40.0 qt / hr 321 servings / hr
Motor	1x 1.00 HP, 900W
Compressor (Main)	1x 6500 BTU, R404A
Compressor (Auxilliary)	1x 480 BTU, R134A

FEATURES

Machine Controls	Single, Digital
Refrigerated Hopper	Yes, Digital Control
Hopper Agitator	Yes
Temperature Display	Yes
Standby Mode	Yes
Low Mix Indicator Light	Yes
Low Mix Indicator Alarm	No
Low Temperature Protection	Yes
Motor Amperage Protection	Yes, Mechanical
High Pressure Protection	Yes
Thermal Overload Protection	Yes



DESCRIPTION

A high capacity, single flavor, gravity feed, countertop soft serve freezer. Capable of producing a variety of products including: Soft Serve, Frozen Yogurt, Ice Cream, Custards, and Sorbets. Digital control system automatically regulates and maintains consistent product quality. Refrigerated hopper and Standby Mode keeps product fresh, even overnight.

CUSTOM OPTIONS

Air Pump, Water Cooled, Heat Treat, Air Chute, Spinner (1 or 2)

ELECTRICAL SPECIFICATIONS

	Maximum Fuse Size	Min. Circuit Ampacity	Poles (P) Wires (W)
208-230/60/1	1 x 20A	1 x 14A	2P / 3W

Electrical Plug: 1x NEMA L6-20

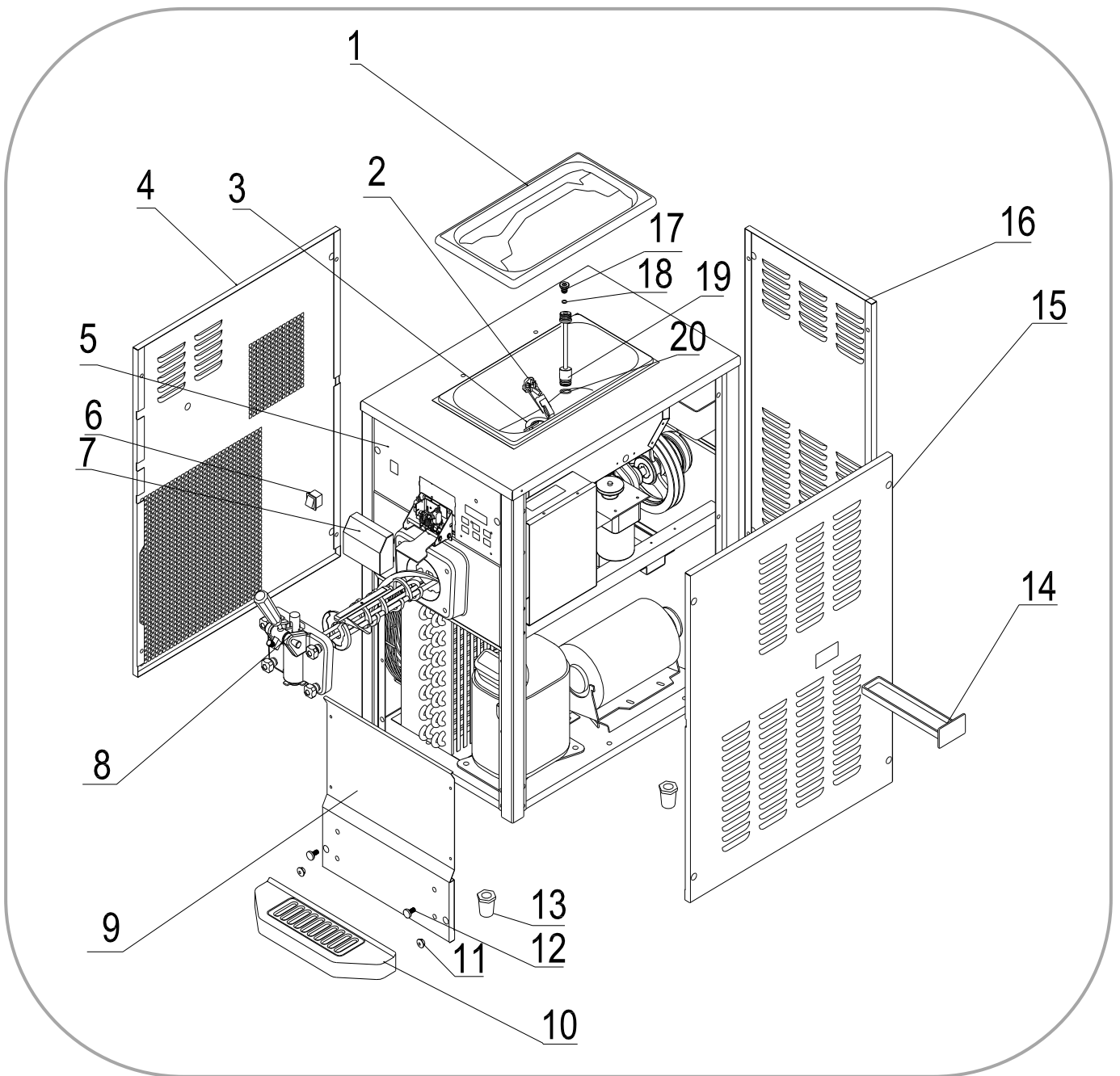
SIZE SPECIFICATIONS

	Machine		Shipping	
Weight	173 kg	384 lbs	188 kg	418 lbs
Depth (mm / in)	633*	25.0*	880	34.7
Width (mm / in)	453*	17.9*	510	20.1
Height (mm / in)	908	35.8	1080	42.6

Shipping Volume: 0.48 CBM / 17.09 CBF

** Machine Requires Minimum 6" Clearance on all sides*

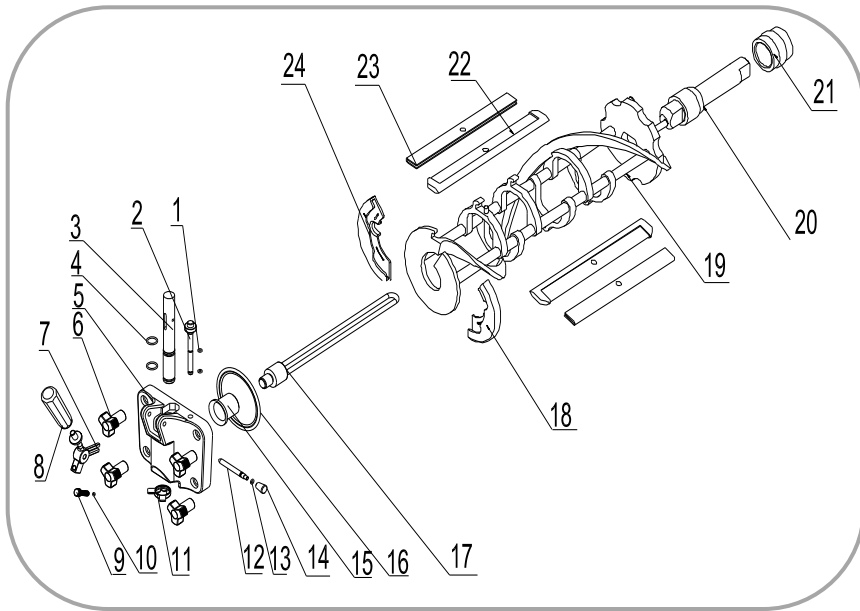
SPECS—EXTERNAL PARTS



Item	Part #	Description	Item	Part #	Description	Item	Part #	Description
1	3.4.03.01.004	Hopper Lid	9	2.3.4.17.003	Panel - Front - L	17	2.1.3.23.0001	Air Tube Cap
2	3.1.03.04.009	Low Mix Sensor	10	3.4.04.01.002	Drip Tray	18	3.4.08.01.028	O-Ring - Cap
3	2.1.1.23.0001	Agitator Blade	11	3.4.07.01.001	Bolt Cover	19	2.1.1.22.0003	Air Tube
4	2.3.4.18.004	Panel - Left	12	3.6.39.004	Drip Tray Mount	20	3.4.08.01.002	O-Ring - Air Tube
5	2.3.4.07.003	Panel - Front - U	13	3.3.05.03.001	Leg			
6	3.1.03.03.003	Power Switch	14	3.4.04.02.003	Internal Drip Tray			
7	3.4.07.07.004	Switch Cover	15	2.3.4.20.007	Panel - Right			
8	2.1.1.15.0015	Dispensing Door	16	2.3.4.13.004	Panel - Rear			

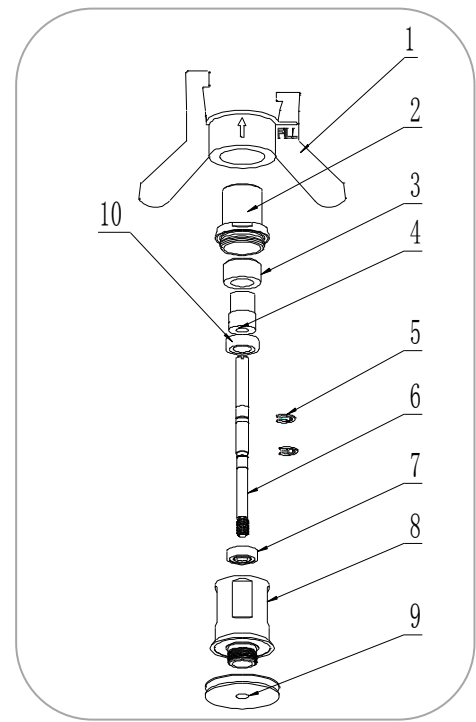
SPECS—OPERATING PARTS

Dispensing Door and Beater

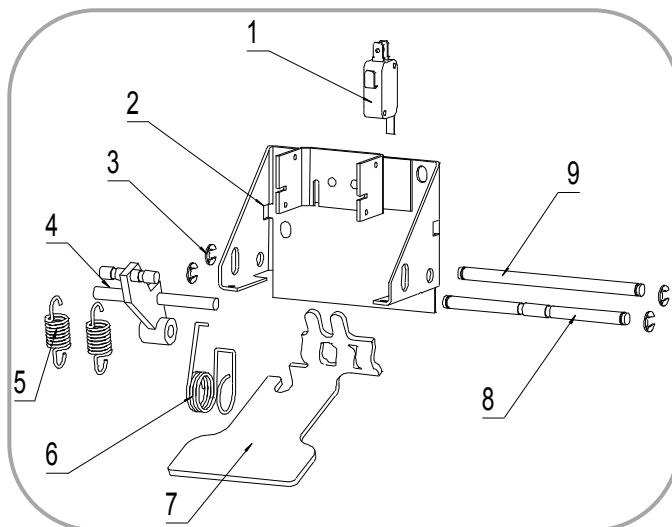


Item	Part #	Description	Item	Part #	Description
1	3.4.08.01.013	O-Ring - Prime	13	3.4.08.01.013	O-Ring - Retention
2	2.1.3.02.0015	Prime Plug	14	2.1.3.27.0025	Nut - Retention Pin
3	2.1.3.01.0005	Draw Valve	15	3.4.01.03.002	Beater Guide
4	3.4.08.01.006	O-Ring - Valve	16	3.4.08.02.003	Door Gasket
5	2.1.3.14.0004	Dispensing Door	17	2.1.1.11.0002	Beater Rod
6	3.4.05.02.007	Hand Screw	18	3.4.01.02.001	Beater Shoe - R
7	2.1.3.26.0005	Handle Seat	19	2.1.1.10.0001	Beater
8	3.4.05.01.001	Dispensing Handle	20	2.1.3.25.0002	Drive Shaft
9	3.6.39.009	Adjustment Screw	21	3.4.07.05.002	Drive Shaft Gasket
10	3.4.08.01.012	O-Ring - Screw	22	3.4.02.01.001	Scraper Blade
11	3.4.05.03.001	Star Cap	23	2.3.4.04.002	Scrape Blade Clip
12	2.1.3.27.0004	Retention Pin	24	3.4.01.01.001	Beater Shoe - L

Hopper Agitator

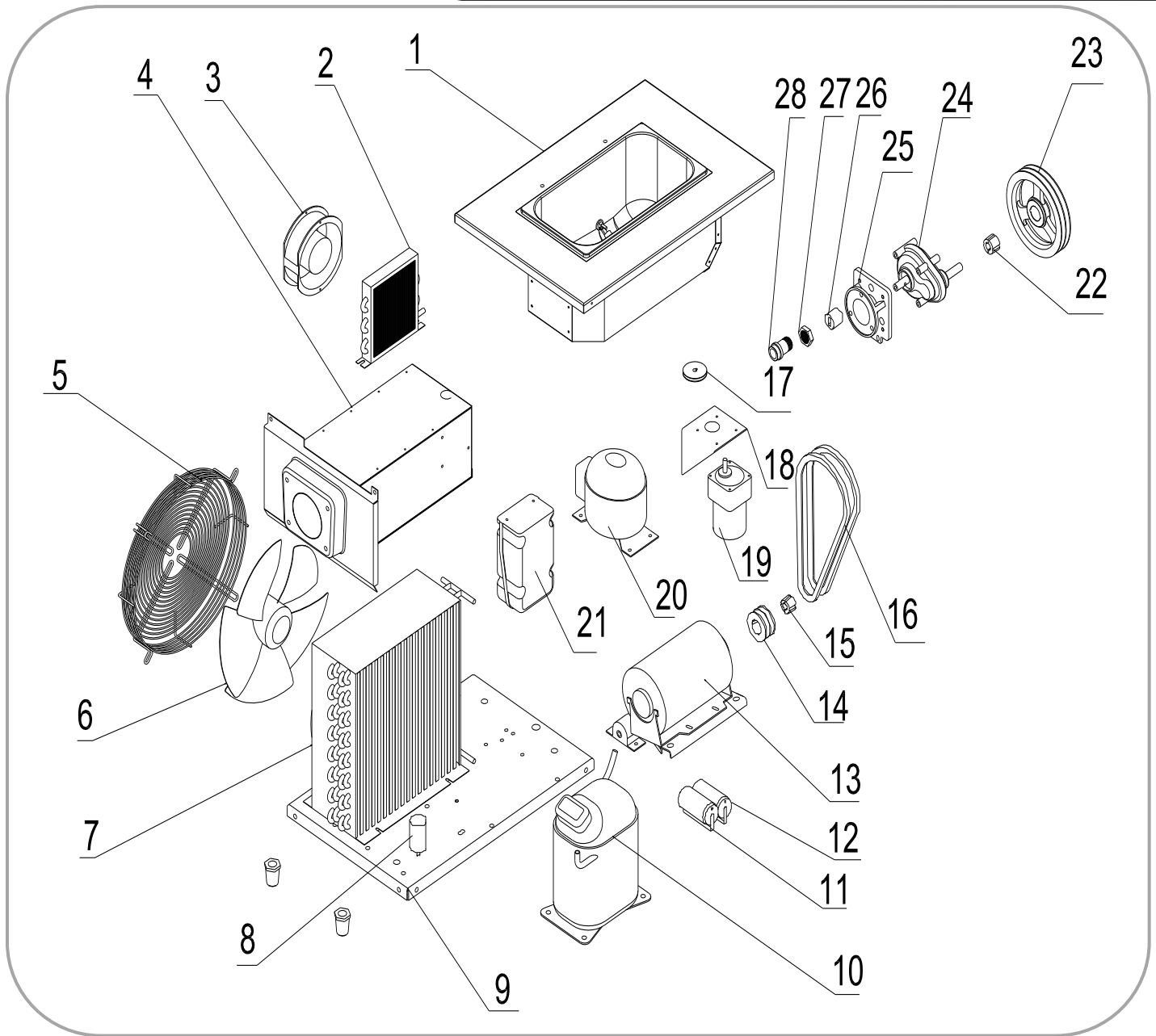


Item	Part #	Description
1	2.1.1.23.0001	Agitator Blade
2	2.1.4.02.005	HA Housing Cap
3	2.1.4.02.002	HA Main Magnet
4	2.1.4.02.003	HA Shaft Magnet
5	3.6.34.003	C-Clip
6	2.1.3.42.0002	Drive Shaft
7	3.3.02.07.004	HA Bearing - Lower
8	2.1.4.02.001	HA Housing
9	2.1.4.02.015	Pulley - HA
10	3.3.02.07.003	HA Bearing - Upper

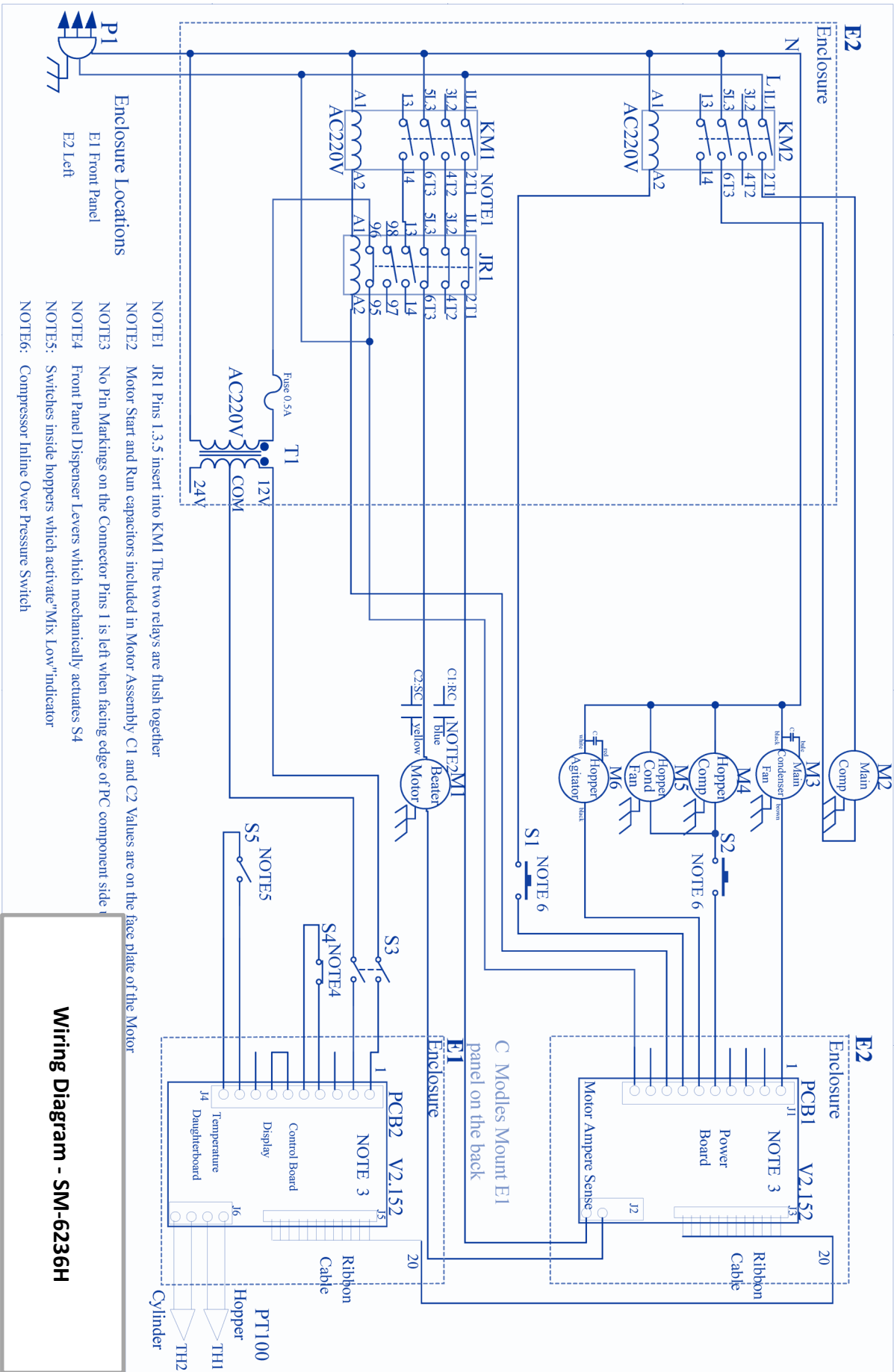


Item	Part #	Description
1	3.1.03.01.004	Switch - Draw
2	2.1.1.19.0010	Switch Mount
3	3.6.34.002	C-Clip - #6
4	2.1.1.19.0006	Draw Switch Lever
5	3.6.02.002	Spring - Draw
6	3.6.01.001	Spring - Return - L
7	2.1.4.05.009	Draw Arm - L
8	2.1.4.05.001	Retention Pin - F
11	2.1.4.05.002	Retention Pin - R

SPECS—INTERNAL PARTS



Item	Part #	Description	Item	Part #	Description	Item	Part #	Description
1	2.1.1.03.0045	Hopper Assembly	11	3.1.02.22.009	Capacitor - Running	21	3.2.01.04.004	Start Component
2	3.2.02.01.001	Condenser - Aux	12	3.1.02.22.061	Capacitor - Start	22	3.3.04.01.005	Bushing - 1008
3	3.2.03.01.001	Fan Motor - Aux	13	3.3.01.05.003	Motor - 900W	23	3.3.04.02.007	Pulley - 182x2-1008
4	2.1.1.06.0038	Cylinder Assembly	14	3.3.04.02.001	Pulley - 63x2-1008	24	3.3.02.01.002	Gear Box
5	3.2.03.04.001-1	Fan Cover	15	3.3.04.01.005	Bushing - 1008	25	2.1.3.15.0003	Gear Box Mount
6	3.2.03.04.001	Fan Motor - Main	16	3.3.03.01.005	Belt - XPA1132	26	3.3.02.04.002	Drive Coupling
7	3.2.02.01.005	Condenser - Main	17	3.3.04.04.008	Pulley - HA - 34mm	27	3.3.02.02.010	Nut - RS Bearing
8	3.2.03.04.001-2	Capacitor - Fan	18	2.3.4.45.007	Bracket - HA	28	3.3.02.02.002	Rear Shell Bearing
9	2.2.4.01.0004	Chassis	19	3.3.01.01.001	Agitator Motor			
10	3.2.01.02.005	Compressor - Main	20	3.2.01.01.002	Compressor - Aux			



Item	Part #	Description	Item	Part #	Description	Item	Part #	Description
M1	3.3.01.05.003	Motor - 900W	M6	3.3.01.01.001	Agitator Motor	PC1	2.2.1.01.0007	Power Board
M2	3.2.01.02.005	Compressor - Main	JR	3.1.01.02.011	Thermal Relay	PC2	2.2.1.01.0004	Control Board
M3	3.2.03.04.001	Fan Motor - Main	KM	3.1.01.01.010	Contactors	S1/2	3.2.04.06.004	Pressure Switch
M4	3.2.01.01.002	Compressor - Aux	T	3.1.01.04.007	Transformer	S3	3.1.03.03.003	Power Switch
M5	3.2.03.01.001	Fan Motor - Aux	TH	3.1.02.13.020	Thermostat	S4	3.1.03.01.004	Draw Switch

