

GSTC30-2S 32" Two Well Gas Hot Food Steam Table with Enclosed Base

FEATURES

- Removable 1/2" thick poly cutting board
- Stainless steel cabinet body
- 2 Powerful Jet burners
- Sliding doors with handle
- Legs included, casters optional
- Fiberglass insulation between wells
- Gas regulator included
- Independent heat controls
- Built-in water drain
- Sealed well design for water heat



- cETLus
 - ETL-Sanitation
- Certified to NSF Standard



Angled Sneeze Guard

- 32" Angled Sneeze Guard
- Heavy Duty Stainless Steel Frame
- Acrylic Shield
- Prevents Contamination

Protect your food while still allowing your customers to see your product! Stainless steel frame and acrylic shield will protect your merchandise on 3 sides.



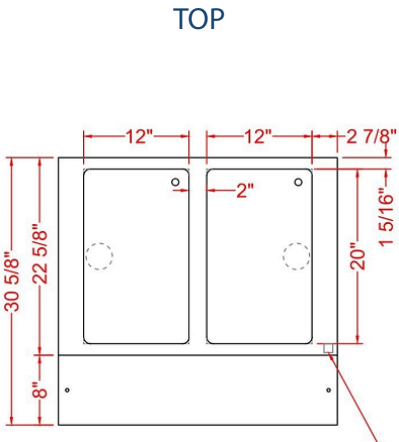
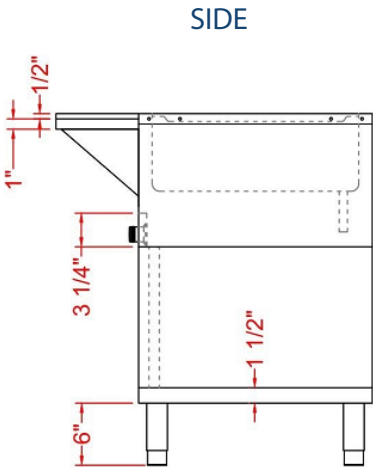
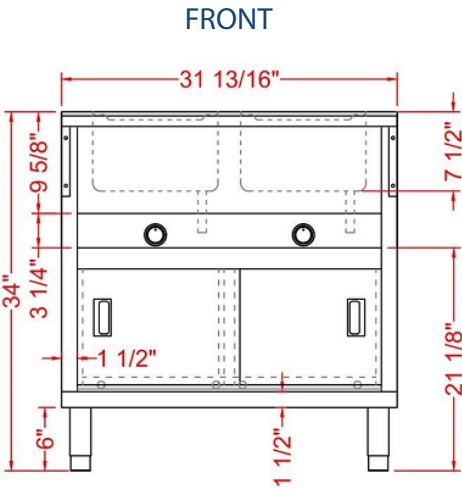
USR Brands is a US supplier of premium quality commercial cooking, refrigeration and food preparation equipment. Our aim is simple. Produce industry-leading commercial restaurant equipment at reasonable prices, and back it all up with an easy to understand, no nonsense warranty that people can count on.

TECHNICAL DATA

MODEL	Exterior Dimension	Number of Well(s)	Number of Burner(s)	BTU per Burner	Total BTU	Well Type	Body Type
GSTC30-2S	31.8" x 30.6" x 34.4"	2	2	3, 500BTU	7,000BTU	Sealed Well	Cabinet

TECHNICAL DRAWING

SKU: GSTC30-2S
MFR ITEM #:



With Sneeze Guard

