

Project:	Quantity:
Model #:	Approval:

*For Commercial Use Only*

**ESTC60-4S-110 60" Four Sealed Well Electric Hot Food Steam Table with Enclosed Base - 110V**



**FEATURES**

- Removable 1/2" thick poly cutting board
- Stainless steel construction
- Stainless steel heating element
- Enclosed base and sliding doors included
- Legs included, casters optional
- Fiberglass insulation between wells
- Adjustable stainless steel feet
- Independent heat controls
- Built-in water drain
- Sealed well design for water heat

- Cabinet assembly required

• cETLus  
• ETL-Sanitation  
Certified to NSF Standard




Intertek Intertek

**Angled Sneeze Guard**



- Sneeze guard installation required

- 60" Angled Sneeze Guard
- Heavy Duty Stainless Steel Frame
- Acrylic Shield
- Prevents Contamination

Protect your food while still allowing your customers to see your product! Stainless steel frame and acrylic shield will protect your merchandise on 3 sides.

**U**SR Brands is a US supplier of premium quality commercial cooking, refrigeration and food preparation equipment. Our aim is simple. Produce industry-leading commercial restaurant equipment at reasonable prices, and back it all up with an easy to understand, no nonsense warranty that people can count on.

*For Commercial Use Only*

**TECHNICAL DATA**

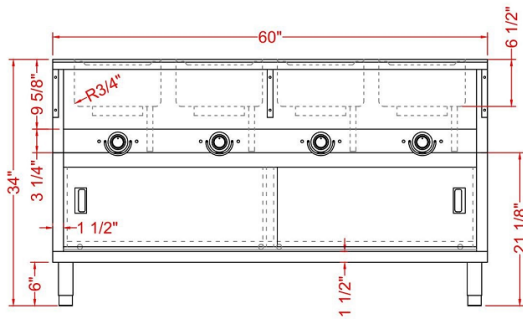
MODEL	Exterior Dimension	Number of Well(s)	Electrical	Plug Type	Power	Well Type	Body Type
ESTC60-4S-110	60" x 30.6" x 34.4"	4	110v/60hz/1ph	NEMA 5-30P	2000w	Sealed Well	Cabinet

**TECHNICAL DRAWING**

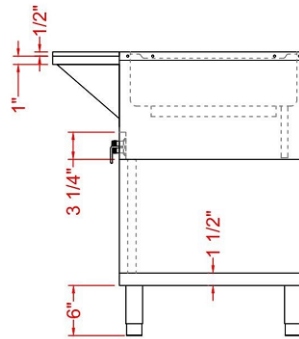
SKU: ESTC60-4S-110



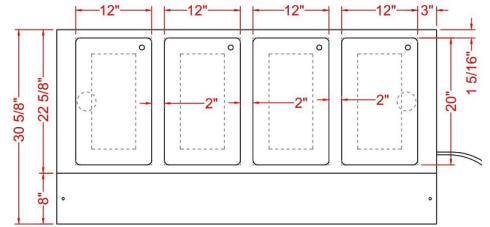
FRONT



SIDE

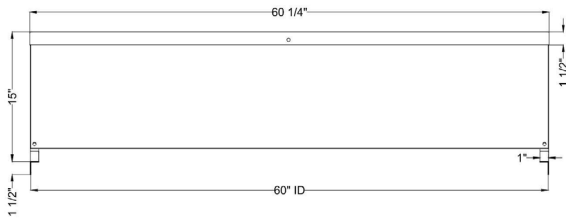


TOP

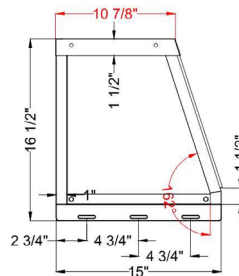


**Angled Sneeze Guard**

FRONT



SIDE



TOP

