

Project:	Quantity:
Model #:	Approval:

For Commercial Use Only

ESTC30-2S Two Well Electric Hot Food Steam Table with Enclosed Base - 120V, 1000W



FEATURES

- Removable 1/2" thick poly cutting board
- Stainless steel construction
- Stainless steel heating element
- Enclosed base and sliding doors included
- Legs included, casters optional
- Fiberglass insulation between wells
- Adjustable stainless steel feet
- Independent heat controls
- Built-in water drain
- Sealed well design for water heat

- Cabinet assembly required

• cETLus
• ETL-Sanitation
Certified to NSF Standard



Intertek Intertek

Angled Sneeze Guard



- 32" Angled Sneeze Guard
- Heavy Duty Stainless Steel Frame
- Acrylic Shield
- Prevents Contamination

Protect your food while still allowing your customers to see your product! Stainless steel frame and acrylic shield will protect your merchandise on 3 sides.

- Sneeze guard installation required

USR Brands is a US supplier of premium quality commercial cooking, refrigeration and food preparation equipment. Our aim is simple. Produce industry-leading commercial restaurant equipment at reasonable prices, and back it all up with an easy to understand, no nonsense warranty that people can count on.

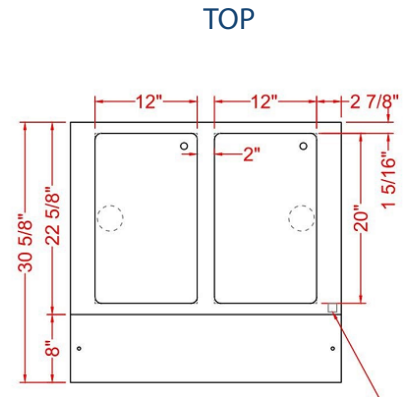
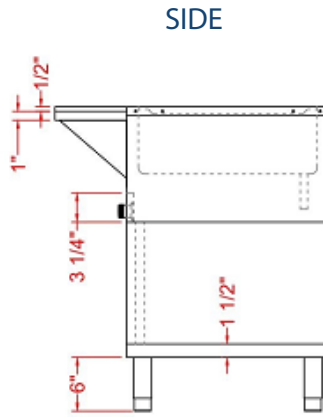
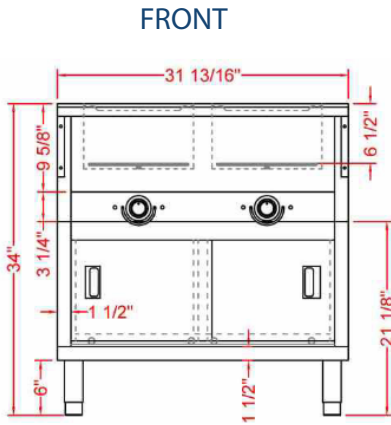
TECHNICAL DATA

MODEL	Exterior Dimension	Number of Well(s)	Electrical	Plug Type	Power	Well Type	Body Type
ESTC30-2S	31.8" x 30.6" x 34.4"	2	120v/60hz/1ph	NEMA 5-15P	1000w	Sealed Well	Cabinet

TECHNICAL DRAWING

SKU: ESTC30-2S

MFR ITEM #:



With Sneeze Guard

