

Project:	Quantity:
Model #:	Approval:

*For Commercial Use Only*

## 74" Five Well Electric Hot Food Steam Table with Enclosed Base - 208/240V, 3750W

### FEATURES

- Removable 1/2" thick poly cutting board
- Stainless steel construction
- Stainless steel heating element
- Enclosed base and sliding doors included
- Legs included, casters optional
- Fiberglass insulation between wells
- Adjustable stainless steel feet
- Independent heat controls
- No plumbing or drain needed
- Open well design for water (spillage pans sold separately) or dry heat



- cETLus Listed
  - ETL Sanitation Listed
- Conforms to UL & NSF Standards



### Optional Sneeze Guard

- Stainless steel construction
- Protects food on 3 sides
- Easy to clean
- Prevents contamination

Protect your food while still allowing your customers to see your product! Stainless steel frame are easy to clean and built to last.



**U**SR Brands is a US supplier of premium quality commercial cooking, refrigeration and food preparation equipment. Our aim is simple. Produce industry-leading commercial restaurant equipment at reasonable prices, and back it all up with an easy to understand, no nonsense warranty that people can count on.

For Commercial Use Only

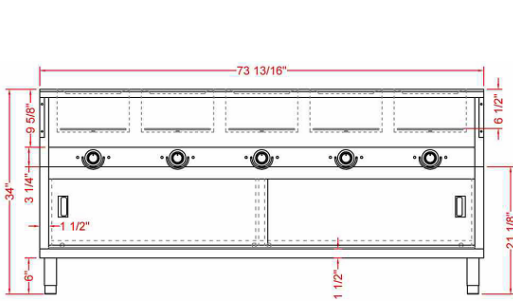
TECHNICAL DATA

MODEL	Exterior Dimension	Number of Well(s)	Electrical	Plug Type	Power	Well Type	Body Type
ESTC74-50	74" x 30.6" x 34.4"	5	208~240v/60hz/1ph	NEMA 6-20P	3750w	Open Well	Cabinet

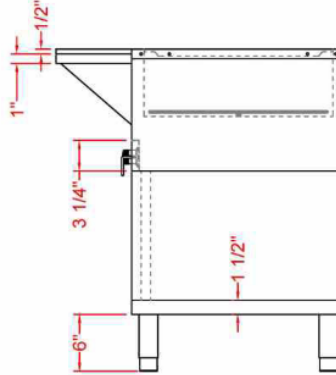
TECHNICAL DRAWING

SKU: ESTC74-50  
MFR ITEM #: EST-50W-CBSD

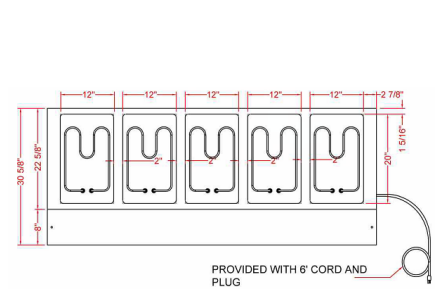
FRONT



SIDE

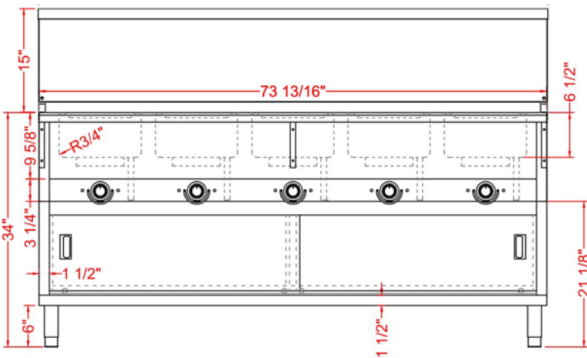


TOP

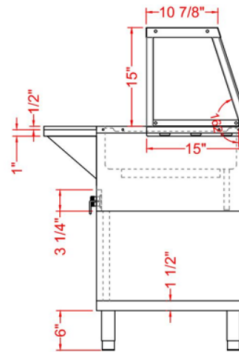


Optional Sneeze Guard

FRONT



SIDE



TOP

