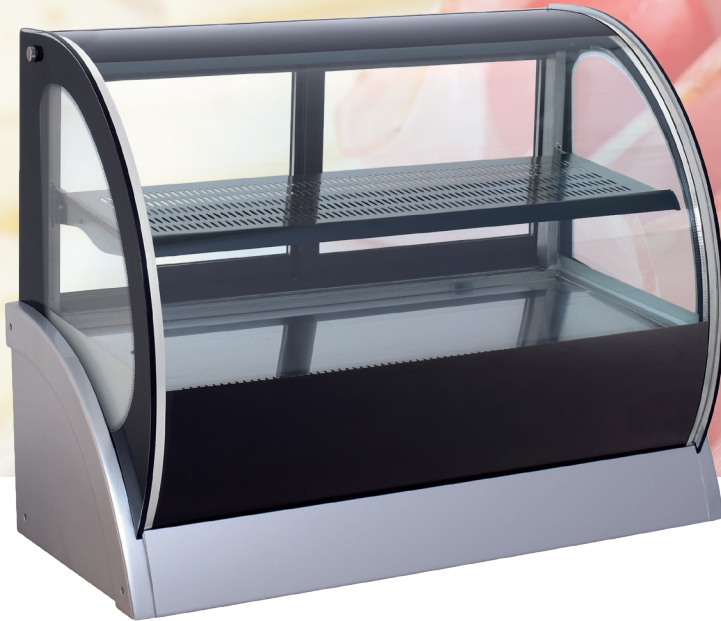
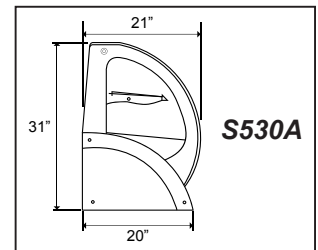


REFRIGERATED SHOWCASES



S530A



Countertop Cold Deli Showcases

- #304 Stainless Steel Exteriors & Interiors.
- Fan blowing system.
- High quality digital temperature controller.
- Middle or High back pressure hermetic compressor.
- Automatic defrost system.



ITEM NUMBER	31406	31815	31818
Model	S530A	S540A	S550A
Temperature Range	2°C ~ 8°C / 35.6°F ~ 46.4°F	2°C ~ 8°C / 35.6°F ~ 46.4°F	2°C ~ 8°C / 35.6°F ~ 46.4°F
Capacity (L)	115	155	200
Power (W)	387	453	479
Current	4.82A	4.58A	4.84A
Refrigerant	R134a, 185g	R134a, 270g	R134a, 300g
# of Shelves	2	2	2
Dimensions (DWH)	21.25" x 35.5" x 31"	21.25" x 47.25" x 31"	21.25" x 59" x 31"
Interior Dimensions (DWH)	15.75" x 35.5" x 14.5"	15.75" x 47.25" x 14.5"	15.75" x 59" x 14.5"
Packaging Dimensions	39.75" x 25.40" x 40"	51.75" x 25.40" x 40"	63.40" x 25.40" x 40"
Weight	95 kg / 209.5 lbs	105 kg / 231.5 lbs	120 kg / 264.5 lbs

Mississauga, Ontario, Canada

Niagara Falls, New York, USA

Tel: (905) 828-0234 Toll-Free: 1-800-465-0234 Fax: (905) 607-0234 Email: sales@omcan.com

www.omcan.com