

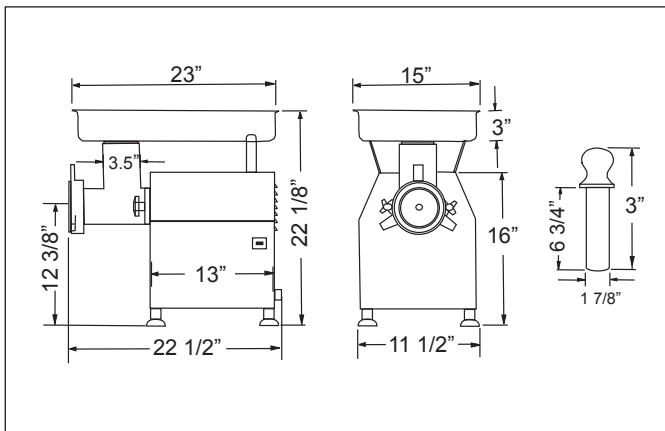


## MODEL A32

Heavy-duty fan-cooled counter style meat grinder. The complete head, body, and feed pan is manufactured from stainless steel. The machine conforms to CE hygiene and regulation standards. Ideally designed for butcher shops, food stores, and restaurants. 3 1/4" throat opening.



## DIMENSIONS



## SPECIFICATIONS

<b>Model</b>	<b>A32</b>
<b>Horsepower</b>	2.7
<b>Head Size</b>	32
<b>Throat Opening</b>	3.25"
<b>Amperage</b>	13
<b>Output</b>	12 lbs / min.
<b>Electrical</b>	220V/60/1
<b>Weight</b>	112 lbs.
<b>Packaging Weight</b>	132 lbs.
<b>Dimension (LWH)</b>	20.5" x 11.5" x 22.125"
<b>Packaging Dimension</b>	23.5" x 25.25" x 19.5"
<b>Item #</b>	11033

Mississauga, Ontario, Canada

Niagara Falls, New York, USA

Tel: (905) 828-0234 Toll-Free: 1-800-465-0234 Fax: (905) 607-0234 Email: sales@omcan.com

[www.omcan.com](http://www.omcan.com)