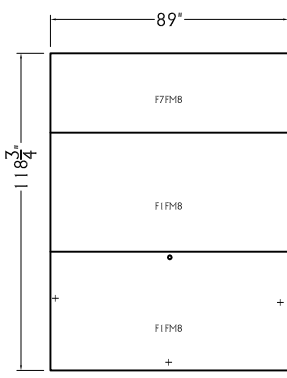
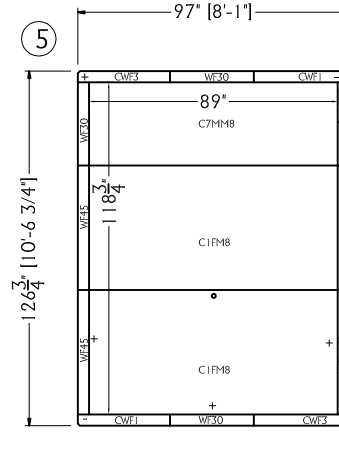
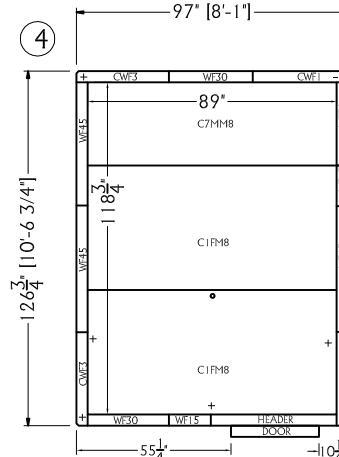
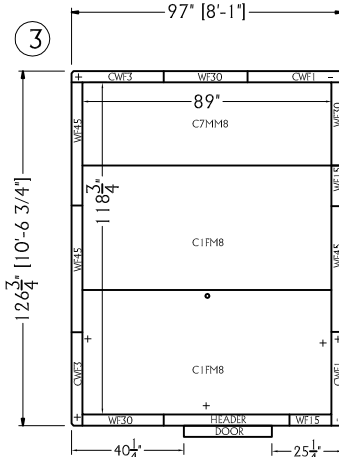
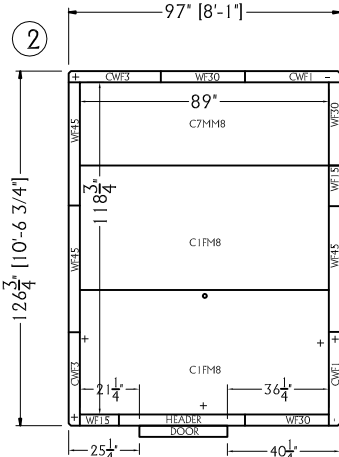
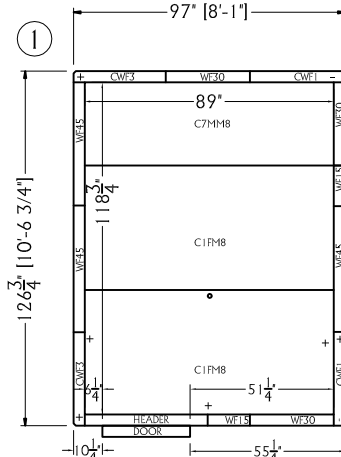


CEILING PANELS

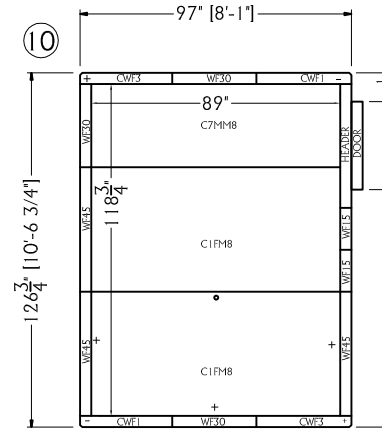
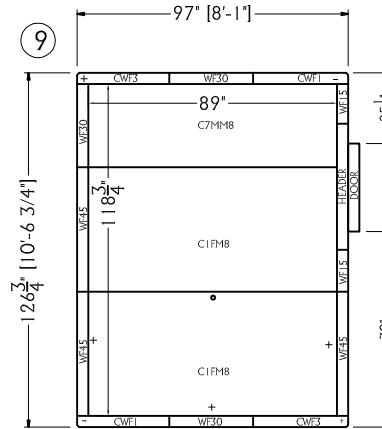
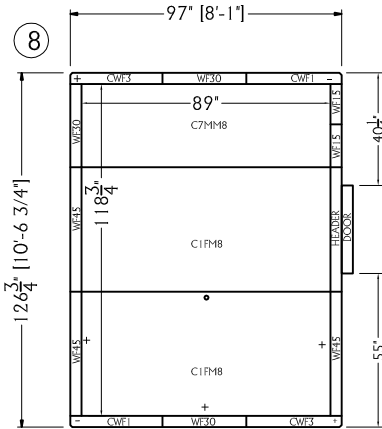
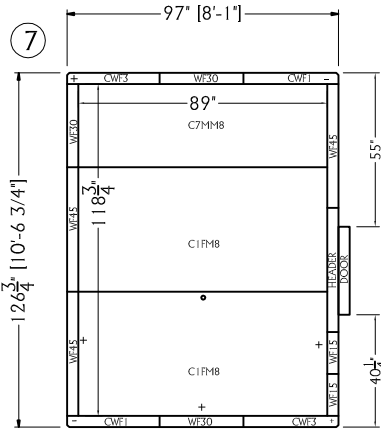
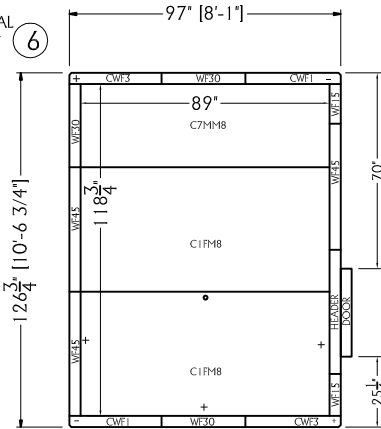
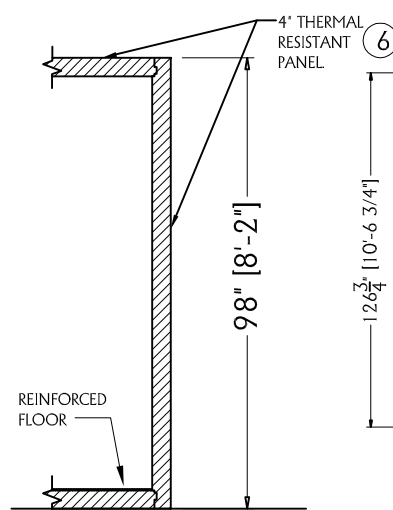


FLOOR PANELS
(REINFORCED)



POSSIBLES DOOR PLACEMENTS

FREEZER WITH FLOOR



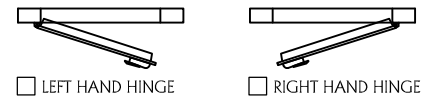
REMARKS

- HEIGHT = 8'-2"
- THICKNESS = 4"
- REINFORCED FLOOR PANELS
- DOOR OPENING : 31 1/2" W x 73" H

NOTES:

- 1.- FLOOR MUST BE WELL LEVELLED
- 2.- CHECK RIGHT POSITION OF CORNER PANELS
- 3.- PLEASE VERIFY ALL DIMENSIONS

DOOR SELECTED



NOTICE

This is an approval drawing. Fabrication will not begin until the engineering dept. receives the drawing dated and signed as approved.

APPROVED BY: _____

DATE APPROVED: _____

THANK YOU - Engineering Dept.

FAX: 305-828-0977



THIS DOCUMENT IS PROPERTY OF MR. WINTER, INC. AND IS FOR THE SOLE USE OF THE INTENDED RECIPIENT(S). IF YOU ARE NOT THE ADDRESSEE INDICATED IN THIS DOCUMENT (OR RESPONSIBLE FOR THE DELIVERY OF THE DOCUMENT TO SUCH PERSON), YOU MAY NOT COPY OR DELIVER THIS DOCUMENT TO ANYONE. IN SUCH CASE, YOU SHOULD DESTROY THE DOCUMENT AND NOTIFY US IMMEDIATELY. ANY UNAUTHORIZED DISCLOSURE OR DISTRIBUTION IS PROHIBITED.

JOB No.: MRWINTERINC	CUST. P.O. No.: 8X10X98
WINTELLIGENT	SCALE: N.T.S.
FREEZER WITH FLOOR	
FINISH: SMOOTH SILVER FIN.	
8'-1" x 10'-6 3/4" x 8'-2" (H)	NSF LISTED
# OF PANELS: XX	SQ. FT.: XXX