

SpaceMaker™ iT0900 Ice Cube Machine

Models

IDT0900W-261V

IYT0900W-261V



IDT0906W-261V
As shown with SeaKing bin (recommended)
(Ice Machine and Bin sold separately)

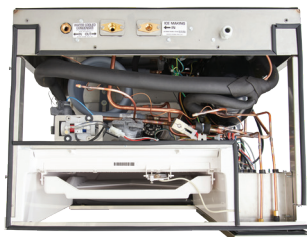
Marine Ice Machine Features

The Indigo®NXT SpaceMaker™ puts the utilities connection through the top panel allowing the machine to come in contact with the back and side walls saving valuable space in the galley.

- Standard Indigo NXT feature set with internal communication system that continually monitors refrigeration and sub-system controls 24/7.
- Front facing evaporator allows access to the Food zone for easy cleaning without removing the top lid.
- Isolation switch immediately cuts power to the entire unit.
- Completely sealed unit, top, front, back, top and sides.
- Meets USPHS and NSF specifications
- Top and Side panels designed to be removable even when fixed to the bulkhead, allowing easy access for servicing

Warranty

- 5-year parts-and-labor on evaporator.
- 5-year parts and 3-year labor on compressor.
- 3-year parts-and-labor on all other components.



Top access ports



Easy access control panel



SeaKing bin (recommended)

Ice Shape



Half Dice
3/8" x 1 1/8" x 7/8"
(.95 x 2.86 x 2.22 cm)



Dice
7/8" x 7/8" x 7/8"
(2.22 x 2.22 x 2.22 cm)





Indigo®NXT SpaceMaker™ iT0900 Ice Cube Machine

(A) Electrical Entrance (2) Options
 (B) 3/8" (0,95 cm) F.P.T. Ice Making Water Inlet
 (C) 1/2" (1,27 cm) F.P.T. Ice Making Water Drain
 (D) 1/2" (1,27 cm) F.P.T. Water Condenser Outlet
 (E) 3/8" (0,95 cm) F.P.T. Water Condenser Inlet
 (F) 1/2" (1,27 cm) Auxiliary Base Drain Socket

Installation Note: Minimum 2-3/4" clearance at back.

| Series iF0900 | | Ice Machine Electric | | Ice Machine Operating Limits | |
|-----------------------------|-----------------|----------------------|-----------|------------------------------|----------------------------|
| IDT0900W | Dice Size | Electricity | 208-230 v | Ambient Temperature | 40 to 110 F (4.4 to 43.3C) |
| IYT0900W | Half Dice Size | Phase | Single | Potable Water Temp. | 40 to 90 F (4.4 to 32.2C) |
| 26.5" H x 30.0" W x 24.5" D | | Cycle | 60 Hz | Water Pressure | Min 20 psi (137.9 kPA) |
| 76.2 H x 62.2 W x 67.3 D cm | | Max fuse size | 15 amp | | Max . 80 psi (551.1kPA) |
| Approx. Net Wt. | 200 lbs/90.7 kg | Min Ampacity | 8.8 A | Condenser Water | Min 20 psi (137.9 kPA) |
| Approx. Gross Wt. | 215lbs/97.5 kg | Machine Rating | 1195.2 W | | Max. 276 psi (1,902.95kPA) |

| Ice Production 24hours | | | | | | | | |
|------------------------|-----------|------------------|--------|------------------|--------|-----------------|-----------------|--------|
| Model | Ice Shape | 70 Air/50F Water | | 90 Air/70F Water | | kWh/100 lbs ice | gal/100 lbs ice | |
| IDT0900W | dice | 780 lbs | 354 kg | 665 lbs | 302 kg | 4.02 | 19 Gal. | 71.9 L |
| IYT0900W | half-dice | 785 lbs | 356 kg | 665 lbs | 302 kg | 4.02 | 19 Gal. | 71.9 L |

Water Cooled Condenser Water usage /100 lbs /45.4 kgs. of ice 135 gal / 511 L

This product is hermetically sealed and contains fluorinated greenhouse gas R410a.