



IRT-14



Special stainless steel alloy vessel withstands strong salt concentrations.

FEATURES

- Stainless steel exterior.
- Stainless steel vessel and hinged cover.
- Set of four casters, two with brakes.
- 17 1/2 gallon water capacity.
- Three tube fired burners, 105,000 BTU (31 KW)
- Tank overflow protection diverts water to common drain outlet.
- Temperature limit switch safety shuts off all gas flow if the temperature exceeds the higher limit.
- Auto-fill with rapid fill bypass.
- On/Off switch located on front panel.
- Pre-set Thermostat at 200 degrees.
- Integrated Gas control valve acts as a manual pilot valve, gas filter, regulator and automatic main valve.
- Moisture protection for electronic controls.
- Large overflow drain.
- Bulk rack for large bags.
- Industrial bag holder for smaller servings.

TUBE FIRED BURNERS

- Even heat is delivered through a large oval heat exchanger tube.
- A unique baffle design efficiently transfers heat into the water throughout the entire vessel.
- The tube design and water wash system create a natural convection action to recirculate fresh hot water into the vessel.
- Available with a manual timer or computer controls with multiple time feature for different product drop times.
- Millivolt temperature control circuit.
- 100% safety shut-off.

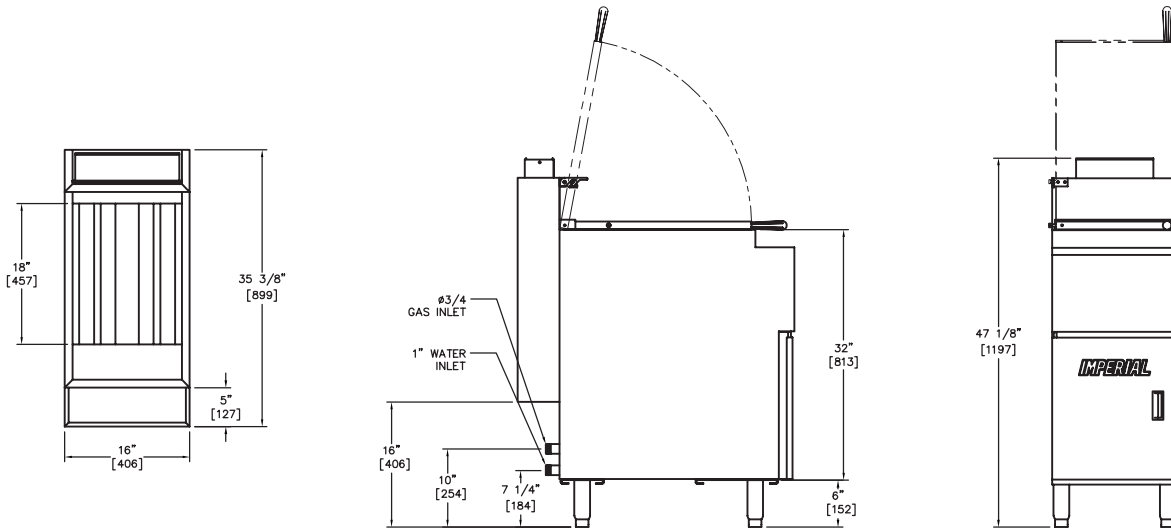
STAINLESS STEEL VESSELS

- Vessel is 16 gauge 317 alloy stainless steel. This "higher-than-marine-grade" withstands stronger concentrations of salt in the water for faster pasta preparation.
- Vessel tubes and sides are robotically welded stainless steel to virtually eliminate leaks.
- Recessed bottom facilitates draining, slants toward the drain.
- 1-1/4" (32 mm) full port drain valve empties vessel quickly and safely



GAS

PRO SERIES | CUSTOM



RINSE STATION

MODEL	WATER CAPACITY	GAS OUTPUT BTU	GAS OUTPUT KW	BURNERS	SHIP WEIGHT KG	SHIP WEIGHT LBS
IRT-14	12 GALLONS (45 L)	105,000	31	3	122	270

MODEL	DIMENSIONS	CRATED DIMENSIONS
IRT-14	16-1/2" W X 35-3/8" D X 47-1/8" H 419MM X 914MM X 1219MM	18-1/2" W X 37-3/8" D X 49-1/8" H 470MM X 965MM X 1270MM

EXTERIOR FEATURES

- Stainless steel front, door, sides and vessel.
- Welded and polished stainless steel seams.
- Full bottom chassis provide structural support.
- Plate mounted 6" (152 mm) heavy duty casters.
- One year parts and labor warranty.
- Limited warranty on vessel, stainless steel vessel is five years pro-rated.

MANIFOLD PRESSURE		
NATURAL GAS	PROPANE GAS	MANIFOLD SIZE
4.0" W.C.	11.0" W.C.	3/4" (19 MM)

CLEARANCE

For use only on non-combustible floors. Legs or casters are required for non-combustible floors; or 2" (51 mm) overhang is required when curb mounted. Provide 0" clearance from non-combustible surfaces and 6" (152 mm) from combustible surfaces.

