



Project: \_\_\_\_\_

Quantity: \_\_\_\_\_

Model # : \_\_\_\_\_

Approval: \_\_\_\_\_

*For Commercial Use Only*

## 2200 Lb. Electric Counter Balanced Forklift Stacker with 98” Lift Height, 110V

### STANDARD FEATURES

- Standard 110V Electrical
- Powered dual mast fork stacker
- Maximum fork height: 98"
- 24V /150 Ah battery
- Polyurethane steering wheels
- 2200 lbs loading capacity
- 48" length forks
- Fork adjust from 13" to 26"
- 1.8kw DC lifting driving motor
- Anti-slip foldable pedal
- Electromagnetic brake
- Emergency stop button
- Ergonomically handle



USR Brands, Inc.

Phone: 800-764-1172 | [www.usrbrands.com](http://www.usrbrands.com) | [sales@usrbrands.com](mailto:sales@usrbrands.com)

Rev. 08-2022

Page 324



Project: \_\_\_\_\_

Quantity: \_\_\_\_\_

Model #: \_\_\_\_\_

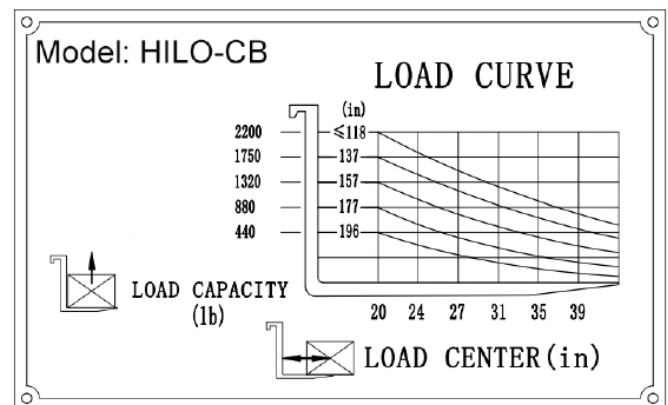
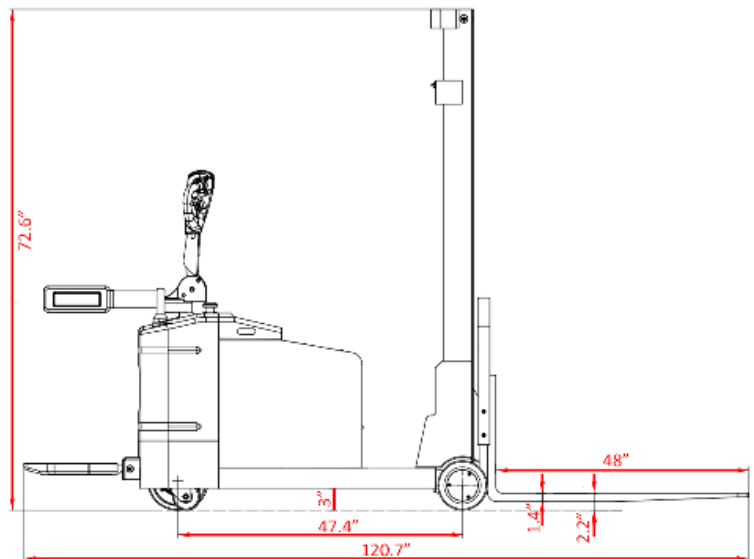
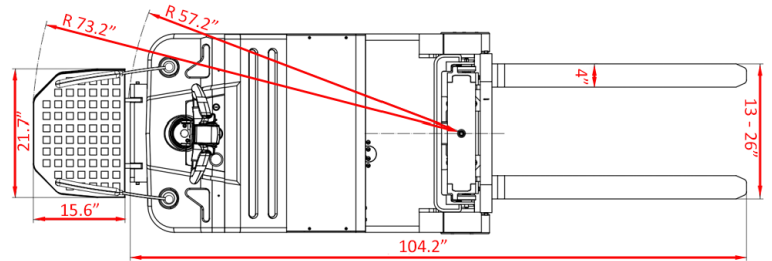
Approval: \_\_\_\_\_

For Commercial Use Only

## TECHNICAL DATA

Model (MFR ITEM #)	HILO-CB (CPDB)	Unit
Dive Mode	Electric	/
Driving Mode	Stand/Step	/
Rated Load Capacity	2200	lb.
Load Center Distance	19.7	Inch
Wheel Material	Polyurethane	PU
Carrying Wheel	Φ8.3 * 3.3	Inch
Driving Wheel	Φ9.8 * 3	Inch
Max. Lifting Height	98	Inch
Lowered Mast Height	72.6	Inch
Extended Mast Height	120.8	Inch
Fork Length	48	Inch
Single Fork Width	4	Inch
Overall Fork Width	13 - 26	Inch
Lowered Fork Height	2.2	Inch
Overall Width	33.5	Inch
Overall Length	120.7 (include 15.6" pedal)	Inch
Turning Radius	57.2	Inch
Driving Speed. Laden	5	km/h
Lifting Speed. Laden	70	mm/s
Climbing Gradient	6	Degree
Brake Mode	Electromagnetic Brake	/
Battery Voltage/Rated Capacity	24 / 150	v/ah
Driving Motor (AC)	1.8	kw
Lifting Motor (DC)	2.2	kw
Net Weight	4186	lb.

## TECHNICAL DIAGRAM



USR Brands, Inc.

Phone: 800-764-1172

www.usrbrands.com

sales@usrbrands.com

Rev. 08-2022

Page 325