



DUKERS
Quality Commercial Refrigeration



REACH IN DUAL (Refrigerator and Freezer)

D83ARF

Top Mounted / 3-Solid Door



i TECHNICAL SPECIFICATIONS

Voltage/Frequency	115V/60Hz
Refrigerant	R290
Type of Defrost	Automatic
Interior Material	Stainless Steel
Exterior Material	Stainless Steel
Temperature Range °F	Freezer: 0 ~ -8°F Refrigerator: 33 ~ 41°F
Compressor Power (HP)	1/4 + 1/2
Nema Config.	NEMA5-15P



PRODUCT FEATURES

- The compressor is mounted in the top and placed in the coolest possible area; this makes it easily accessible for servicing.
- Digital temperature controls with LED display for precise adjustment and automatic defrosting system.
- One section freezer, two section refrigerator
Freezer: 0 ~ -8°F, Refrigerator: 33 ~ 41°F
- Self closing doors with stay open feature.
- R290 Natural Refrigerant promotes faster cool down and efficient energy consumption.
- Epoxy coated wire shelves.
- Stainless steel interior & exterior, sealed interior floors, and rounded cabinet corners for easy cleaning.
- High quality coated stainless adjustable shelves prevent peel and rust.
- Lifetime warranty on hinges.
- Adjustable front locking casters.



HIGH QUALITY STAINLESS STEEL & ROBUST DESIGN



DUKERS

Los Angeles | San Francisco | Dallas
Houston | Florida | Chicago | New Jersey

1-800-931-8628

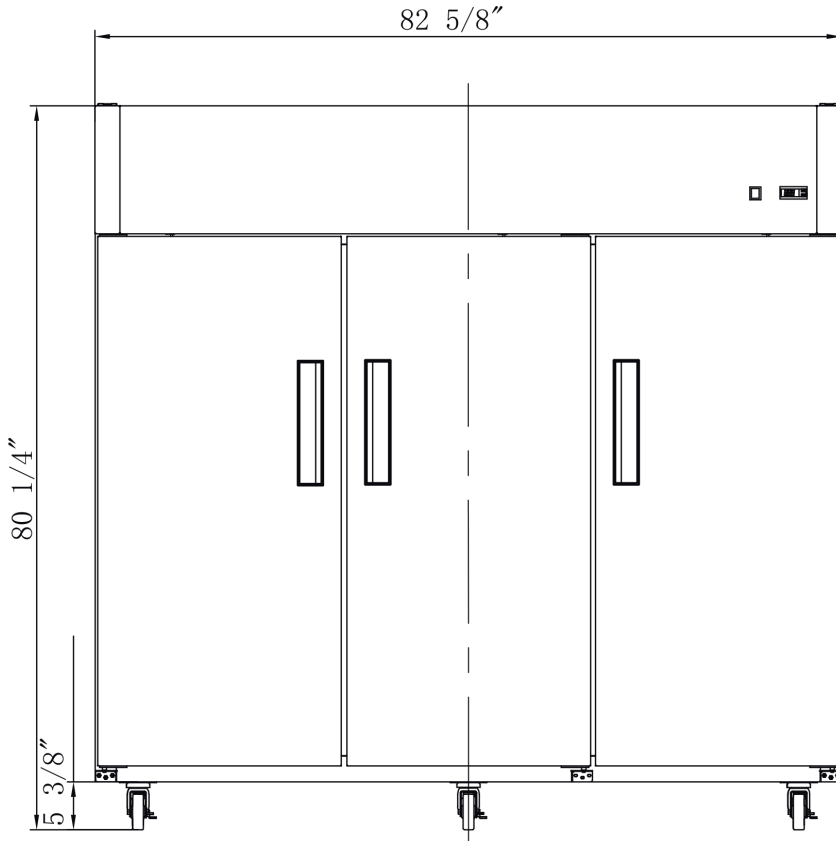
info@dukersusa.com

www.DukersUSA.com

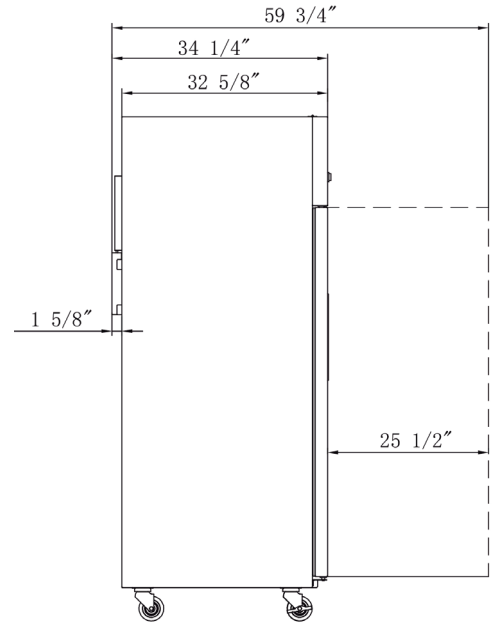
DETAILS & SPECIFICATIONS

D83ARF

Front View



Side View



MODEL D83ARF

Rated Voltage	115V
Rated Frequency	60Hz
Total Input Power	500W + 800W
Total Current	5A + 9A
Total Capacity	42.65 + 19.95 cu ft
Climatic Category	4-5
Protection Type	I
Design Pressure High Side	300 PSIG
Design Pressure Low Side	150 PSIG
Insulation Blowing Gas	C-Pentane
Refrigerant	R290/4.23 + 3.7 oz

MODEL	EXTERNAL DIMENSION WXDXH (INCHES)	PACKAGING DIMENSION WXDXH (INCHES)	PRODUCT NET WEIGHT	# OF SHELVES	40HQ CONTAINER CERT.
D83ARF	82 5/8 x 34 1/4 x 83 5/8	84 1/4 x 35 3/8 x 84 3/4	700 lbs	12	13



Los Angeles | San Francisco | Dallas
Houston | Florida | Chicago | New Jersey

1-800-931-8628

@ info@dukersusa.com

www.DukersUSA.com