

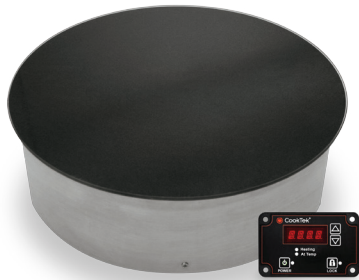


Project _____

Item No. _____

Quantity _____

SILENZIO™ (RD) Drop-in Round Buffet Warmer



FEATURES

- Models available in 650 watts
- Drop-in design with aluminum housing
- Unobtrusive, easy-to-clean high-temperature glass-ceramic top
- Four standard set temperatures with an option to add up to 11 temperature settings ranging from 80°F (27°C)–250°F (121°C)
- LED display
- Automatic pan detection allows for instant energy transmission to pan; almost no energy consumption when pan is not present
- Lock feature prevents unwanted setting changes
- Microprocessor monitors vital components to check for overheating, power supply issues, and more
- Standard Cat 5e or Cat 6 patch cable from unit to control box included
- Available in 100–120 VAC or 200–240 VAC, single phase
- Includes plug and cord (6 ft. nominal)
- One-year field-service warranty – U.S. and Canada

ACCESSORIES (NOT INCLUDED)

- Large Round Chafer, 6.9 qt, Glass Lid with 1/1 SS Insert (Part # 301311)
- Large Round Stainless Insert, 1/1 (Part # CT-103128)
- Large Round Stainless Insert Split Pan, 2/2 (Part # CT-103771)
- Large Round Porcelain Insert, 1/1 (Part # CT-103095)
- Large Round Porcelain Insert Split Pan, 2/2 (Part # CT-103096)
- Medium Round Chafer, 4.8 qt, Glass Lid with 1/1 SS Insert (Part # 301309)
- Medium Round Stainless Insert, 1/1 (Part # CT-103129)
- Medium Round Porcelain Insert 1/1 (Part # CT-103094)
- Serving Spoon Holder, Large or Medium (Part # CT-103097)

PERFORMANCE

The round CookTek® Silenzio™ buffet warmer features a low-wattage, whisper-quiet drop-in design with aluminum housing and a plain black glass-ceramic top. Each unit is programmed with an automatic pan detection feature to ensure maximum and efficient warming of any induction-compatible enamel cast ironware or traditional chafer.*



301311 (Large)
301309 (Medium)



CT-103128 (Large)
CT-103129 (Medium)



CT-103771 (Large)



CT-103095 (Large)
CT-103094 (Medium)



CT-103096 (Large)



CT-103097 (Large or Medium)



(CROSS-SECTION VIEW)

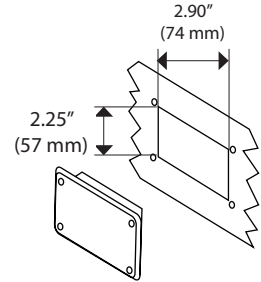
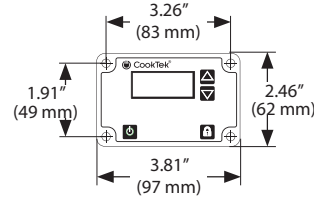
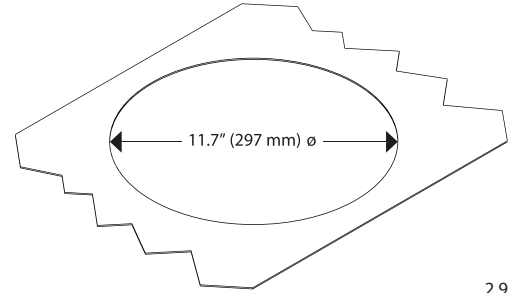
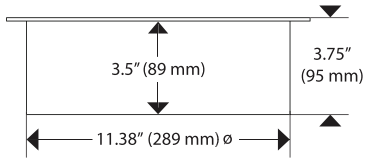
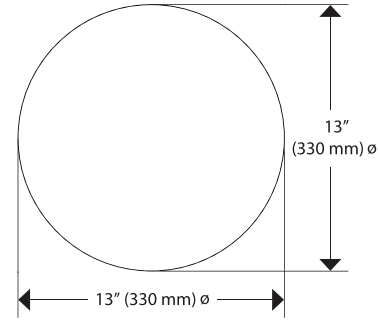
1. Chafing Dish
2. Silenzio™ Unit
3. Stone Countertop

CERTIFICATIONS



*Induction buffet units require the use of induction-compatible (i.e. magnetic) cookware.

It is the owner and installer's responsibility to comply with all local codes. CookTek reserves the right to make substitutions of components or change specifications without prior notice.



DIMENSIONS		
Full Unit Height	3.75"	95 mm
Housing Height	3.5"	89 mm
Full Unit Diameter	13" ϕ	330 mm ϕ
Housing Diameter	11.38" ϕ	289 mm
Cutout Diameter	11.7" ϕ	297 mm ϕ
Weight	8.4 lb.	3.8 kg
CLEARANCE		
Front	2"	51 mm
Sides	2"	51 mm
Rear	2"	51 mm
Below	6"	152 mm
Max Ambient Temperature*	122°F	50°C
SHIPPING INFORMATION		
Packaged Height	10"	254 mm
Packaged Width	20"	508 mm
Packaged Depth	20"	508 mm
Packaged Weight	13 lb.	5.9 kg
Item Class	250 NMFC #26710 HS code 8419.81	

ELECTRICAL SPECIFICATIONS (SINGLE PHASE)			
MODEL B651-RD			
UNITED STATES/ CANADA	659101	100-120 V, 50/60 Hz, 6 A, 100-650 W	NEMA 5-15P
MODEL B652-RD			
UNITED STATES/ CANADA	659201	200-240 V, 50/60 Hz, 4 A, 100-650 W	NEMA 6-20P
UK/ SAUDI ARABIA	659202	200-240 V, 50/60 Hz, 4 A, 100-650 W	BS1363, 13A, 230V
INTERNATIONAL	659203	200-240 V, 50/60 Hz, 4 A, 100-650 W	CEE 7/7 Schuko, 16A, 250V
AUSTRALIA	659204	200-240 V, 50/60 Hz, 4 A, 100-650 W	AS/NZS 3112:2000, 10A, 250V
SOUTH AFRICA	659207	200-240 V, 50/60 Hz, 4 A, 100-650 W	BS 546, 16A, 250V
ISRAEL	659208	200-240 V, 50/60 Hz, 4 A, 100-650 W	SI 32, 16A, 250V



NEMA 5-15P



AS/NZS 3112:2000,
10A, 250V



NEMA 6-20P



BS 546, 16A, 250V



BS1363, 13A, 230V



CEE 7/7 Schuko,
16A, 250V



SI 32, 16A, 250V

* Adequate cabinet ventilation should be provided for all drop-in models to prevent overheating of unit.

Global Operations

2801 Trade Center Drive / Carrollton, Texas 75007 USA
 US: 800.90TURBO (800.908.8726) / International: +1 214.379.6000
 Fax: +1 214.379.6073 / www.cooktek.com