

USER MANUAL

ICE CREAM DISPLAY FREEZERS



MODEL: SD34, SD46, SD54



USR Brands, Inc.

Phone: 800-764-1172 | www.usrestaurant.com | sales@usrestaurant.com

Dear Consumers:

Thank you very much for purchasing our products. In order to ensure your safety and achieve the best out of this freezer, please read this instruction carefully.

This appliance is not intended for use by persons (including children) with reduced physical, sensory or mental capabilities, or lack of experience and knowledge, unless they have been given supervision or instruction concerning use of the appliances by a person responsible for their safety. Children should be supervised to ensure that they do not play with the appliance.

Please read this user's manual thoroughly before using.

Keep this manual handy for further reference.

Details of Product

It uses quality, effective and hermetic compressor with broad range of starting voltage, suitable ambient temperature: not higher than 38°C /100°F, reasonable matching of the freezer system guarantees its powerful refrigerant ability and energy saving.

A good choice for storage and display of your variety of frozen food product with this crystal clear glass lids display freezer.

The locking glass lids protect your frozen food during off hours.

Caution for Using

1. Unpack all packages before using the freezer. Don't bend it over more than 60° while moving it.
2. The freezer should be installed in the environment of good ventilation, Cool and dry and without corrosive gas. It should not be installed close to heat sources or directly under the sunlight. The space more than 10cm between the wall of the front and the back of the freezer should be allowed. When installing, the wheels should be padded well so as to make the freezer be level and stable, or it will cause vibration and too much noise.
3. Never store flammable, explosive or corrosive products in the freezer, and keep the freezer away from such materials.
4. If power is cut off, wait at least 5 minutes before turning on again to avoid damage to the compressor.
5. To save energy, the door should not be frequently opened for a long time.
6. The surface and the inside of the freezer should be dry and clean. Long term moisture will cause the freezer rust slowly. (There will be some stains on the surface.)
7. Periodical cleaning is suggested for your reference. Generally, 30-45 days once is best. When cleaning, it is best to wipe the inside and the surface of the showcase with the soft cloth with neutral soap or detergent.
8. If the SUPPLY CORD is damaged, it must be replaced by the manufacturer, its service agent or similarly qualified person in order to avoid a hazard.

Attention: To ensure safety, the power plug must be pulled out before cleaning. All safety precautions must be followed. Dispose of properly in accordance with Federal or local regulations. Risk of fire or explosion due to puncture of refrigerant tubing. Follow handling instructions carefully.

DANGER: Risk of fire or explosion. Flammable refrigerant R290/R600a used. To be repaired only by trained service personnel. Do not use mechanical devices to defrost refrigerator. Do not puncture refrigerant tubing.

ATTENTION: pour assurer la sécurité, la fiche d'alimentation doit être retirée avant le nettoyage. Toutes les précautions de sécurité doivent être respectées. Disposer correctement conformément aux réglementations fédérales ou locales. Risque d'incendie ou d'explosion dû à la perforation du tube réfrigérant. Suivre la manutention instructions soigneusement.

Danger: risque d'incendie ou d'explosion. Réfrigérant inflammable R290/R600a utilisé. Être réparé uniquement par un technicien qualifié. N'utilisez pas de dispositifs mécaniques pour dégivrer le réfrigérateur. Ne pas perforer le tube réfrigérant.

How to Use

Allow to stand for a minimum of 4 hours before plugging in to the mains.

This freezer's temperature control is tamper-proof, preventing accidental adjustment and ensuring that the quality of your frozen treats won't be compromised. The temperature control can be adjusted easily with a screwdriver when necessary.

1. When initial operation, the freezer should run empty about one hour before storing food in it.
2. Before placing food into the freezer, adjust the temperature control to the lowest point (highest number) and let it run until the temperature of inner cabinet decreases to 0°Fahrenheit. Put the food in, and after 12 hours adjust the temperature control to the normal point.
3. The thermostat could adjust the temperature inside the freezer. When you turn the knob in clockwise. The bigger the figure, the lower the temperature. Generally, the position of "4" or "5" are suitable. At "Max" position, the compressor will run constantly to reach the coldest temperature as quickly as possible without stop (no cycle). Turn the temperature control to the "4" or "5" when temperature inside is stable for ice cream and similar products.

Indicator lights

“Power” indicates the freezer is switched on.

“Run” indicates the compressor is working.

Food Storage

Do not fill the freezer full of products. You should leave space between items and the inner surface of the cabinet, so as to keep good ventilation of cold air and freeze evenly. Do not put in any bottled or canned beverage with freezing point above the temperature in the cabinet when it is below zero.

For foods that should be moisture-free or lose water easily, wrap them up with hermetical food bags or fresh films before putting in the cabinet for the sake of avoiding smell-mixing and reducing frosting.

Storage of volatile and combustible gases, liquids such as strong alkalies, strong acids, petrol, etc. is forbidden.

Never put hot food directly in the freezer. Food should be cold or frozen before placing it inside.

The cabinet is intended exclusively for the storage and/or display of packaged foods only.

Maintenance

The freezer should be cleaned regularly. When cleaning, turn off the power, take out the foods in the cabinet, clean the inside using water or a little neutral detergent.

Do not use boiling water, acid, chemical diluent, petrol and oil, or dirt-removing powder.

Dry it after cleaning.

Use light soap water when cleaning the door seal, apply a little of talcum powder on it after natural drying to extend its service life.

Use soft cloth with water or a little detergent to clean the out surface. Note, keeping the power supply and lower part of connect wires away from water to avoid electricity leakage.

Except common breakdowns, those who are not service technician should not take apart and repair the freezer on their own so as to avoid worsening the trouble. Unauthorized repair of electrical part such as compressor, temperature controller is forbidden.

Defrosting

Defrost for better freezing efficiency when the frost film in the cabinet is 5mm/1/5" thick.

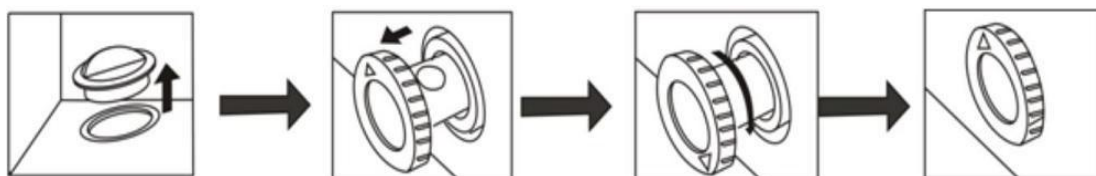
When defrosting, turn off the power, take out the frozen foods, open the door for warming and melting. Use soft cloth to absorb water and clean it up.

Extract the water conduit and put in a water container

Do not use sharp metal tools such as steel brush to clean the frost film when defrosting so as to avoid evaporator damage.

Never use hairdryers, electrical heaters or other such electrical appliances for defrosting.

When defrosting has finished drain the water in the bottom of the freezer by removing the cap, as illustrated below.



There is a water conduit at the bottom of the freezer, when defrosting, extract the rubber cover, the defrosted water will drip into the hole and flow out.

NOTES: PLEASE KEEP THE RUBBER COVER SAFE DURING THE DEFROSTING AND PUT IT BACK AFTER THE DEFROSTING IS COMPLETE

Trouble Shooting

Breakdown	Case	Removal method
The indicator is not on. The compressor does not start.	The plug isn't connected to the socket really.	Replug it.
	no power	Connect the socket with power.
The indicator is on, but the compressor doesn't work and buzzes only	The power voltage is < 98V.	Put a power-regulator more than 1000W power together.
The compressor stops a minute after start, and restart after a few minutes, and so repeatedly.	The power voltage is > 132V.	
The compressor works normally, but the temperature in the cabinet lowers too slowly.	The door is opened too frequently.	Reduce open times.
	The food in the cabinet is too much, and placed improperly.	Place foods properly keep place between them for ventilation of cold air.
	The frost film is too thick.	Take out foods and defrost.
	The surface of the condenser is too dirty.	Stop and clean the condenser.
	The door seals badly.	Adjust the door seal.
The noise is too loud	The freezer is placed unstably.	Place it stably.
	The fixing of the freezer is loose.	Tighten the fixing.
	there's contact between pipes.	Separate them.

The following are not faults:

When the freezer is working or after stopping for a while, the refrigerant in the pipes is cycling and gives out " running water " sounds.

The surface temperature of the compressor may be up 70~80°C/158 ~ 176°F when it is working.

The back side of step freezer gives out heat.

In rainy season, the outer surface of the cabinet may have dew, which makes no defects on normal use. Just dry it with a piece of cloth.