

Project:	Quantity:
Model #:	Approval:

For Commercial Use Only

LDC72 72" Refrigerated Flat Glass Meat Deli Case with Rear Storage



FEATURES

- 72" refrigerated staright glass deli case
- Foamed with CFC-free polyurethane insulation
- Rear sliding tempered glass door allows easy access
- Tempered front staright glass
- Rear refrigerated storage underneath: 67.6"L x 13.6"D
- 18" deep shelf on top of canopy
- 7.2" deep SS304 rear work surface
- Bright interior LED lighting
- Easy to use digital controller
- 68.5" x 7.9" tempered glass inside removable shelf (non-refrigerated)
- Glass shelf temperature not suitable for meat display
- Pre-installed low-profile casters, 2 leveling feet
- Uses eco-friendly R290 refrigerant
- Standard 110V plug and play

USR Brands is a US supplier of premium quality commercial cooking, refrigeration and food preparation equipment. Our aim is simple. Produce industry-leading commercial restaurant equipment at reasonable prices, and back it all up with an easy to understand, no nonsense warranty that people can count on.

TECHNICAL DATA

DIMENSIONS

Exterior Dimensions	70.9"L x 33.5"D x 47.2"H
Display Area	10 sq.ft
Rear Storage Capacity	4.3 cu.ft (67.7"L x 13.6"D)
Packaging Dimensions	75.6"L x 38.7"D x 50.3"H
Unit Weight	410 lb.
Shipping Weight	490 lb.

ELECTRICAL

Voltage	115
Hertz	60
Phase	1
Amps	11.2
Plug Type	NEMA 5-15P
Power Cord Length	79"

COOLING

Temperature Range	33°F to 40°F
Refrigerant	R290
Max. Ambient Temp	77°F
Defrosting	Automatic
Temperature Controller	Digital
Horsepower	1/2 HP

CONSTRUCTION

Exterior Material	Pre-painted Steel
Interior Material	Pre-painted Steel
Shelf Quantity	1
Shelf Material	Glass
Shelf Size	68.5" x 7.9" x 0.5"
Interior Light	L.E.D

TECHNICAL DRAWING

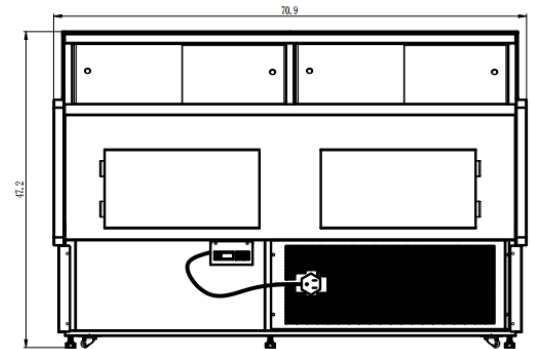
MODEL: **LDC72**

MFR ITEM #:

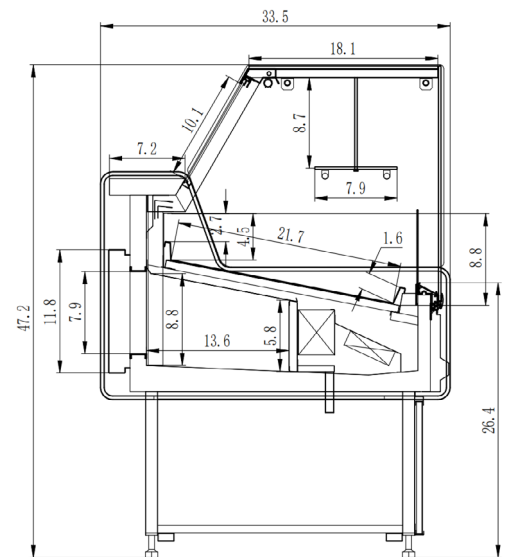


NEMA 5-15P

BACK VIEW



SIDE VIEW



TOP VIEW

