

Coldline LDC72-RM 72" Flat Straight Glass Meat Deli Case for Remote Condensing



FEATURES

- 72" straight glass deli case for remote condensing
- Foamed with CFC-free polyurethane insulation
- Rear sliding tempered glass door
- Tempered front straight glass
- Rear storage underneath: 67.6"L x 13.6"D
- 18" deep shelf on top of canopy
- 7.2" deep SS304 rear work surface
- Bright interior LED lighting
- 68.5" x 7.9" tempered glass inside removable shelf
- Pre-installed low-profile casters, 2 leveling feet
- Standard 110V plug and play

USR Brands is a US supplier of premium quality commercial cooking, refrigeration and food preparation equipment. Our aim is simple. Produce industry-leading commercial restaurant equipment at reasonable prices, and back it all up with an easy to understand, no nonsense warranty that people can count on.

TECHNICAL DATA

DIMENSIONS

Exterior Dimensions	70.9"L x 33.5"D x 47.2"H
Display Area	10 sq.ft
Rear Storage Capacity	4.3 cu.ft (67.7"L x 13.6"D)
Packaging Dimensions	75.6"L x 38.7"D x 50.3"H
Unit Weight	390 lb.
Shipping Weight	454 lb.

ELECTRICAL

Voltage	115
Hertz	60
Phase	1
Amps	0.5A
Plug Type	NEMA 5-15P
Power Cord Length	79"

CONSTRUCTION

Exterior Material	Pre-painted Steel
Interior Material	Pre-painted Steel
Shelf Quantity	1
Shelf Material	Glass
Shelf Size	68.5" x 7.9" x 0.5"
Interior Light	L.E.D

TECHNICAL DRAWING

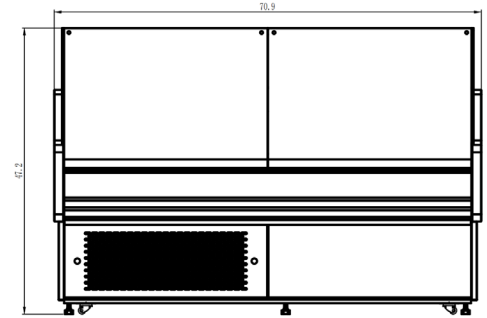
MODEL: **LDC72-RM**

MFR ITEM #:

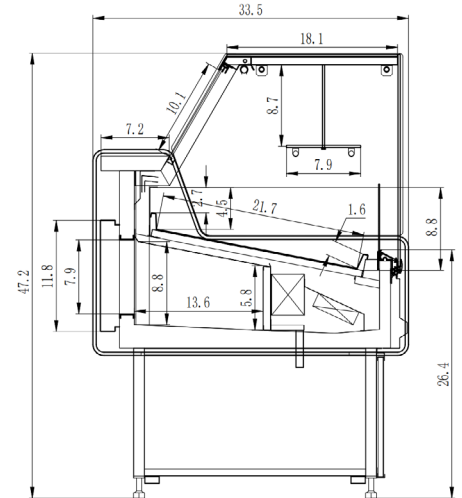


NEMA 5-15P

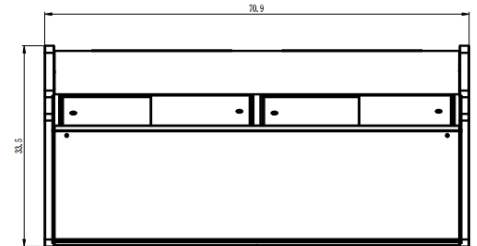
FRONT VIEW



SIDE VIEW



TOP VIEW



BACK VIEW

