

LDC72-F 72" Refrigerated Flat Straight Glass Fish Display Case with Ice Bin and Drain



FEATURES

- 72" refrigerated straight glass fish/seafood case
- Foamed with CFC-free polyurethane insulation
- Rear sliding tempered glass door allows easy access
- Tempered front straight glass
- Built-in ice bin and drain for holding and displaying fish
- 4.3 Cu.Ft rear refrigerated storage underneath
- 18" deep shelf on top of canopy
- 7.2" deep SS304 rear work surface
- Bright interior LED lighting
- Easy to use digital controller
- 68.5" x 7.9" tempered glass inside removable shelf (non-refrigerated)
- Glass shelf temperature not suitable for fish or meat display
- Pre-installed low-profile casters, 2 leveling feet
- Uses eco-friendly R290 refrigerant

USR Brands is a US supplier of premium quality commercial cooking, refrigeration and food preparation equipment. Our aim is simple. Produce industry-leading commercial restaurant equipment at reasonable prices, and back it all up with an easy to understand, no nonsense warranty that people can count on.

Project:	Quantity:
Model #:	Approval:

For Commercial Use Only

TECHNICAL DATA

DIMENSIONS

Exterior Dimensions	70.9"L x 33.5"D x 47.2"H
Display Area	10 sq.ft
Rear Storage Capacity	4.3 cu.ft (67.7"L x 13.6"D)
Packaging Dimensions	75.6"L x 38.7"D x 50.3"H
Unit Weight	410 lb.
Shipping Weight	490 lb.

ELECTRICAL

Voltage	115
Hertz	60
Phase	1
Amps	11.2
Plug Type	NEMA 5-15P
Power Cord Length	79"

COOLING

Temperature Range	33°F to 40°F
Refrigerant	R290
Max. Ambient Temp	77°F
Defrosting	Automatic
Temperature Controller	Digital
Horsepower	1/2 HP

CONSTRUCTION

Exterior Material	Pre-painted Steel
Interior Material	Pre-painted Steel
Shelf Quantity	1
Shelf Material	Glass
Shelf Size	68.5" x 7.9" x 0.5"
Interior Light	L.E.D

TECHNICAL DRAWING

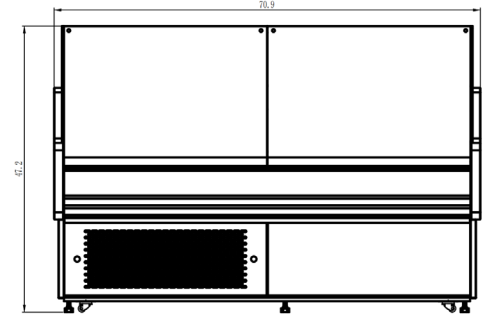
MODEL: **LDC72**

MFR ITEM #:

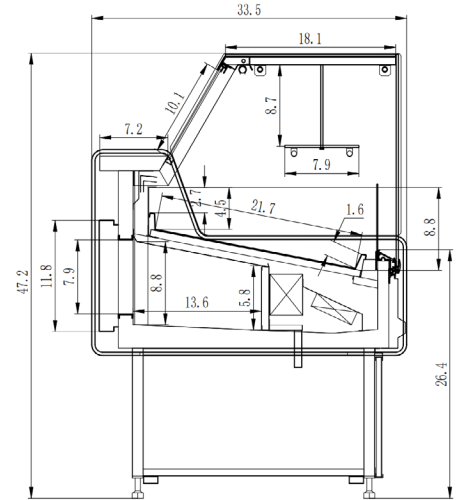


NEMA 5-15P

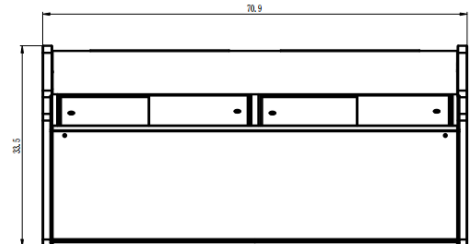
FRONT VIEW



SIDE VIEW



TOP VIEW



BACK VIEW

