



USER MANUAL

REFRIGERATED BEVERAGE DISPENSER



MODEL: CBD-1, CBD-2, CBD-3



USR Brands, Inc.

Phone: 800-764-1172 | www.usrestaurant.com | sales@usrestaurant.com

USRESTAURANT® RESERVES THE RIGHT TO CHANGE SPECIFICATIONS WITHOUT NOTICE

Introduction of cold juice dispenser

Thanks for you choosing and using CBD-1, CBD-2, CBD-3 refrigerated beverage dispenser. To ensure that you can use normally and effectively, we supply the introduction and ask you to pay attention to as follows:

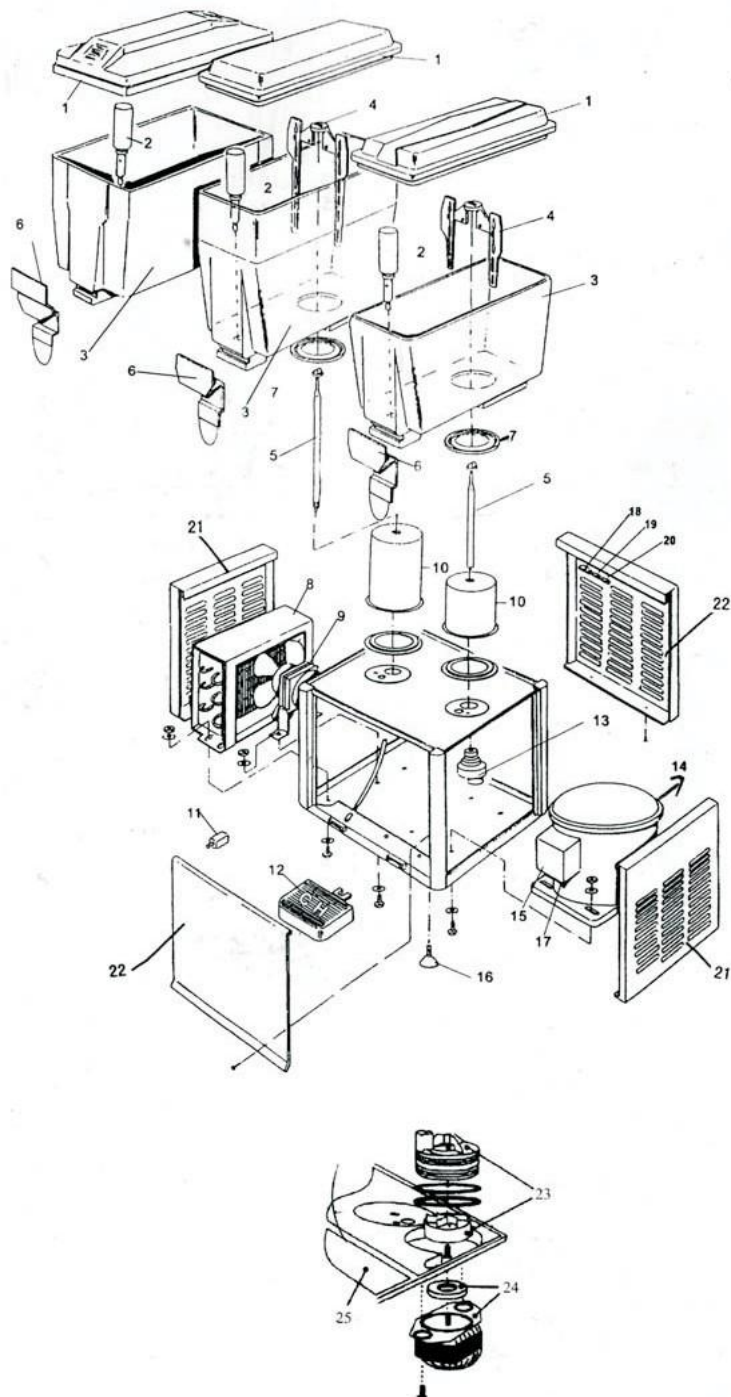
1. Before use the juice dispenser, please read the introduction first and master the operation methods.
2. Please use it according to the performance parameters defined on the voltage, power and the relative supply power cable.
3. Please pay attention to the directions for the materials, which will not influence the normal use.

To Protect the customers health, please wash the juice dispenser.

Purposes and features

The cold juice dispenser is manufactured by us based on absorbing the technologies from home and abroad . It can make the various beverage and juice to be delicious liquid cold drink. It is used widely in the restaurant, hotel, entertainment sites, cold drink house, and usually, it is popular in the common drink booths.

It has reasonable configuration, excellent performance, pretty appearance, and simple operation. The main parts are made of the stainless steel and innocuous plastics, It adopts automatically control the temperature to make cold drink, magnetization and the spewing fixture to make the even temperature and improve the refrigeration affections. Two containers or 3 containers juice dispenser can sell 2 or 3 different kinds of juice at the same time, which is an ideal appliance to consumers (1 juice dispenser, 2 purposes), and can be used all the year.



Installing Methods and Notices

1. To install it, please choose the site which is flat, fixable and can avoid the direct sunshine in summer.
2. Around the machine, should have 150mm up room to make the air circulating and make sure the Machine can run effectively.
3. Before installing it, please check the supply power whether confirms to the requirements or not. The power supply cable is not too thin or too long. The cross section of cable should be 1.5-2.5mm, voltage is mounted on the fixed position with fuse which will keep the users safety, it must have the reliable grounding. The socket should be mounted on the fixed position with fuse which will keep the machine running safety.
4. To make the fix position for machine, should make its front lower and back higher (to adjust the foot of the bottom can do it), then the water in the salver can flow into the box through the hose.

How to use the cold beverage machine

1. To fall the prepared beverage into the crock, the height of it should not exceed the standard height, otherwise, the beverage will flow into the churn-dasher from the dasher tube, which will make the dasher burn.
2. The temperature of the beverage should not too high, otherwise, it will make a bad affection for refrigeration.
3. Plug in the supply power to the 3 holes socket, the grounding hole should connect with the protectable wire or fixture to ensure the safety.
4. To turn the switch on the position of refrigeration, press down the refrigeration switch, the compressor fan starts running and refrigeration system starts working. Then start the dasher to mix or start the spewing switch to spew.
5. When the beverage become to the suitable temperature, please make the cup against the push board lightly, the beverage will flow into the cup from the outlet mouth.
6. When the temperature reduces to the certain degree, the refrigerator will stop running because of the influence from the temperature controller. And when it increases, it will start automatically again.
7. It should restart after after 5 minutes if it turn off suddenly or stop temporarily, otherwise, it will damage the compressor.

Trouble Shooting

Troubles	Causes	Repair methods
Compressor stops working	<ol style="list-style-type: none"> 1. The supply power off or not connected. 2. Switch damaged 3. Circuit trouble. 4. Overload and the protector broken. 	<ol style="list-style-type: none"> 1. Check the supply power and socket 2. Replace the switch. 3. check and repair 4. check and replace
Compressor runs but no refrigeration	<ol style="list-style-type: none"> 1. Capillary stop 2. The refrigeration fluid leaked 3. The electrical fan broken 	<ol style="list-style-type: none"> 1. Replace the capillary or dry the filter 2. Check the systems and add the refrigerant. 3. Replace the electrical machine
Winnowing water abnormally	<ol style="list-style-type: none"> 1. differences in the pump inside 2. Impeller and holes damaged. 3. Circuit damaged 4. Big clearance between the impeller and crock 	<ol style="list-style-type: none"> 1. clean 2. Replace the impeller and pump 3. check and repair 4. Adjust the clearance
Crock leaking	Sealing ring old or installed badly	Replace or re-install
Valve leaking	Sealing ring old or installed badly	Replace or re-install

Spare parts

NO.1-22 for mixing type

NO.23-25 for spraying type.

NO .	Name of Spare parts	NO.	Name of Spare parts
1	Lid	14	Compressor
2	Stainless steel valve	15	Overloading protect setting
3	Crock	16	Bottom of screw drive
4	Mixing leaf	17	Power switch
5	Mixing pole	18	Refrigeration switch
6	handle	19	Mixing switch
7	Airproof circle	20	Mixing switch
8	Condensation setting	21	Left and right plank
9	Electric fan	22	Front and back plank
10	Evaporator setting	23	Magnet
11	Automatic temperature controller	24	Spray motor
12	Meeting dish	25	Stainless Steel plate
13	Mixing setting		