

Height: 33.4" Width: 10.5" Depth: 27.3"
(84.8cm) (26.7cm) (69.3cm)



- Two Segment Graphic Door makes graphics changes easy. Includes variety- pack of eight displays: Apple Juice; Cranberry Juice; Grape Juice; Lemonade; Orange Juice; Pineapple Juice; Prune Juice; Iced Tea
- Patented High Intensity Mixing System delivers consistent quality beverages in the cup - cup after cup, from the top of the cup to the bottom of the cup
- Quick dispense with 1.0 to 1.5oz (29.6 to 44.4mL) per second flow rate
- 7" (17.8cm) cup clearance accommodates most juice containers
- Both push and hold dispense and optional single size portion control dispense available in the same dispenser
- With Cold Water dispense feature
- One dispenser delivers both frozen and ambient concentrate products to maximize profitability by providing greater flexibility in product offerings
- Service friendly design makes set up and maintenance simple
- Burst Capacity: At rate of one 12 oz drink/min, 70 drinks before exceeding 41°F (75°F ambient and 75°F incoming water temp)
- LED lighted door graphics bring high visibility to front-of-house applications

Agency:



Specifications

Product #: 37900.0076

Flavors: 2 Flavors

Water Access: Plumbed

Door: Lit

Refrigerant: R134A

Ice Bank: 8.00 lbs (3.629 kgs)

Dispense: Push Button

Legs: 4" Black Legs

Additional Features

Air Filter Included

Cold Water Dispense

See Spec Sheet for Capacities

Cold Water Button

Electrical & Capacity

Volts*	Amps	Watts	Cord Attached	Plug Type	8oz cups/hr 236ml cups/hr	Input H ₂ O Temp.	Phase	# Wires plus Ground	Hertz
120	4.5	540	Yes	NEMA 5-15P	-	60°F (15.5°C)	1	2	60

*When a BUNN is machine rated 120/208-240V, 120/208V or 120/240V, the higher voltage is the supply voltage needed to power the machine. The 120V is there to supply power to some components rated 120V in the machine, but it is not the supply voltage and would not power the machine if the machine is marked with the before mentioned ratings.

Plumbing Requirements

PSI	kPa	Fitting Supplied	Water Flow Required (GPM)
20-100	138-689	3/8" Male Flare Fitting	-

CAD Drawings

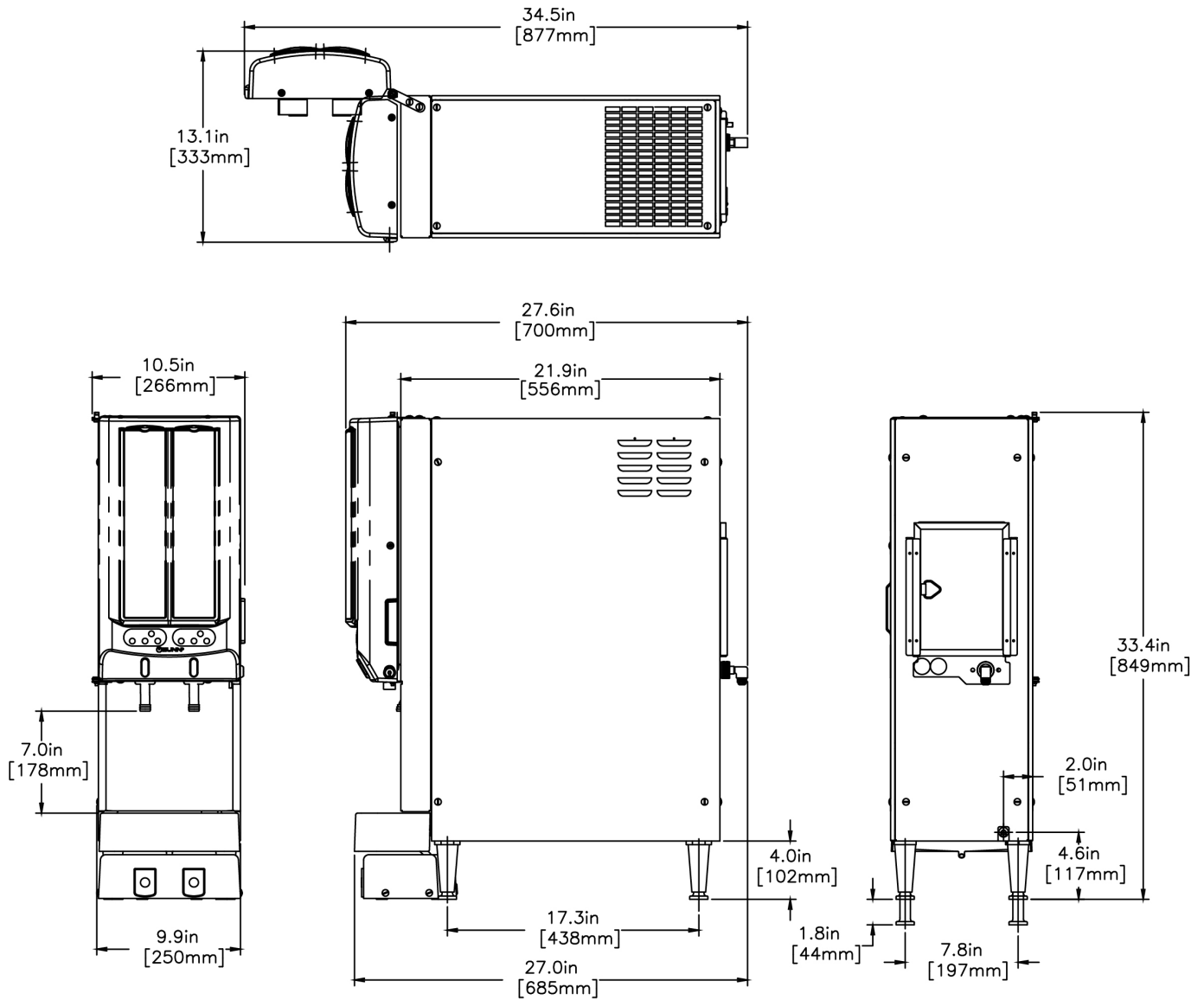
2D	Revit	KLC
●	●	●

WARNING: This product can expose you to chemicals including Bisphenol A (BPA), which is known to the State of California to cause birth defects or other reproductive harm. For more information go to www.P65Warnings.ca.gov



BUNN® reserves the right to change specifications and product design without notice. Such revisions do not entitle the buyer to corresponding changes, improvements, additions or replacements for previously purchased equipment. For most current specifications and other info visit bunn.com.

Last Updated:
05/04/2021



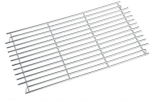
Unit			Shipping					
	Height	Width	Depth	Height	Width	Depth	Weight	Volume
English	33.4 in.	10.5 in.	27.3 in.	-	-	-	-	-
Metric	84.8 cm	26.7 cm	69.3 cm	-	-	-	-	-



BUNN® reserves the right to change specifications and product design without notice. Such revisions do not entitle the buyer to corresponding changes, improvements, additions or replacements for previously purchased equipment. For most current specifications and other info visit bunn.com.

Last Updated:
05/04/2021

Related Products & Accessories:(37900.0076)



WIRE GRILL,DRIP TRAY
(SINGLE)

Product #: 26801.0000

KIT, AMBIENT CONC
CVRSN JDF-4

Product #: 33699.0001



CONTAINER ASSY,
REFILLABLE

Product #: 39302.0000

KIT, HOSE ASSY-PUMP
JDF-2S/4S

Product #: 39690.0000



TRAY ASSY, EXTENDED
DRIP

Product #: 44015.1000



KIT, TST 2 VALVE W/
WATER

Product #: 45536.1005

Serving & Holding Options: (37900.0076)

Serving and Holding selections are currently unavailable. Please contact your sales representative to find out more information.



BUNN® reserves the right to change specifications and product design without notice. Such revisions do not entitle the buyer to corresponding changes, improvements, additions or replacements for previously purchased equipment. For most current specifications and other info visit bunn.com.

Last Updated:
05/04/2021