

# JDF-2S 120V NON-LIT 2 SEG PB W/GRPHICS

33.4" x 27.6" x 10.5"  
(84.8cm x 70.1cm x 26.7cm)



- Two Segment Graphic Door makes graphics changes easy. Includes variety- pack of eight displays: Apple Juice; Cranberry Juice; Grape Juice; Lemonade; Orange Juice; Pineapple Juice; Prune Juice; Iced Tea
- Patented High Intensity Mixing System delivers consistent quality beverages in the cup - cup after cup, from the top of the cup to the bottom of the cup
- 7" (17.8cm) cup clearance accommodates most juice containers
- Both push and hold dispense and optional single size portion control dispense available in the same dispenser
- Quick dispense with 1.0 to 1.5oz (29.6 to 44.4ml) per second flow rate
- One dispenser delivers both frozen and ambient concentrate products to maximize profitability by providing greater flexibility in product offerings
- Service friendly design makes set up and maintenance simple
- Burst Capacity: At rate of one 12 oz drink/min, 70 drinks before exceeding 41°F (75°F ambient and 75°F incoming water temp)

Agency:



## Specifications

**Product #:** 37900.0061

**Flavors:** 2 Flavors

**Water Access:** Plumbed

**Finish:** Black

**Door:** Un-Lit

**Refrigerant:** R134A

**Ice Bank:** 8.00 lbs (3.629 kgs)

**Dispense:** Push Button

**Legs:** 4" Black Legs

## Additional Features

## Electrical & Capacity

| Volts | Amps | Watts | Cord Attached | Plug Type  | 8oz cups/hr<br>236ml cups/hr | Input H <sub>2</sub> O Temp. | Phase | # Wires plus Ground | Hertz |
|-------|------|-------|---------------|------------|------------------------------|------------------------------|-------|---------------------|-------|
| 120   | 4.5  | 540   | Yes           | NEMA 5-15P | -                            | 60°F (15.5°C)                | 1     | 2                   | 60    |

## Plumbing Requirements

| PSI    | kPa     | Fitting Supplied        | Water Flow Required (GPM) |
|--------|---------|-------------------------|---------------------------|
| 20-100 | 138-689 | 3/8" Male Flare Fitting | -                         |

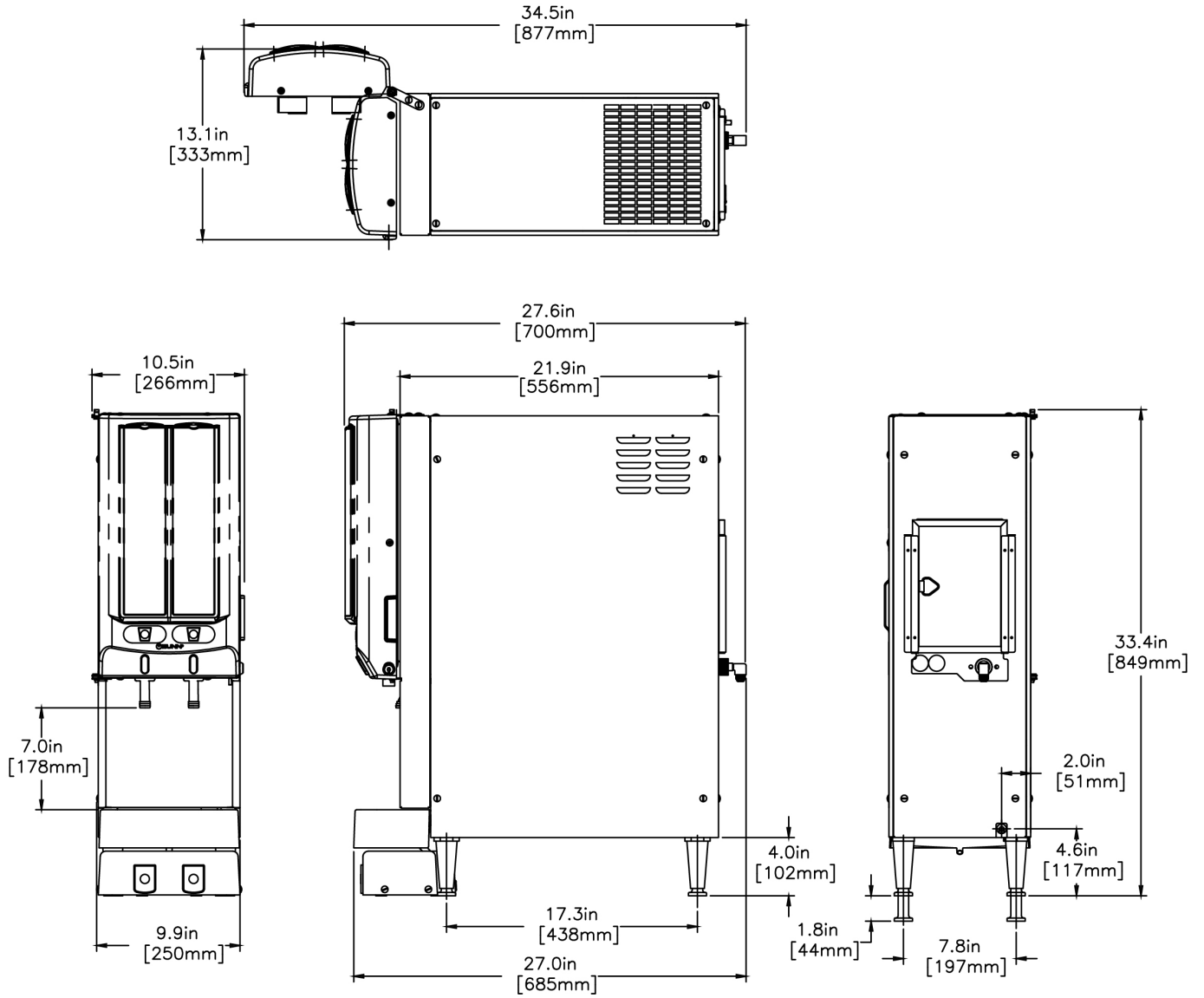
## CAD Drawings

| 2D | Revit | KLC |
|----|-------|-----|
| ●  |       |     |



BUNN® reserves the right to change specifications and product design without notice. Such revisions do not entitle the buyer to corresponding changes, improvements, additions or replacements for previously purchased equipment. For most current specifications and other info visit [bunn.com](http://bunn.com).

Created on:  
07/17/2018



|         | Unit     |          |          | Shipping     |              |              |             |            |
|---------|----------|----------|----------|--------------|--------------|--------------|-------------|------------|
|         | Width    | Height   | Depth    | Width        | Height       | Depth        | Weight      | Volume     |
| English | 10.5 in. | 33.4 in. | 27.6 in. | 30.5 in. in. | 44.0 in. in. | 22.8 in. in. | 110.000 lbs | 17.668 ft³ |
| Metric  | 26.7 cm  | 84.8 cm  | 70.1 cm  | 77.5 cm cm   | 111.8 cm cm  | 57.8 cm cm   | 49.896 kgs  | 0.500 m³   |



BUNN® reserves the right to change specifications and product design without notice. Such revisions do not entitle the buyer to corresponding changes, improvements, additions or replacements for previously purchased equipment. For most current specifications and other info visit [bunn.com](http://bunn.com).

Created on:  
07/17/2018

# Related Products & Accessories: JDF-2S 120V NON-LIT 2 SEG PB W/GRPHICS (37900.0061)



WIRE GRILL, DRIP TRAY  
(SINGLE)

Product #: 26801.0000

KIT, AMBIENT CONC  
CVRSN JDF-4

Product #: 33699.0001



WATER FILTER,  
EQHP-10

Product #: 39000.0004



CARTRIDGE,  
EQHP-10CRTG

Product #: 39000.1004



CONTAINER ASSY,  
REFILLABLE

Product #: 39302.0000

KIT, HOSE ASSY-PUMP  
JDF-2S/4S

Product #: 39690.0000



TRAY ASSY, EXTENDED  
DRIP

Product #: 44015.1000



BUNN® reserves the right to change specifications and product design without notice. Such revisions do not entitle the buyer to corresponding changes, improvements, additions or replacements for previously purchased equipment. For most current specifications and other info visit [bunn.com](http://bunn.com).

Created on:  
07/17/2018

# Serving & Holding Options: JDF-2S 120V NON-LIT 2 SEG PB W/GRPHICS(37900.0061)

\*Serving and Holding selections are currently unavailable. Please contact your sales representative to find out more information.\*



BUNN® reserves the right to change specifications and product design without notice. Such revisions do not entitle the buyer to corresponding changes, improvements, additions or replacements for previously purchased equipment. For most current specifications and other info visit [bunn.com](http://bunn.com).

Created on:  
07/17/2018