

PROJECT:	
MODEL #:	
ITEM #:	QTY:
AVAILABLE W/H:	APPROVAL:

Narrow Back Bar Coolers



BNB-48BT-HC



BNB-60BT-HC



BNB-72BT-HC

STANDARD FEATURES

Cabinet construction

- Stainless steel top with black vinyl coated steel walled exterior. Interior is galvanized steel with stainless steel floor.
- High density foamed in place polyurethane insulation – Environmentally safe.
- Two (2) adjustable shelves per section
- Interior height allows stacking of three "tall boy" beers
- 24" narrow depth

Refrigeration

- Hydrocarbon refrigerants (R-290) – increases energy efficiency by up to 25% compared to using HFC refrigerants. It is safer for the environment

and does not cause ozone depletion.

- Front breathing, side mounted compressor unit. Compressor configuration allows unit to be efficient in narrow spaces and be serviced without being moved.
- Epoxy coated evaporator reduces potential corrosion
- Innovative hot gas frame heating system reduces condensation and increases energy efficiency.
- Refrigerators have a temperature range between 33°F ~ 39°F
- Automatic defrosting

Doors

- Black recessed door handles

- Durable gasket with easy replacement.
- Standard door locks

Lighting

- Interior LED lighting

Standard

- NSF/ANSI Standard 7 compliant

Connection

- 9 ft long flexible three wire cord with molded plug

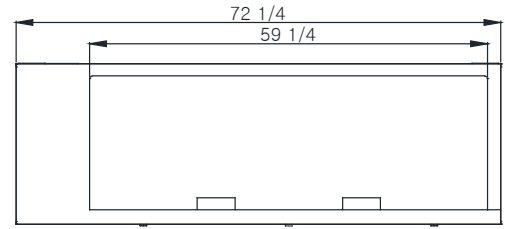
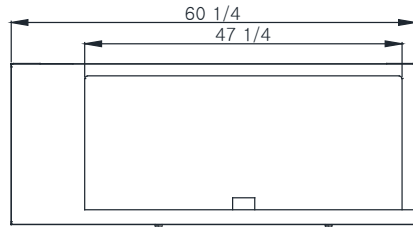
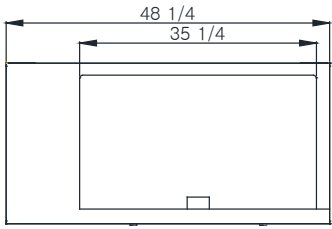
Optional Features & Accessories

- 6" legs available

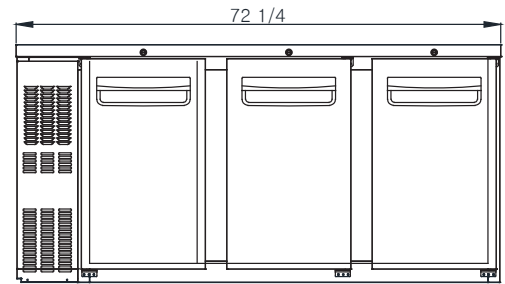
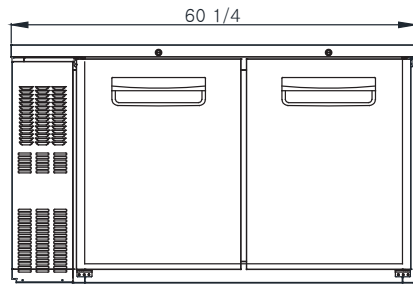
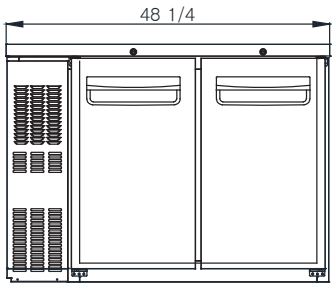
Narrow Back Bar Coolers

PRODUCT PLAN VIEW

- Top View -



- Front View -

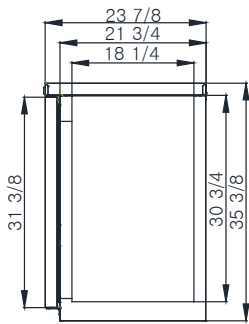


BNB-48BT-HC

BNB-60BT-HC

BNB-72BT-HC

- Side View -



PRODUCT SPECIFICATION

Narrow Back Bar Coolers

Model	Product Description				Refrigerant	Temperature Range	Easy Maintenance			Cord Length (ft/m)			
	Narrow Back Bar coolers				R-290	33°F ~ 39°F	Sliding Condensing Unit			9.8ft (3m)			
	Doors	Capacity (Cu.Ft.)	12 oz Cans	12 oz Bottles	Cabinet Dimensions (inches / mm)			HP	Voltage	Amps	NEMA config.	Weight (lbs / kg)	
L					D	H	Net Weight					Ship Weight	
BNB-48BT-HC	2	11.6	714	336	48 1/4" (1225mm)	23 7/8" (608mm)	35 3/8" (900mm)	3/8	115V / 60Hz	3.5	NEMA 5-15	168 (76)	181 (82)
BNB-60BT-HC	2	15.6	966	468	60 1/4" (1530mm)	23 7/8" (608mm)	35 3/8" (900mm)	3/8	115V / 60Hz	3.5	NEMA 5-15	212 (96)	231 (105)
BNB-72BT-HC	3	19.6	1218	588	72 1/4" (1835mm)	23 7/8" (608mm)	35 3/8" (900mm)	3/8	115V / 60Hz	3.5	NEMA 5-15	249 (113)	271 (123)

*BLUE AIR has the right to change specifications without further notice.

Blueair
FOOD SERVICE EQUIPMENT LLC

www.blueairfse.com
info@blueairfse.com
1.886.677.8500

223 W. Rosecrans Ave., CA 90248
T: 310.808.0102 F: 310.808.0242
9 W. Shelton Terrace #A, Hillside, NJ 07205
T: 310.808.0102 F: 310.808.0242