

PROJECT:	
MODEL #:	
ITEM #:	QTY:
AVAILABLE W/H:	APPROVAL:

Undercounter Refrigerator / Freezer

BLUR28-HC
BLUF28-HC



BLUR36-HC
BLUR48-HC
BLUR60-HC
BLUF36-HC
BLUF48-HC
BLUF60-HC



BLUR72-HC

STANDARD FEATURES

Cabinet construction

- Stainless steel cabinet construction
Stainless steel interior and exterior (galvanized steel back & bottom).
- Cyclopentane Insulation – Contains no hydro-fluorocarbons (HFCs) and is environmentally friendly
- Epoxy coated wire shelves with adjustable shelving height.
- 4 shelves per compartment
- Four (4) 4" diameter swivel casters with front brakes standard.

Refrigeration

- Hydrocarbon refrigerants (R-290) – increases energy efficiency by up to 25% compared to using HFC refrigerants. It is safer for the environment and does not cause ozone depletion.
- Self-contained system, rear mounted compressor.

- Electrodeposition coated evaporator increases performance by maintaining the heat transfer rates over the life of the evaporator and reducing potential corrosion.
- Innovative hot gas frame heating system reduces condensation and increases energy efficiency.
- Refrigerators have a temperature range between 33°F ~ 39°F
- Freezers hold a temperature range between -10°F and 0°F

Doors

- Self closing doors
- Durable door gasket with easy replacement.
- Lifetime guaranteed heavy duty all metal door handles. (Ni-Cr Plated)

Design

- Self-diagnostic digital temperature control & monitor system

- Digital display allows for easy monitoring
- Digital controls include automatic evaporator fan motor delay.
- Rounded corner design gives a stylish appearance and reduces chances of injury.
- Visual and audible door open alarm, alarm sounds when doors are not completely closed to protect against food spoilage

Standard

- NSF/ANSI Standard 7 compliant

Connection

- 9 ft long flexible three wire cord with molded plug

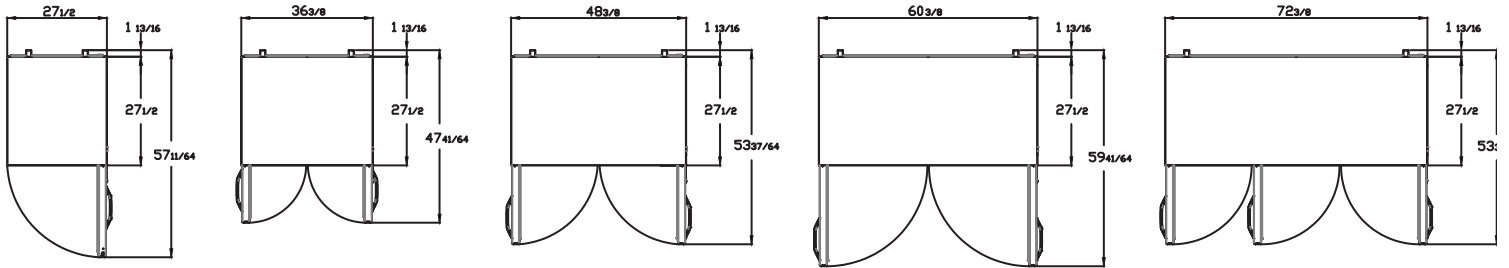
Optional Features & Accessories

- 2.5" diameter casters available
- 6" adjustable feet available
- Additional shelves are available.
- Back splash guard and drawer models available

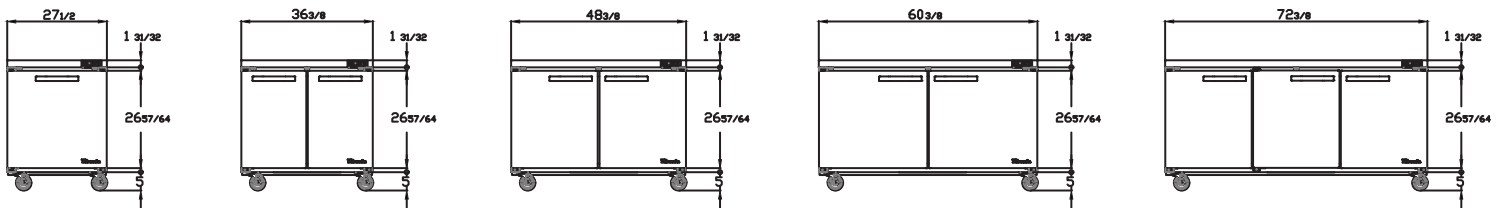
Undercounter Refrigerator / Freezer

PRODUCT PLAN VIEW

- Top View -



- Front View -



BLUR28-HC
BLUF28-HC

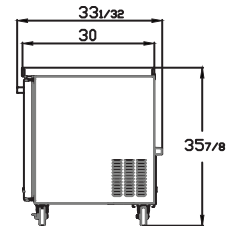
BLUR36-HC
BLUF36-HC

BLUR48-HC
BLUF48-HC

BLUR60-HC
BLUF60-HC

BLUR72-HC

- Side View -



PRODUCT SPECIFICATION

Refrigerators

Model	Product Description			Refrigerant	Temperature Range	Easy Maintenance			Cord Length (ft/m)			
	Undercounter Refrigerators			R-290	33°F ~ 39°F	Sliding Condensing Unit			9.8ft (3m)			
	Doors	Capacity (Cu.Ft.)	Shelves	Cabinet Dimensions (inches / mm)			HP	Voltage	Amps	NEMA config.	Weight (lbs / kg)	
				L	D	H					Net Weight	Ship Weight
BLUR28-HC	1	7	2	27 1/2" (699mm)	33 1/32" (839mm)	35 7/8" (912mm)	1/4+	115V / 60Hz	3.6	NEMA 5-15	139 (63)	172 (78)
BLUR36-HC	2	9.5	4	36 3/8" (923mm)	33 1/32" (839mm)	35 7/8" (912mm)	1/4+	115V / 60Hz	3.8	NEMA 5-15	163 (74)	203 (92)
BLUR48-HC	2	13.1	4	48 3/8" (1227mm)	33 1/32" (839mm)	35 7/8" (912mm)	1/4+	115V / 60Hz	3.9	NEMA 5-15	196 (89)	249 (113)
BLUR60-HC	2	16.7	4	60 3/8" (1533mm)	33 1/32" (839mm)	35 7/8" (912mm)	1/4+	115V / 60Hz	4.7	NEMA 5-15	225 (102)	282 (128)
BLUR72-HC	3	20.2	6	72 3/8" (1839mm)	33 1/32" (839mm)	35 7/8" (912mm)	1/4+	115V / 60Hz	5.2	NEMA 5-15	263 (119)	294 (134)

Freezer

Model	Product Description			Refrigerant	Temperature Range	Easy Maintenance			Cord Length (ft/m)			
	Undercounter Freezer			R-290	-10°F ~ 5°F	Sliding Condensing Unit			9.8ft (3m)			
	Doors	Capacity (Cu.Ft.)	Shelves	Cabinet Dimensions (inches / mm)			HP	Voltage	Amps	NEMA config.	Weight (lbs / kg)	
				L	D	H					Net Weight	Ship Weight
BLUF28-HC	1	7	2	27 1/2" (699mm)	33 1/32" (839mm)	35 7/8" (912mm)	1/4+	115V / 60Hz	3.2	NEMA 5-15	139 (63)	172 (78)
BLUF36-HC	2	9.5	4	36 3/8" (923mm)	33 1/32" (839mm)	35 7/8" (912mm)	1/2	115V / 60Hz	5.2	NEMA 5-15	172 (78)	212 (96)
BLUF48-HC	2	13.1	4	48 3/8" (1227mm)	33 1/32" (839mm)	35 7/8" (912mm)	1/2	115V / 60Hz	6	NEMA 5-15	205 (93)	258 (117)
BLUF60-HC	2	16.7	4	60 3/8" (1533mm)	33 1/32" (839mm)	35 7/8" (912mm)	1/2	115V / 60Hz	6.2	NEMA 5-15	238 (108)	295 (134)

*BLUE AIR has the right to change specifications without further notice.

Blueair
FOOD SERVICE EQUIPMENT LLC

www.blueairfse.com
info@blueairfse.com
1.866.677.8500

223 W. Rosecrans Ave., CA 90248
T: 310.808.0102 F: 310.808.0242
9 W. Shelton Terrace #A, Hillside, NJ 07205
T: 310.808.0102 F: 310.808.0242