



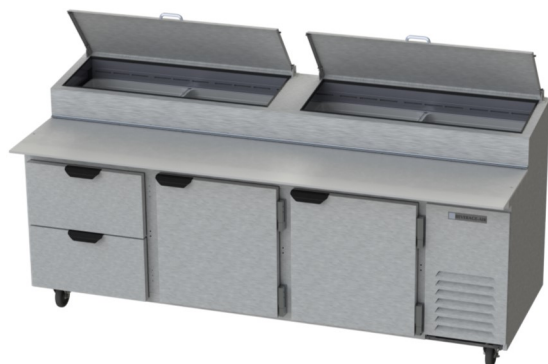
# BEVERAGE-AIR

Project: _____	AIA# _____
Item: _____	
Location: _____	SIS# _____
Approved: _____	

## DPD FOOD PREPERATION SERIES

### DPD93 Deli/Pizza Prep Table with Two Doors and Two Drawers

**MODELS:**  
**DPD93-2**



**DPD93-2**

**3 Year Parts/Labor Warranty**  
**Additional 2 Year Compressor Warranty**

#### CABINET CONSTRUCTION

- Stainless steel front, sides, top, doors, drawers and grille (*galvanized back & bottom*)
- Interior liner is made of corrosion resistant aluminum
- Aluminum interior liner prevents spill for falling into cabinet
- Stainless steel top
- Removable hoods & and insulated lid assemblies are made of matching stainless steel
- Full electronic control
- Doors and drawers are self-closing on cartridge style hinges
- Magnetic gaskets provide positive seal on both doors and drawers
- 120° Stay-open door feature
- Field reversible doors
- 3" Casters, 2 with brakes standard
- 19" Wide reversible cutting board is removable for easy cleaning
- Two (2) epoxy-coated steel wire shelves per door
- Units will accept pans up to 6" deep (pans are not included)
- Drawer frames are heavy duty stainless steel
- Telescoping slides, with locking mechanism to prevent drawers from being pulled off of cabinet
- Heavy duty pan dividers supports are standard
- Locking divider bars
- Raised rail maintains temperatures between 36° - 38°F

#### OPTIONS & ACCESSORIES

- ☐ Door models available
- ☐ Locks
- ☐ Bun tray rack
- ☐ Self dividers
- ☐ Lift off lid
- ☐ 6" Casters
- ☐ 6" Legs Black or Seismic / Flanged
- ☐ Food pedal door opener

#### REFRIGERATION SYSTEM

- Refrigeration system uses R134a refrigerant to comply with all environmental concerns
- Automatic, non-electric evaporator
- Epoxy coated evaporator coil

DPD93 Food Preparation : Deli/Pizza Prep Series



3779 Champion Blvd., Winston-Salem, NC 27105  
1-888-845-9800 Fax: 1-336-245-6453  
Beverage-Air.com sales@bevair.com



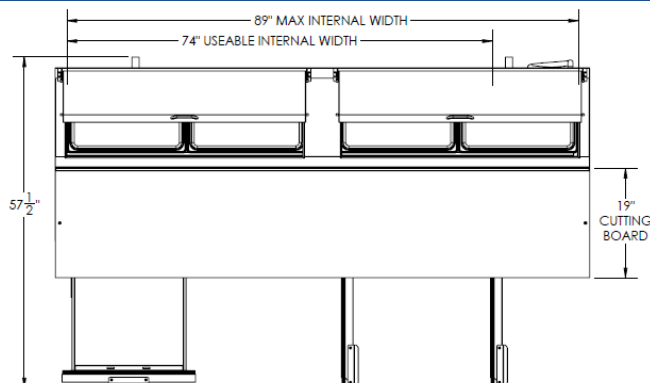
# BEVERAGE-AIR

MODEL	DPD93-2
<b>EXTERNAL DIMENSIONAL DATA</b>	
Width Overall	93"
Depth Overall with Handle & Cutting Board	38 3/8"
Height Overall with 3" Casters	55 1/2"
Number of Doors	2
Door Opening (in)	21 1/2" x 23 5/8"
Number of Drawers	2
Depth with Drawers Extended	57 1/2"
Drawers Opening (in)	21 5/8" x 10 3/8" 21 5/8" x 10 1/4"
Depth, Cutting Board	19"
<b>INTERNAL DIMENSIONAL DATA</b>	
NET Capacity (cubic ft.)	39.8
Internal Width Useable (in)	74"
Internal Depth Overall (in)	26"
Internal Height Overall (in)	25"
Number of Shelves	4
<b>ELECTRICAL DATA</b>	
Full Load Amperes 115/60/1	8.6
<b>REFRIGERATION DATA</b>	
Horsepower	1/3
<b>WEIGHT DATA</b>	
Gross Weight (Crated lbs)	600 lbs
Height - Crated	48"
Width - Crated	96"
Depth - Crated	40"

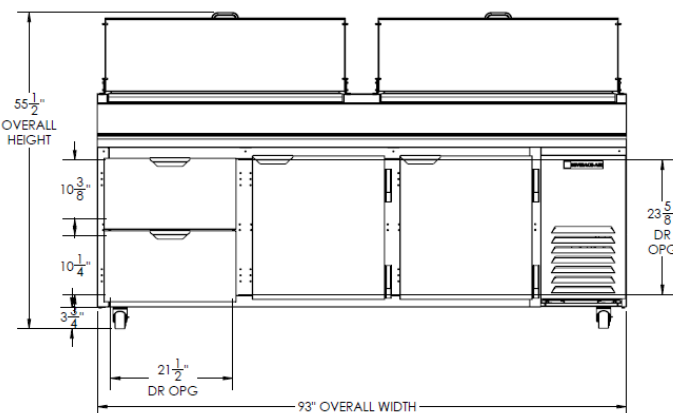
## Deli/Pizza Preparation Table

Models: DPD93-2

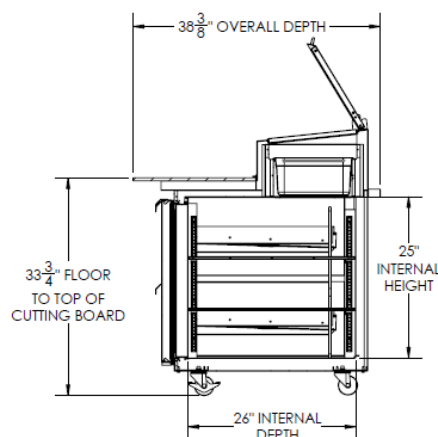
### Model Views



### Plan View



### Elevation View



### Side View

## ELECTRICAL CONNECTION

Units pre-wired at factory and include 8' long cord and plug set.



115/60/1  
NEMA-5-15P



an Ali Group Company



The Spirit of Excellence

3779 Champion Blvd., Winston-Salem, NC 27105  
1-888-845-9800 Fax: 1-336-245-6453  
Beverage-Air.com sales@bevair.com