

REV	DATE	DESCRIPTION	APPROVED
A	5-8-64	RELEASED TO PRODUCTION	H. HUGHES

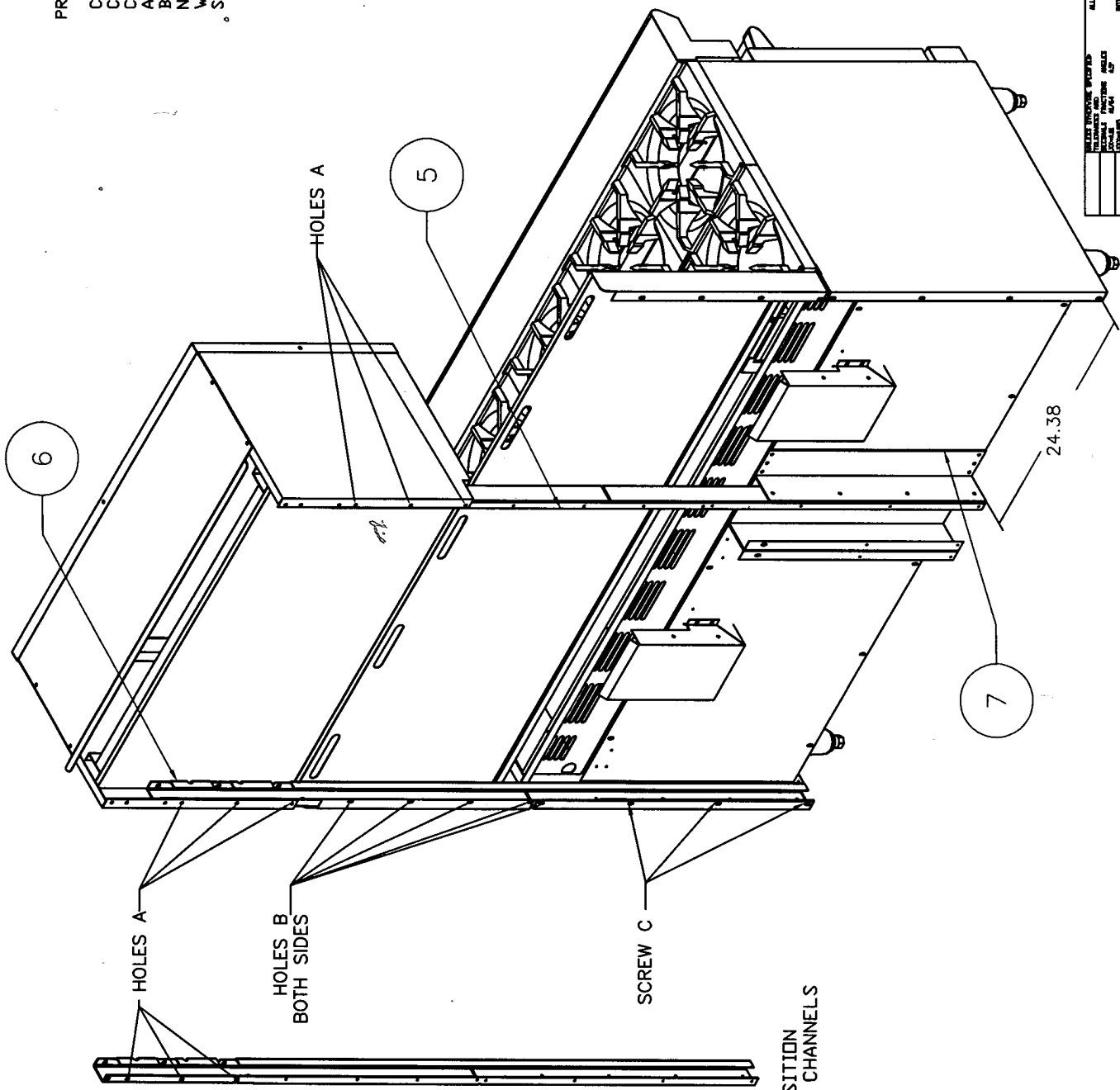
PROVIDED ITEMS:

CHEESE MELTER ARM OR SALAMANDER ARSM CHANNEL, ITEM #5, QTY 1.
 CHANNEL, ITEM #6, QTY 1.
 ANGLE, ITEM #7, QTY 1.
 BOLTS 1/4-20, QTY 6.
 NUTS 1/4-20, QTY 6.
 WASHER 1/4", QTY 6.
 SELF TAPPING SCREW #10, QTY 10

NOTES:

A. MOUNTING ON RIGHT SIDE

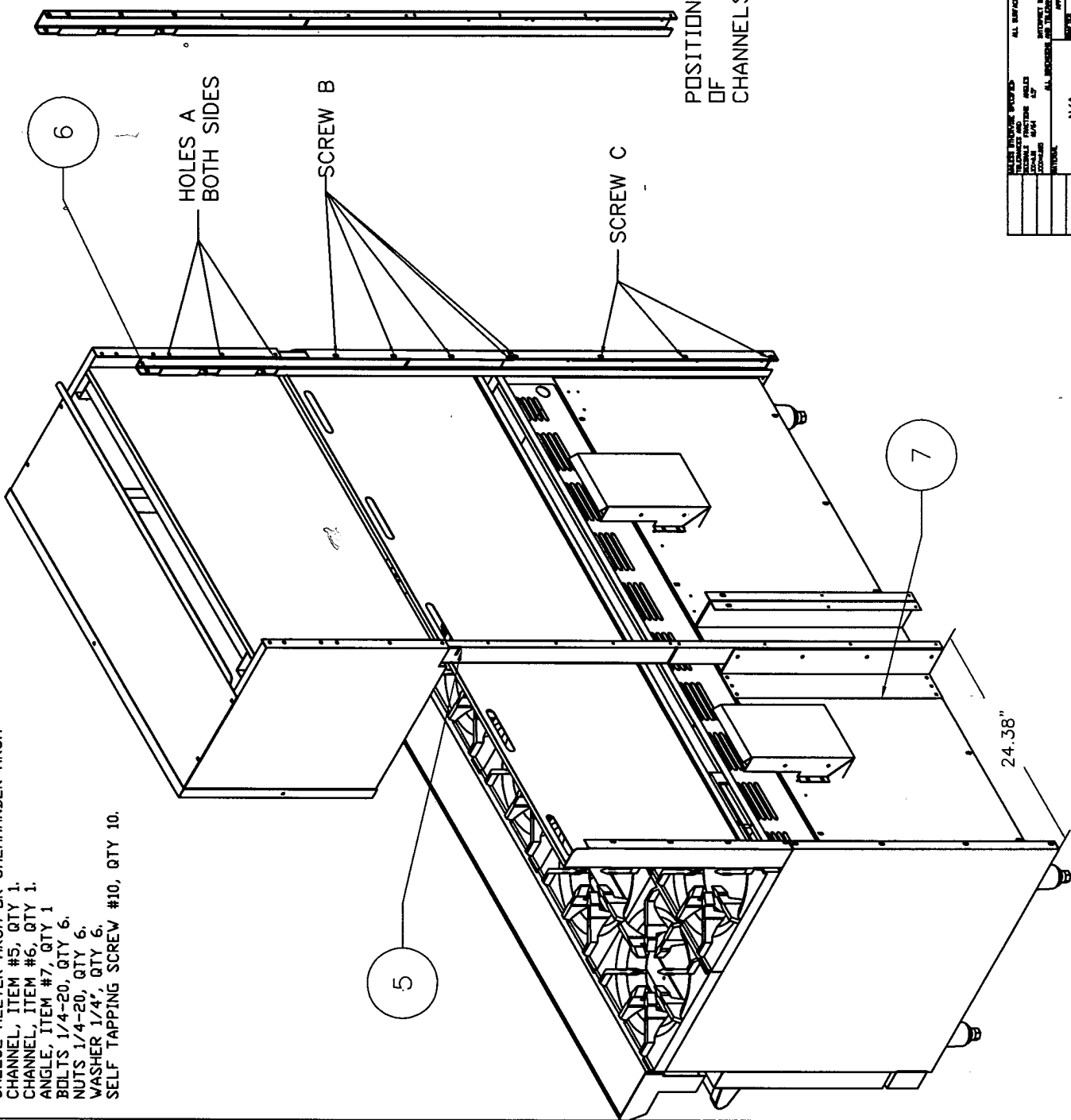
1. SLIDE CHANNEL (#6), IN PLACE OF PREVIOUS SHORTER CHANNEL. POSITION SO THAT CUTOUTS ARE ON TOP, AND HOLES ARE TOWARD BACK OF THE OVEN. THE 4 HOLES ON BOTTOM OF CHANNEL (#6) SHOULD BE ALIGNED WITH THE 4 HOLES ON THE SIDE PANEL. TIGHTEN THE CHANNEL WITH 3 SCREWS (C).
2. PLACE ANGLE (#7) AS SHOWN, USING ANGLE AS A TEMPLATE. SECURE WITH 6 #10 SELF-TAPPING SCREWS PROVIDED. SEE DIMENSION 24.38" FOR REFERENCE.
3. SECURE CHANNEL (#5) TO ANGLE (#7), BY ALIGNING THE 4 HOLES ON EACH OF THESE PARTS AND USING THE 4 SELF-TAPPING SCREWS TO TIGHTEN.
4. PLACE FRONT HIRISER ON THE CHANNELS (#4,#6). PLACE REAR HIRISER ON THE BACK OF FRONT HIRISER. SCREW WITH 10 SCREWS (B) AND TIGHTEN.
5. REAR HIRISER IS NOT SHOWN ON PAGE 2 IN ORDER TO SHOW PARTS THAT WOULD OTHERWISE BE COVERED.
6. SLIDE CHEESE MELTER OR SALAMANDER ONTO CHANNELS (#5,#6) AND TIGHTEN WITH BOLTS, 1/4-20 X1", WASHERS, AND NUTS, USING HOLES (A).
7. ALL SCREWS CAN BE REUSED.



ALL PARTS TO BE USED IN REPAIRS		AMERICAN RANGE CORP.	
ALL DIMENSIONS TO BE IN INCHES		13502 DASHWOOD ST. PACIFIC PALMS, CA 91051	
REV	DATE	REV	DATE
A	5-8-64	A	7/20/00
DESCRIPTION		DESCRIPTION	
INSTRUCTION CHEESE MELTER		OR SALAMANDER MOUNTING ON 60" OVEN	
DRAWN BY		CHECKED BY	
DESIGNED BY		APPROVED BY	
DATE		DATE	
SCALE		SCALE	
SHEET NO.		SHEET NO.	
TOTAL SHEETS		TOTAL SHEETS	
PROJECT		PROJECT	
CUSTOMER		CUSTOMER	
DRAWING NO.		DRAWING NO.	

PROVIDED ITEMS:

- CHEESE MELTER ARM OR SALAMANDER ARSM CHANNEL, ITEM #5, QTY 1.
- CHANNEL, ITEM #6, QTY 1.
- ANGLE, ITEM #7, QTY 1
- BOLTS 1/4-20, QTY 6.
- NUTS 1/4-20, QTY 6.
- WASHER 1/4", QTY 6.
- SELF TAPPING SCREW #10, QTY 10.



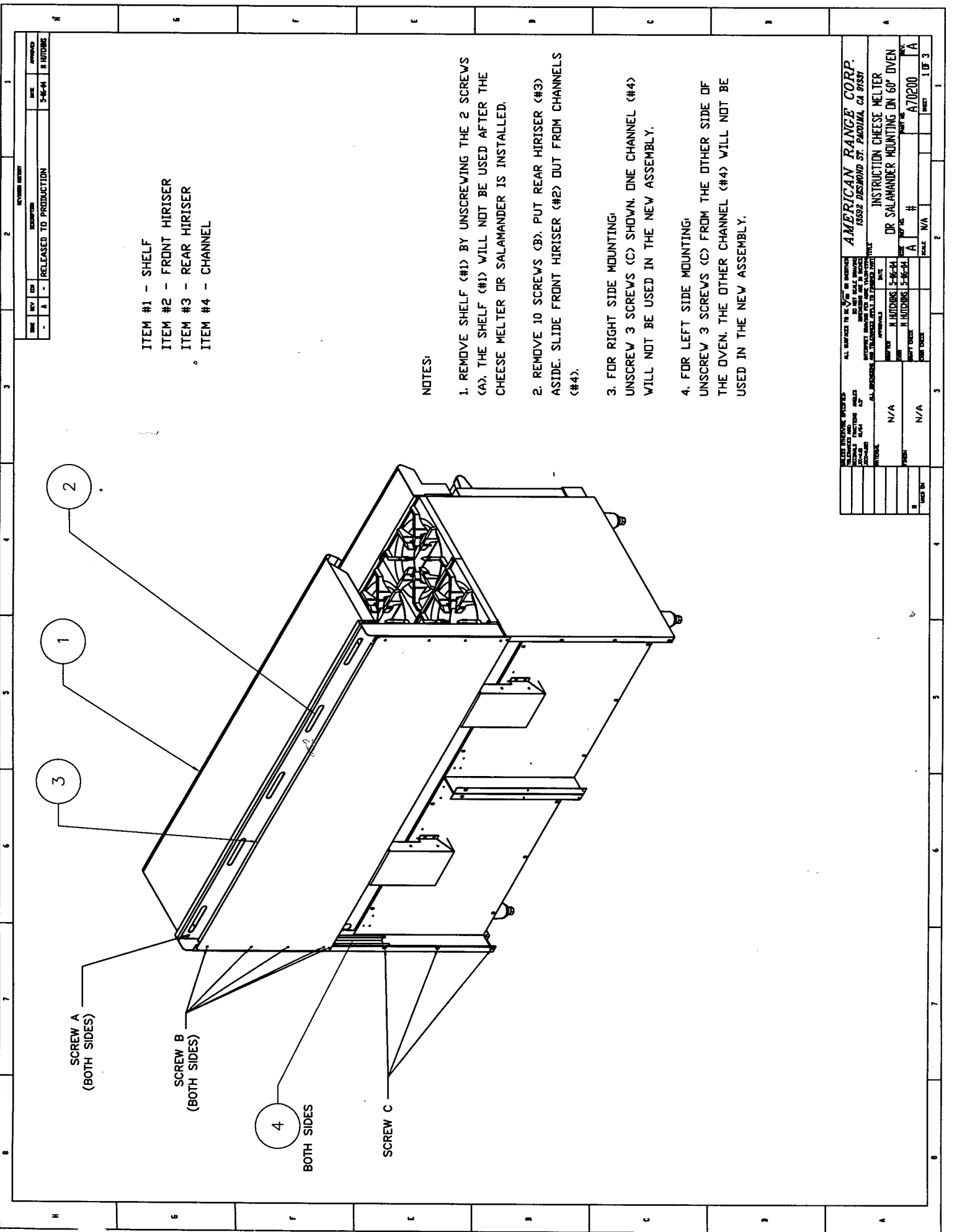
NOTES:

- A. MOUNTING ON LEFT SIDE
1. SLIDE CHANNEL (#6), IN PLACE OF PREVIOUS SHORTER CHANNEL. POSITION SO THAT CUTOUTS ARE ON TOP, AND HOLES ARE TOWARD BACK OF THE OVEN. THE 4 HOLES ON BOTTOM OF CHANNEL (#6) SHOULD BE ALIGNED WITH THE 4 HOLES ON THE SIDE PANEL. TIGHTEN THE CHANNEL WITH 3 SCREWS (C).
2. PLACE ANGLE (#7) AS SHOWN. USING ANGLE AS A TEMPLATE, SECURE WITH 6 #10 SELF-TAPPING SCREWS PROVIDED. SEE DIMENSION 24.38" FOR REFERENCE.
3. SECURE CHANNEL (#5) TO ANGLE (#7), BY ALIGNING THE 4 HOLES ON EACH OF THESE PARTS AND USING THE 4 SELF-TAPPING SCREWS TO TIGHTEN.
4. PLACE FRONT HIRISER ON THE CHANNELS (#4,#6). PLACE REAR HIRISER ON THE BACK OF FRONT HIRISER. SCREW WITH 10 SCREWS (B) AND TIGHTEN.
5. REAR HIRISER IS NOT SHOWN ON PAGE 2 IN ORDER TO SHOW PARTS THAT WOULD OTHERWISE BE COVERED.
6. SLIDE CHEESE MELTER OR SALAMANDER ONTO CHANNELS (#5,#6) AND TIGHTEN WITH BOLTS, 1/4-20 X1", WASHERS, AND NUTS, USING HOLES (A).
7. ALL SCREWS CAN BE REUSED.

DATE	REV	CDR	DESCRIPTION	DATE	APPROVED
-	A	-	RELEASED TO PRODUCTION	5-16-64	H HUTCHINS

ALL SURFACES TO BE FINISHED IN ACCORDANCE WITH THE SPECIFICATIONS OF THE CONTRACT DOCUMENTS AND THE AMERICAN SOCIETY OF MECHANICAL ENGINEERS (ASME) STANDARDS. ALL DIMENSIONS ARE TO UNLESS OTHERWISE SPECIFIED.	
ALL DIMENSIONS ARE TO UNLESS OTHERWISE SPECIFIED.	INSTRUCTION CHEESE MELTER OR SALAMANDER MOUNTING ON 60" OVEN
N/A	H HUTCHINS 5-16-64
N/A	H HUTCHINS 5-16-64
N/A	A70200
N/A	SHEET 3 OF 3

AMERICAN RANGE CORP.
 15508 DESMOND ST., PACIFICA, CA 91351



- ITEM #1 - SHELF
- ITEM #2 - FRONT HIRISER
- ITEM #3 - REAR HIRISER
- ITEM #4 - CHANNEL

NOTES:

1. REMOVE SHELF (#1) BY UNSCREWING THE 2 SCREWS (A). THE SHELF (#1) WILL NOT BE USED AFTER THE CHEESE MELTER OR SALAMANDER IS INSTALLED.
2. REMOVE 10 SCREWS (B). PUT REAR HIRISER (#3) ASIDE. SLIDE FRONT HIRISER (#2) OUT FROM CHANNELS (#4).
3. FOR RIGHT SIDE MOUNTING, UNSCREW 3 SCREWS (C) SHOWN. ONE CHANNEL (#4) WILL NOT BE USED IN THE NEW ASSEMBLY.
4. FOR LEFT SIDE MOUNTING, UNSCREW 3 SCREWS (C) FROM THE OTHER SIDE OF THE OVEN. THE OTHER CHANNEL (#4) WILL NOT BE USED IN THE NEW ASSEMBLY.

REV	DATE	DESCRIPTION	BY	APPROVED
A	5-26-74	RELEASED TO PRODUCTION		

ALL SURFACES TO BE PAINTED OR OILED TO PREVENT RUSTING ALL DIMENSIONS ARE TOLERANCES UNLESS OTHERWISE SPECIFIED		AMERICAN RANGE CORP. 15552 DEWBOND ST. PICOCA, CA 95571	
ALL DIMENSIONS ARE TOLERANCES UNLESS OTHERWISE SPECIFIED ALL DIMENSIONS ARE TOLERANCES UNLESS OTHERWISE SPECIFIED	ALL DIMENSIONS ARE TOLERANCES UNLESS OTHERWISE SPECIFIED ALL DIMENSIONS ARE TOLERANCES UNLESS OTHERWISE SPECIFIED	INSTRUCTION CHEESE MELTER OR SALAMANDER MOUNTING ON 60" OVEN	PART NO. A70200 SHEET 1 OF 3
DATE: 5-26-74 DRAWN BY: H. HITCHCOCK CHECKED BY: H. HITCHCOCK	DATE: 5-26-74 DRAWN BY: H. HITCHCOCK CHECKED BY: H. HITCHCOCK	SCALE: N/A UNIT: INCHES	DRAWN BY: H. HITCHCOCK CHECKED BY: H. HITCHCOCK